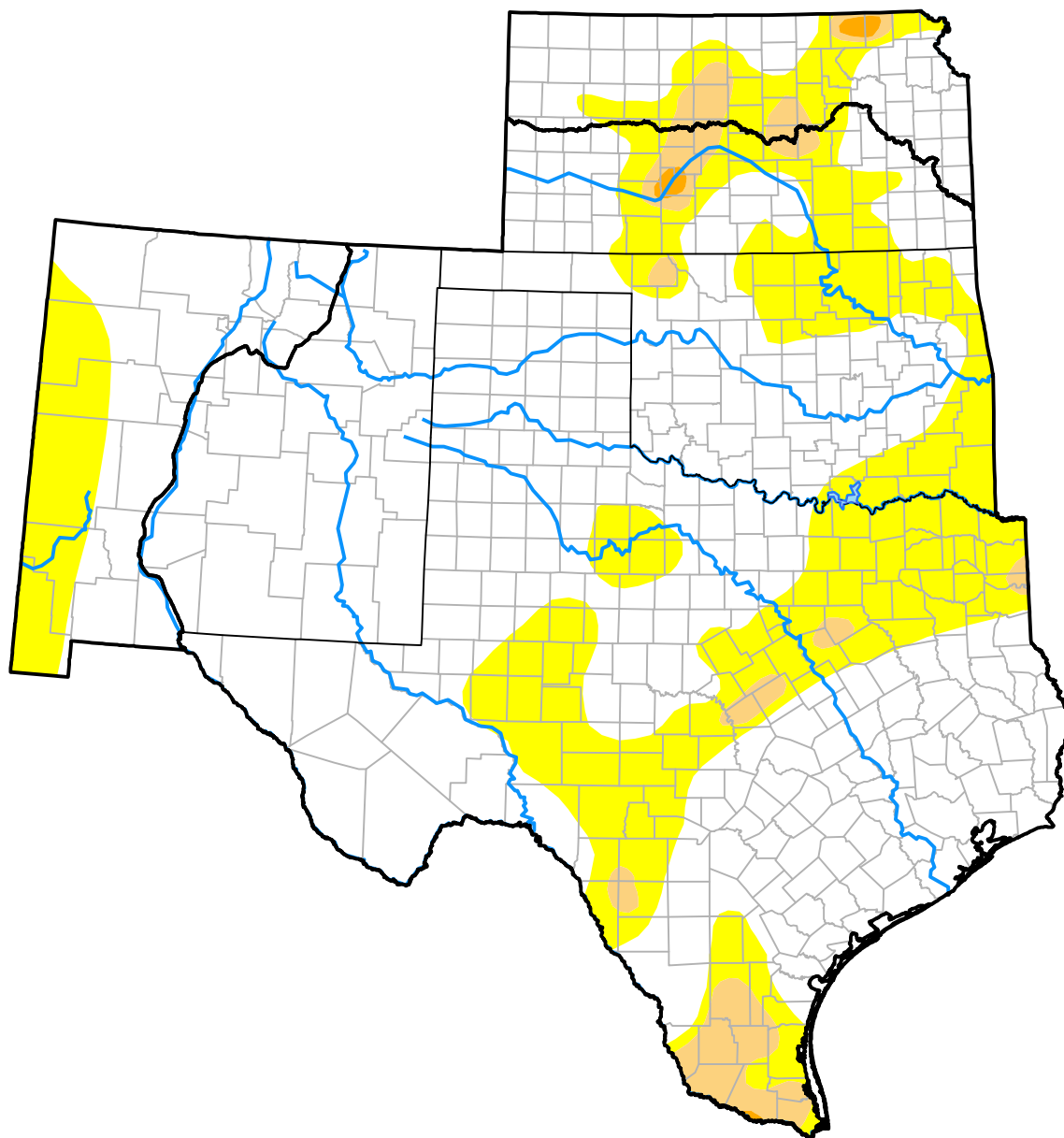


# U.S. Drought Monitor

## Southern Plains RDEWS

**September 26, 2017**  
*(Released Thursday, Sep. 28, 2017)*  
 Valid 8 a.m. EDT



*Drought Conditions (Percent Area)*

	None	D0-D4	D1-D4	D2-D4	D3-D4	D4
<b>Current</b>	73.50	26.50	2.54	0.02	0.00	0.00
<b>Last Week</b> <i>09-21-2017</i>	83.56	16.44	2.21	0.21	0.00	0.00
<b>3 Months Ago</b> <i>06-29-2017</i>	69.42	30.58	7.10	0.35	0.00	0.00
<b>Start of Calendar Year</b> <i>01-05-2017</i>	65.81	34.19	17.53	9.68	0.87	0.00
<b>Start of Water Year</b> <i>09-29-2016</i>	78.11	21.89	4.30	0.47	0.00	0.00
<b>One Year Ago</b> <i>09-29-2016</i>	78.11	21.89	4.30	0.47	0.00	0.00

### Intensity:

None	D2 Severe Drought
D0 Abnormally Dry	D3 Extreme Drought
D1 Moderate Drought	D4 Exceptional Drought

*The Drought Monitor focuses on broad-scale conditions. Local conditions may vary. For more information on the Drought Monitor, go to <https://droughtmonitor.unl.edu/About.aspx>*

### Author:

Brad Rippey  
 U.S. Department of Agriculture



**droughtmonitor.unl.edu**