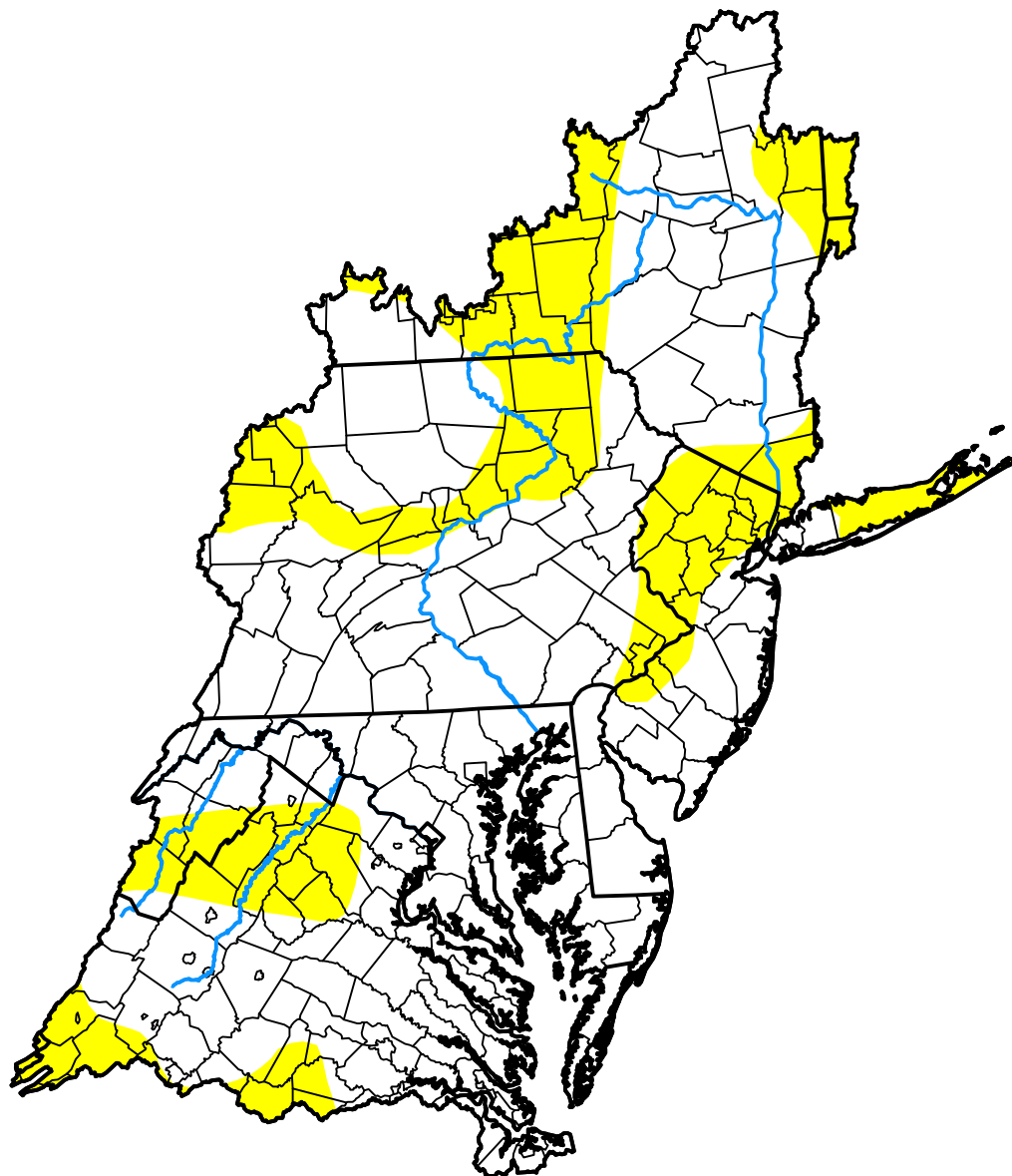


# U.S. Drought Monitor

## Mid Atlantic Watershed

**October 3, 2017**  
(Released Thursday, Oct. 5, 2017)  
Valid 8 a.m. EDT



### Intensity:



*The Drought Monitor focuses on broad-scale conditions. Local conditions may vary. For more information on the Drought Monitor, go to <https://droughtmonitor.unl.edu/About.aspx>*

### Author:

Anthony Artusa  
NOAA/NWS/NCEP/CPC



**droughtmonitor.unl.edu**