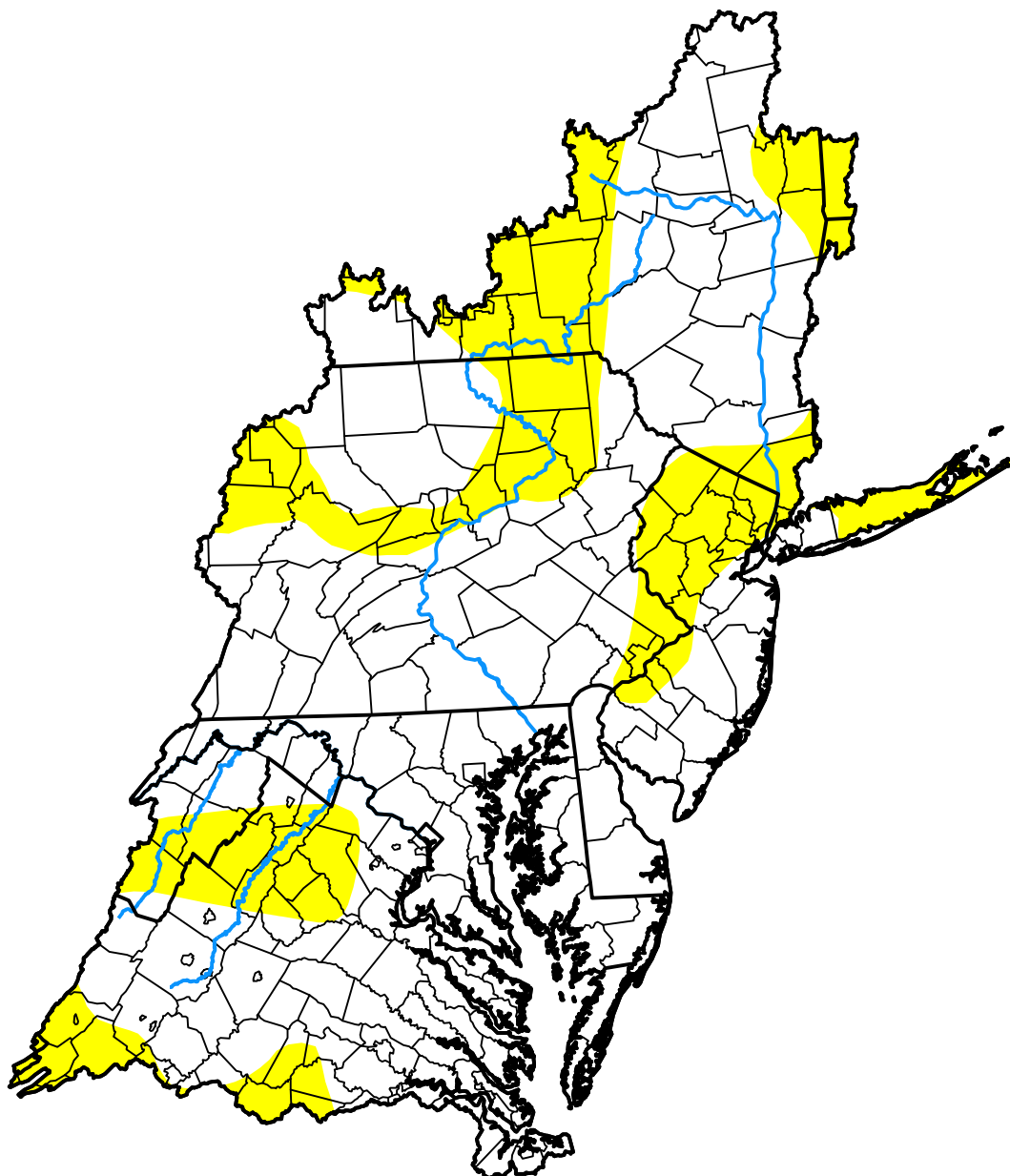


U.S. Drought Monitor

Mid Atlantic Watershed

October 3, 2017
 (Released Thursday, Oct. 5, 2017)
 Valid 8 a.m. EDT



Drought Conditions (Percent Area)

	None	D0-D4	D1-D4	D2-D4	D3-D4	D4
Current	73.69	26.31	0.00	0.00	0.00	0.00
Last Week <i>09-28-2017</i>	91.66	8.34	0.00	0.00	0.00	0.00
3 Months Ago <i>07-06-2017</i>	90.94	9.06	0.00	0.00	0.00	0.00
Start of Calendar Year <i>01-05-2017</i>	17.25	82.75	36.48	9.44	0.06	0.00
Start of Water Year <i>09-28-2017</i>	91.66	8.34	0.00	0.00	0.00	0.00
One Year Ago <i>10-06-2016</i>	56.48	43.52	23.92	7.89	0.31	0.00

Intensity:

None	D2 Severe Drought
D0 Abnormally Dry	D3 Extreme Drought
D1 Moderate Drought	D4 Exceptional Drought

The Drought Monitor focuses on broad-scale conditions. Local conditions may vary. For more information on the Drought Monitor, go to <https://droughtmonitor.unl.edu/About.aspx>

Author:

Anthony Artusa
 NOAA/NWS/NCEP/CPC



droughtmonitor.unl.edu