

# U.S. Drought Monitor

## Upper Colorado Watershed

October 10, 2017

(Released Thursday, Oct. 12, 2017)

Valid 8 a.m. EDT

### Drought Conditions (Percent Area)

	None	D0-D4	D1-D4	D2-D4	D3-D4	D4
<b>Current</b>	48.18	51.82	3.72	0.00	0.00	0.00
<b>Last Week</b> 10-05-2017	40.24	59.76	6.05	0.00	0.00	0.00
<b>3 Months Ago</b> 07-13-2017	48.80	51.20	2.70	0.00	0.00	0.00
<b>Start of Calendar Year</b> 01-05-2017	76.02	23.98	1.34	0.00	0.00	0.00
<b>Start of Water Year</b> 09-28-2017	39.10	60.90	6.75	0.00	0.00	0.00
<b>One Year Ago</b> 10-13-2016	69.91	30.09	4.13	0.04	0.00	0.00

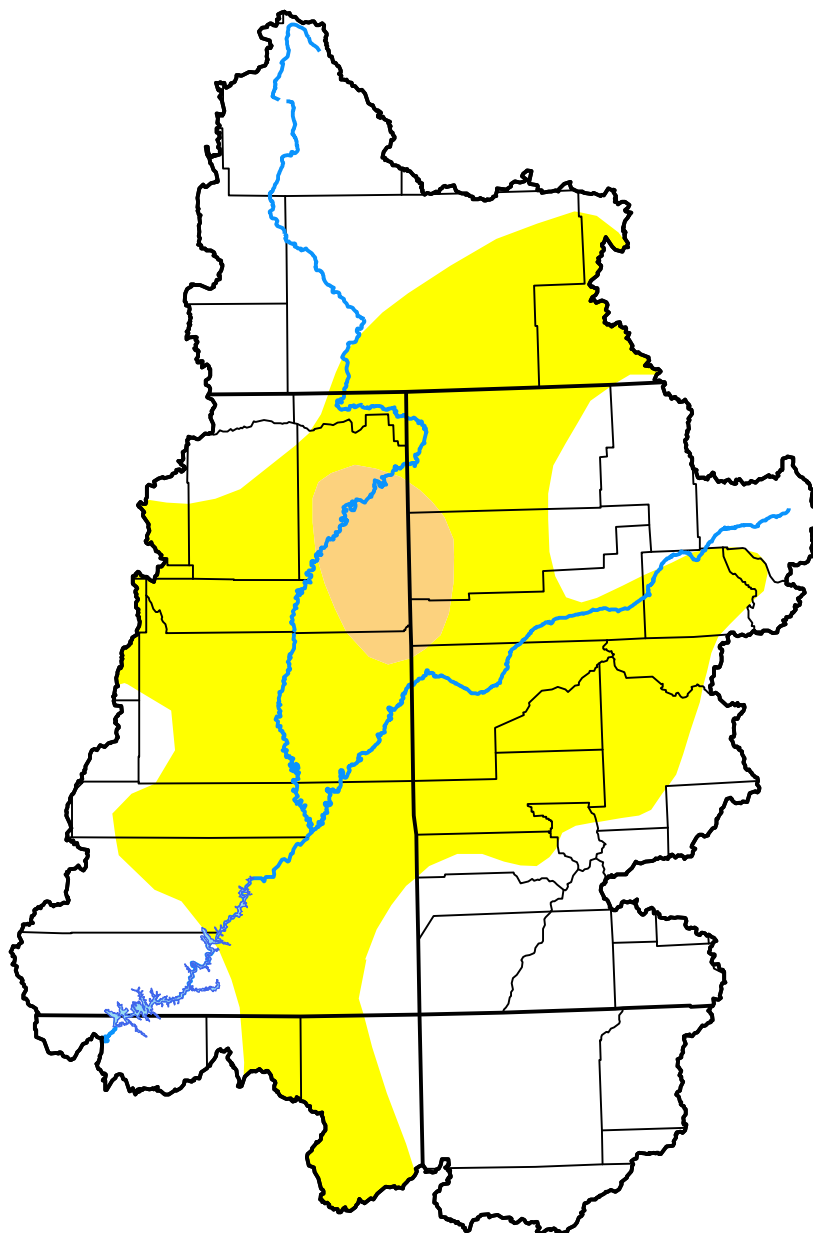
### Intensity:

 None	 D2 Severe Drought
 D0 Abnormally Dry	 D3 Extreme Drought
 D1 Moderate Drought	 D4 Exceptional Drought

The Drought Monitor focuses on broad-scale conditions. Local conditions may vary. For more information on the Drought Monitor, go to <https://droughtmonitor.unl.edu/About.aspx>

### Author:

Anthony Artusa  
NOAA/NWS/NCEP/CPC



[droughtmonitor.unl.edu](https://droughtmonitor.unl.edu)