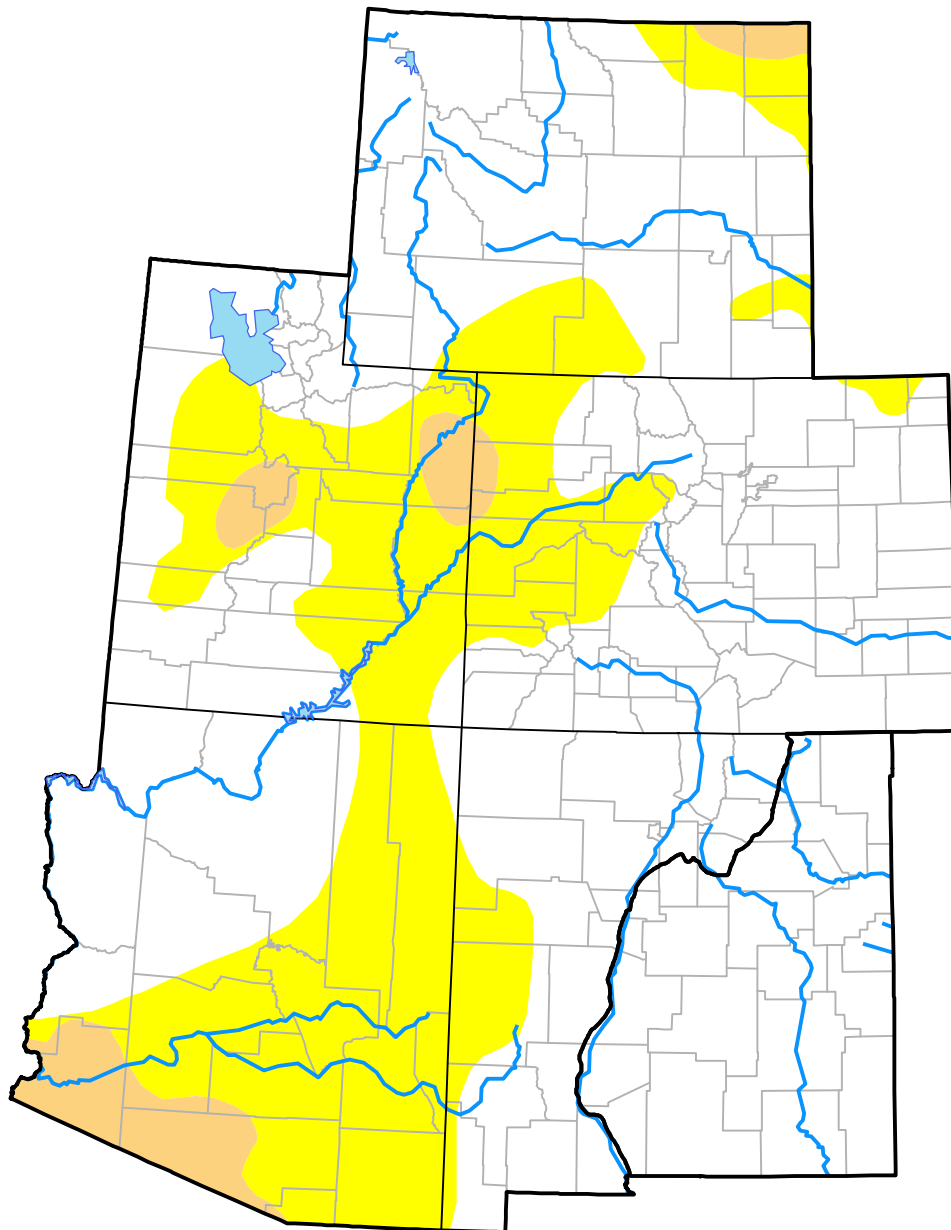


U.S. Drought Monitor

Intermountain West RDEWS

October 10, 2017
 (Released Thursday, Oct. 12, 2017)
 Valid 8 a.m. EDT



Drought Conditions (Percent Area)

	None	D0-D4	D1-D4	D2-D4	D3-D4	D4
Current	68.92	31.08	4.09	0.00	0.00	0.00
Last Week <i>10-05-2017</i>	65.41	34.59	4.59	0.00	0.00	0.00
3 Months Ago <i>07-13-2017</i>	61.88	38.12	9.58	0.27	0.00	0.00
Start of Calendar Year <i>01-05-2017</i>	49.44	50.56	18.89	1.51	0.00	0.00
Start of Water Year <i>09-28-2017</i>	66.55	33.45	4.74	0.00	0.00	0.00
One Year Ago <i>10-13-2016</i>	51.84	48.16	15.83	1.63	0.00	0.00

Intensity:

- None
- D0 Abnormally Dry
- D1 Moderate Drought
- D2 Severe Drought
- D3 Extreme Drought
- D4 Exceptional Drought

The Drought Monitor focuses on broad-scale conditions. Local conditions may vary. For more information on the Drought Monitor, go to <https://droughtmonitor.unl.edu/About.aspx>

Author:

Anthony Artusa
 NOAA/NWS/NCEP/CPC

