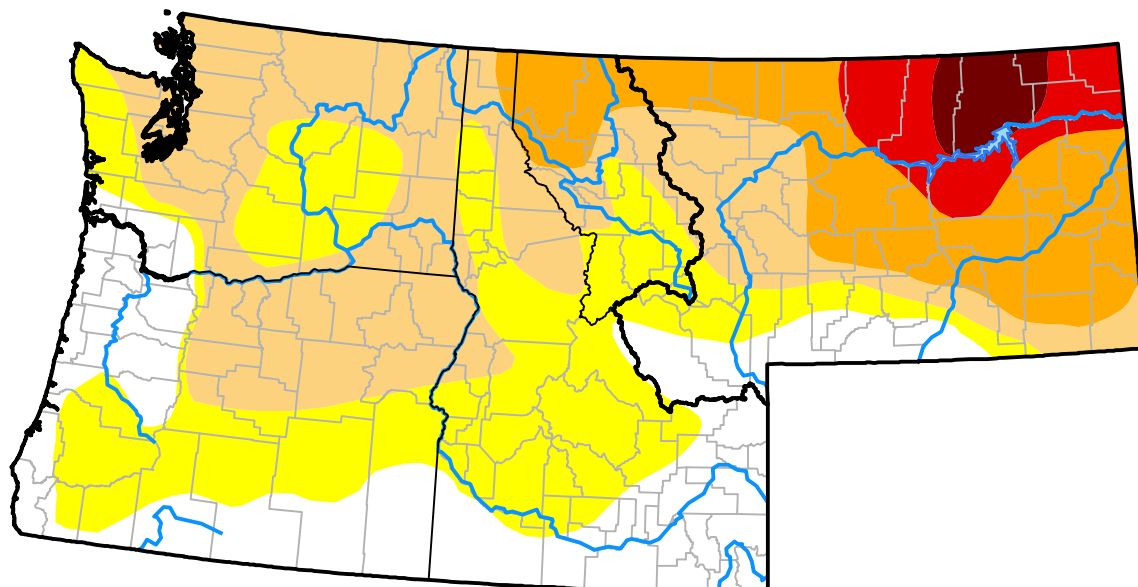


# Northwest RDEWS and Surrounding Areas

## Drought Conditions (Percent Area)

	None	D0-D4	D1-D4	D2-D4	D3-D4	D4
<b>Current</b>	21.80	78.20	49.80	20.70	6.62	2.03
<b>Last Week</b> 10-05-2017	21.80	78.20	49.80	24.73	8.71	3.79
<b>3 Months Ago</b> 07-13-2017	79.82	20.18	16.65	14.05	8.19	0.00
<b>Start of Calendar Year</b> 01-05-2017	79.78	20.22	3.12	0.00	0.00	0.00
<b>Start of Water Year</b> 09-28-2017	20.50	79.50	53.51	26.18	15.91	6.53
<b>One Year Ago</b> 10-13-2016	39.99	60.01	16.86	3.14	0.00	0.00



## Intensity:

None	D2 Severe Drought
D0 Abnormally Dry	D3 Extreme Drought
D1 Moderate Drought	D4 Exceptional Drought

The Drought Monitor focuses on broad-scale conditions. Local conditions may vary. For more information on the Drought Monitor, go to <https://droughtmonitor.unl.edu/About.aspx>

## Author:

Anthony Artusa  
NOAA/NWS/NCEP/CPC

