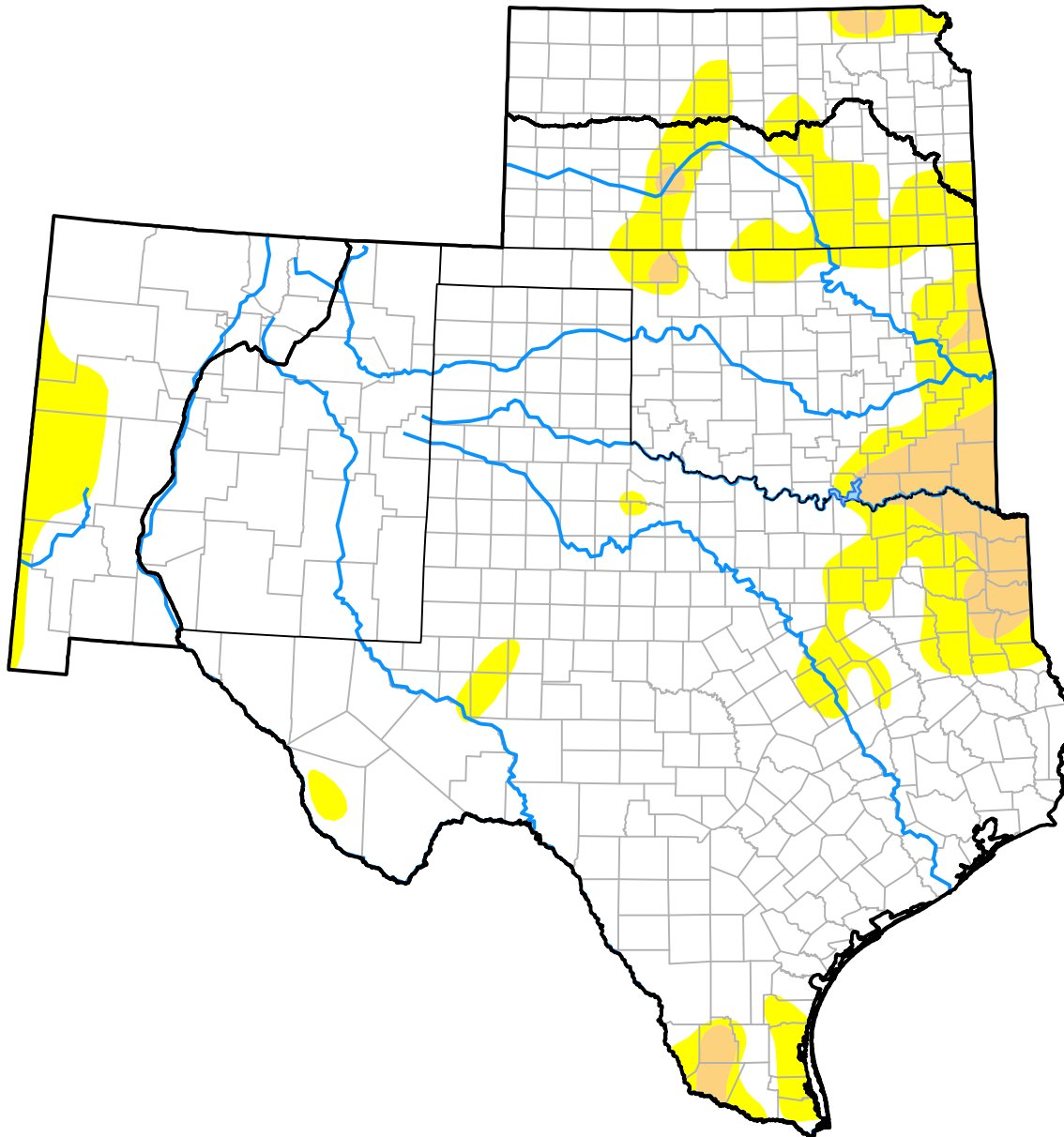


U.S. Drought Monitor

Southern Plains RDEWS

October 10, 2017
 (Released Thursday, Oct. 12, 2017)
 Valid 8 a.m. EDT



Drought Conditions (Percent Area)

	None	D0	D1	D2	D3	D4
Current	85.74	10.57	3.69	0.00	0.00	0.00
Last Week <i>10-05-2017</i>	81.91	14.65	3.44	0.00	0.00	0.00
3 Months Ago <i>07-13-2017</i>	74.37	18.22	7.41	0.00	0.00	0.00
Start of Calendar Year <i>01-05-2017</i>	65.81	16.66	7.86	8.80	0.87	0.00
Start of Water Year <i>09-28-2017</i>	73.50	23.96	2.52	0.02	0.00	0.00
One Year Ago <i>10-13-2016</i>	69.51	25.02	5.01	0.45	0.00	0.00

Intensity:

- None
- D0 Abnormally Dry
- D1 Moderate Drought
- D2 Severe Drought
- D3 Extreme Drought
- D4 Exceptional Drought

The Drought Monitor focuses on broad-scale conditions. Local conditions may vary. For more information on the Drought Monitor, go to <https://droughtmonitor.unl.edu/About.aspx>

Author:

Anthony Artusa
 NOAA/NWS/NCEP/CPC

