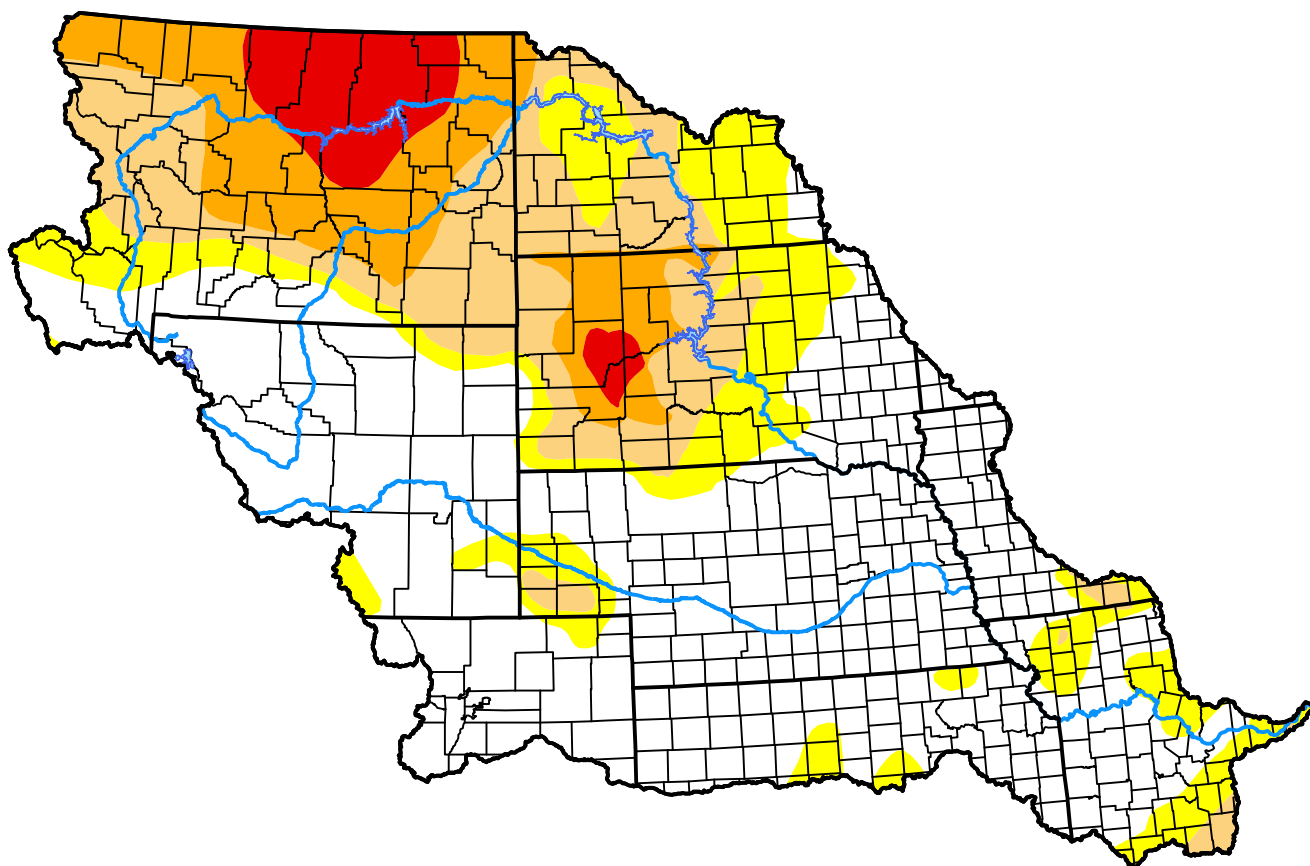


U.S. Drought Monitor Missouri Watershed

October 17, 2017
(Released Thursday, Oct. 19, 2017)
Valid 8 a.m. EDT



Intensity:



The Drought Monitor focuses on broad-scale conditions. Local conditions may vary. For more information on the Drought Monitor, go to <https://droughtmonitor.unl.edu/About.aspx>

Author:

Jessica Blunden
NCEI/NOAA



droughtmonitor.unl.edu