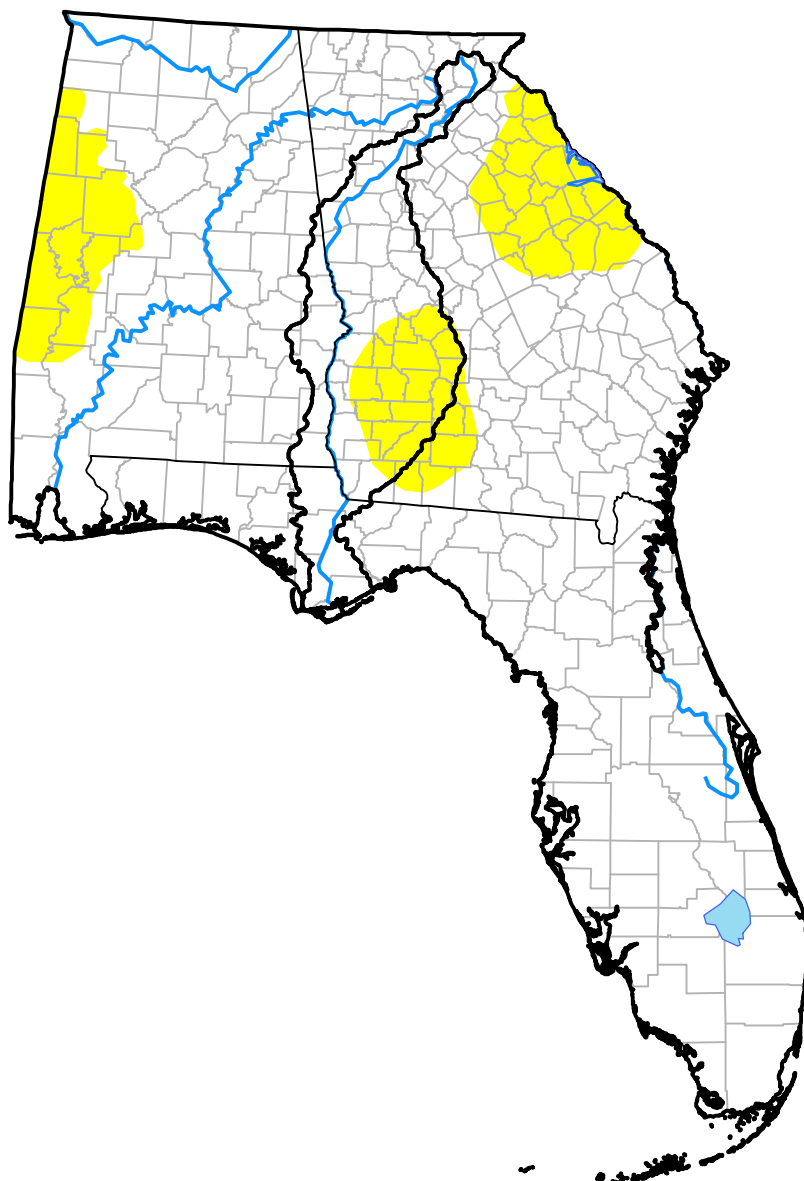


# U.S. Drought Monitor ACF River Basin RDEWS

October 17, 2017  
(Released Thursday, Oct. 19, 2017)  
Valid 8 a.m. EDT



## Intensity:



*The Drought Monitor focuses on broad-scale conditions. Local conditions may vary. For more information on the Drought Monitor, go to <https://droughtmonitor.unl.edu/About.aspx>*

## Author:

Jessica Blunden  
NCEI/NOAA



[droughtmonitor.unl.edu](https://droughtmonitor.unl.edu)