

# U.S. Drought Monitor

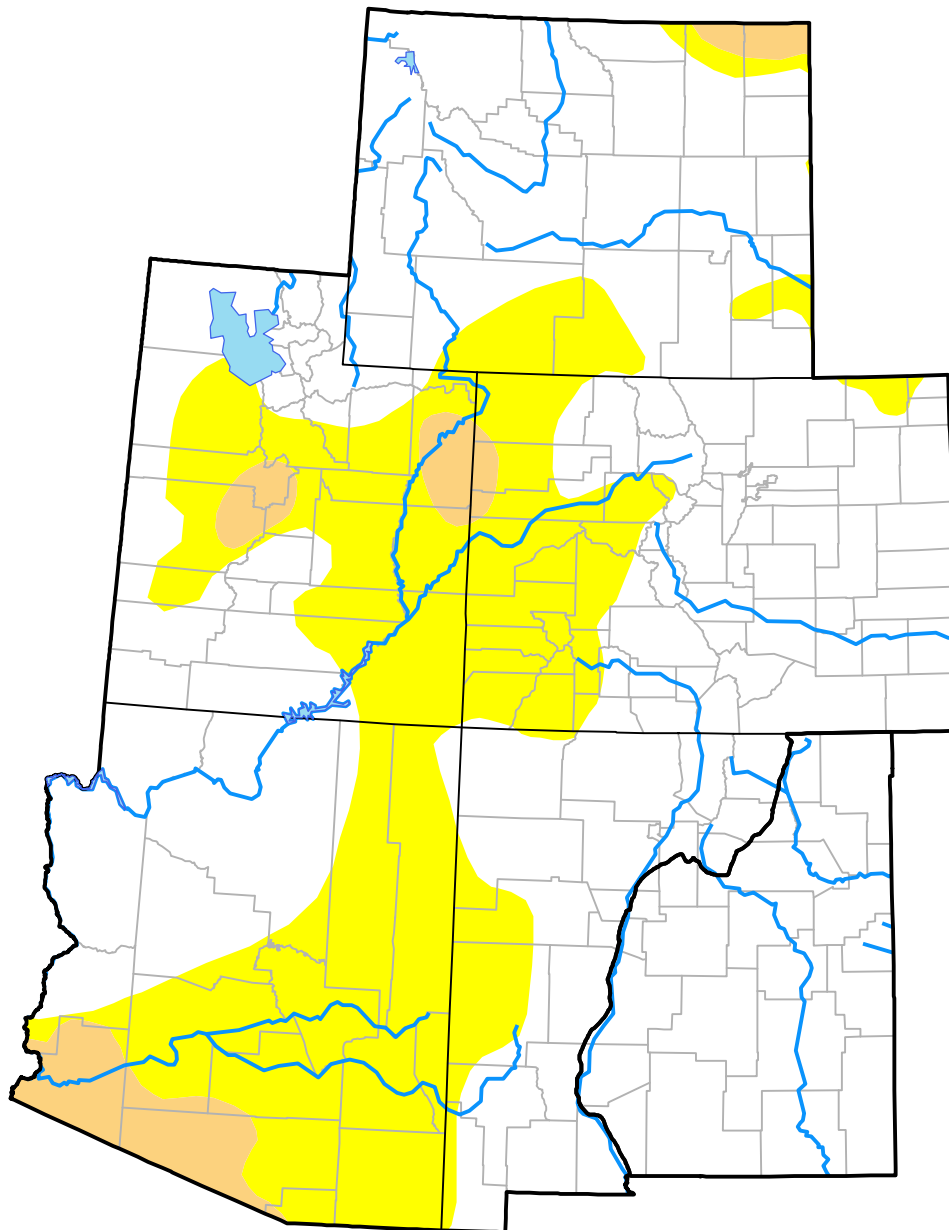
## Intermountain West RDEWS

**October 17, 2017**  
*(Released Thursday, Oct. 19, 2017)*

Valid 8 a.m. EDT

*Drought Conditions (Percent Area)*

	None	D0	D1	D2	D3	D4
<b>Current</b>	67.95	27.97	4.09	0.00	0.00	0.00
<b>Last Week</b> <i>10-12-2017</i>	68.92	26.99	4.09	0.00	0.00	0.00
<b>3 Months Ago</b> <i>07-20-2017</i>	56.43	33.99	9.31	0.27	0.00	0.00
<b>Start of Calendar Year</b> <i>01-05-2017</i>	49.44	31.67	17.38	1.51	0.00	0.00
<b>Start of Water Year</b> <i>09-28-2017</i>	66.55	28.71	4.74	0.00	0.00	0.00
<b>One Year Ago</b> <i>10-20-2016</i>	45.26	39.34	13.77	1.63	0.00	0.00



***Intensity:***

- None
- D0 Abnormally Dry
- D1 Moderate Drought
- D2 Severe Drought
- D3 Extreme Drought
- D4 Exceptional Drought

*The Drought Monitor focuses on broad-scale conditions. Local conditions may vary. For more information on the Drought Monitor, go to <https://droughtmonitor.unl.edu/About.aspx>*

***Author:***

Jessica Blunden  
 NCEI/NOAA



**droughtmonitor.unl.edu**