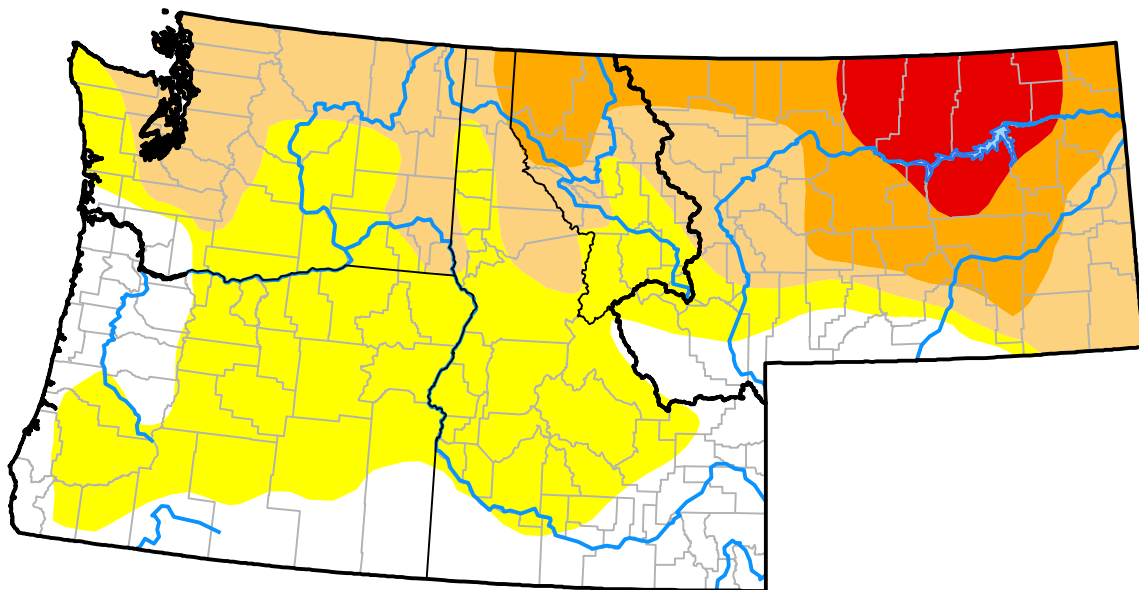


U.S. Drought Monitor

Pacific Northwest RDEWS

October 17, 2017
(Released Thursday, Oct. 19, 2017)
 Valid 8 a.m. EDT



Drought Conditions (Percent Area)

	None	D0-D4	D1-D4	D2-D4	D3-D4	D4
Current	26.42	73.58	23.89	3.64	0.00	0.00
Last Week <i>10-12-2017</i>	26.36	73.64	36.81	3.64	0.00	0.00
3 Months Ago <i>07-20-2017</i>	75.65	24.35	0.00	0.00	0.00	0.00
Start of Calendar Year <i>01-05-2017</i>	81.28	18.72	3.23	0.00	0.00	0.00
Start of Water Year <i>09-28-2017</i>	26.16	73.84	40.16	6.10	0.00	0.00
One Year Ago <i>10-20-2016</i>	65.95	34.05	14.24	0.93	0.00	0.00

Intensity:



The Drought Monitor focuses on broad-scale conditions. Local conditions may vary. For more information on the Drought Monitor, go to <https://droughtmonitor.unl.edu/About.aspx>

Author:

Jessica Blunden
 NCEI/NOAA

