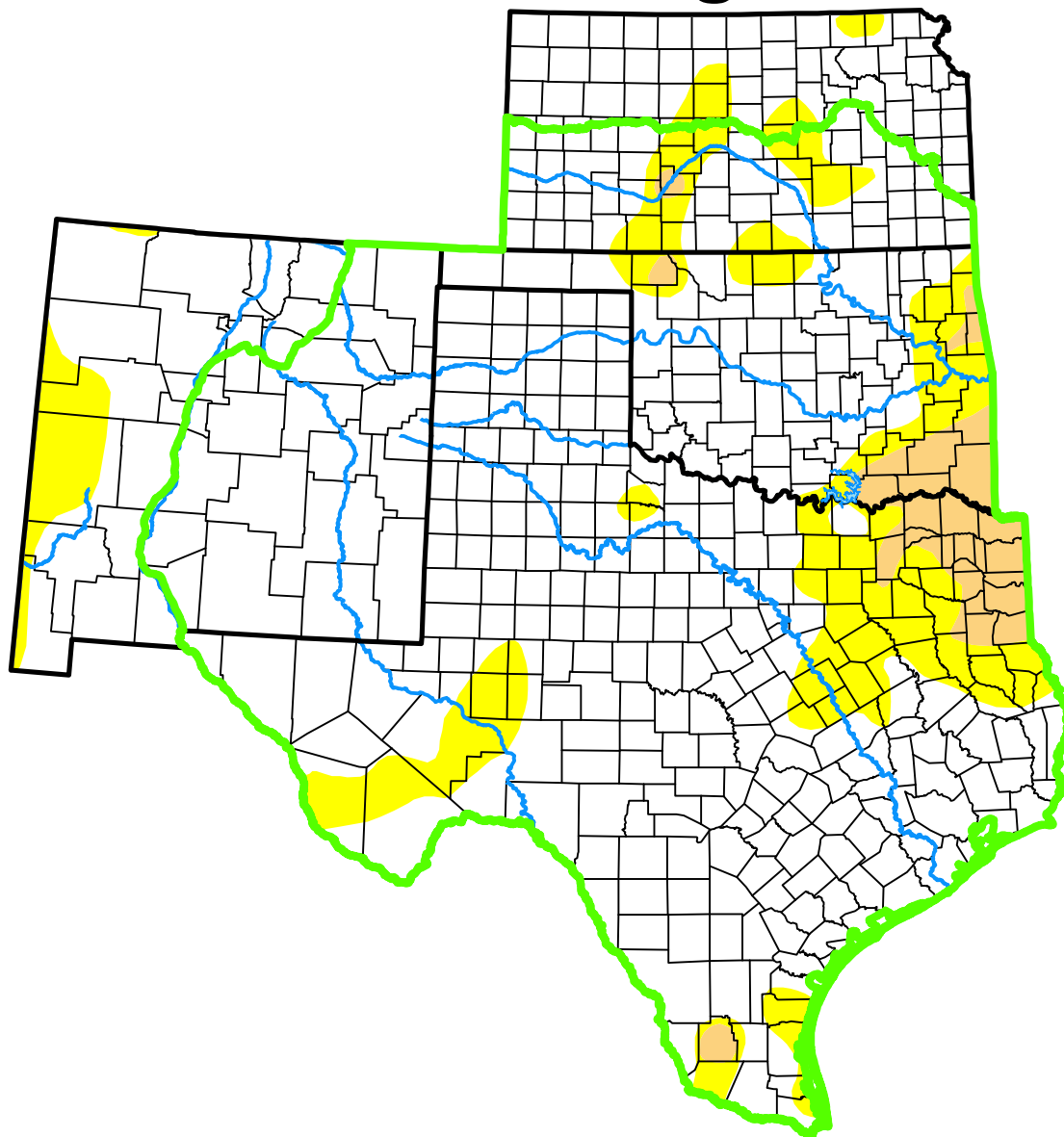


U.S. Drought Monitor

Southern Plains DEWS

and Surrounding Areas



October 17, 2017

(Released Thursday, Oct. 19, 2017)

Valid 8 a.m. EDT

Drought Conditions (Percent Area)

	None	D0-D4	D1-D4	D2-D4	D3-D4	D4
Current	81.49	18.51	4.56	0.00	0.00	0.00
Last Week <i>10-10-2017</i>	83.54	16.46	3.95	0.00	0.00	0.00
3 Months Ago <i>07-18-2017</i>	71.69	28.31	6.74	0.47	0.00	0.00
Start of Calendar Year <i>01-03-2017</i>	58.87	41.13	21.68	12.58	0.91	0.00
Start of Water Year <i>09-26-2017</i>	72.38	27.62	3.52	0.15	0.00	0.00
One Year Ago <i>10-18-2016</i>	63.85	36.15	7.51	0.51	0.00	0.00

(Statistics for area highlighted in green)

Intensity:

None	D2 Severe Drought
D0 Abnormally Dry	D3 Extreme Drought
D1 Moderate Drought	D4 Exceptional Drought

The Drought Monitor focuses on broad-scale conditions. Local conditions may vary. For more information on the Drought Monitor, go to <https://droughtmonitor.unl.edu/About.aspx>

Author:

Jessica Blunden
NCEI/NOAA



droughtmonitor.unl.edu