

U.S. Drought Monitor

Lower Mississippi Watershed

October 24, 2017

(Released Thursday, Oct. 26, 2017)

Valid 8 a.m. EDT

Drought Conditions (Percent Area)

	None	D0	D1	D2	D3	D4
Current	50.53	34.34	15.12	0.00	0.00	0.00
Last Week 10-19-2017	56.51	35.49	8.00	0.00	0.00	0.00
3 Months Ago 07-27-2017	98.82	1.18	0.00	0.00	0.00	0.00
Start of Calendar Year 01-05-2017	46.67	26.49	26.84	0.00	0.00	0.00
Start of Water Year 09-28-2017	88.20	11.80	0.00	0.00	0.00	0.00
One Year Ago 10-27-2016	6.57	31.09	47.75	13.78	0.81	0.00

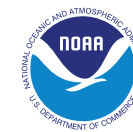
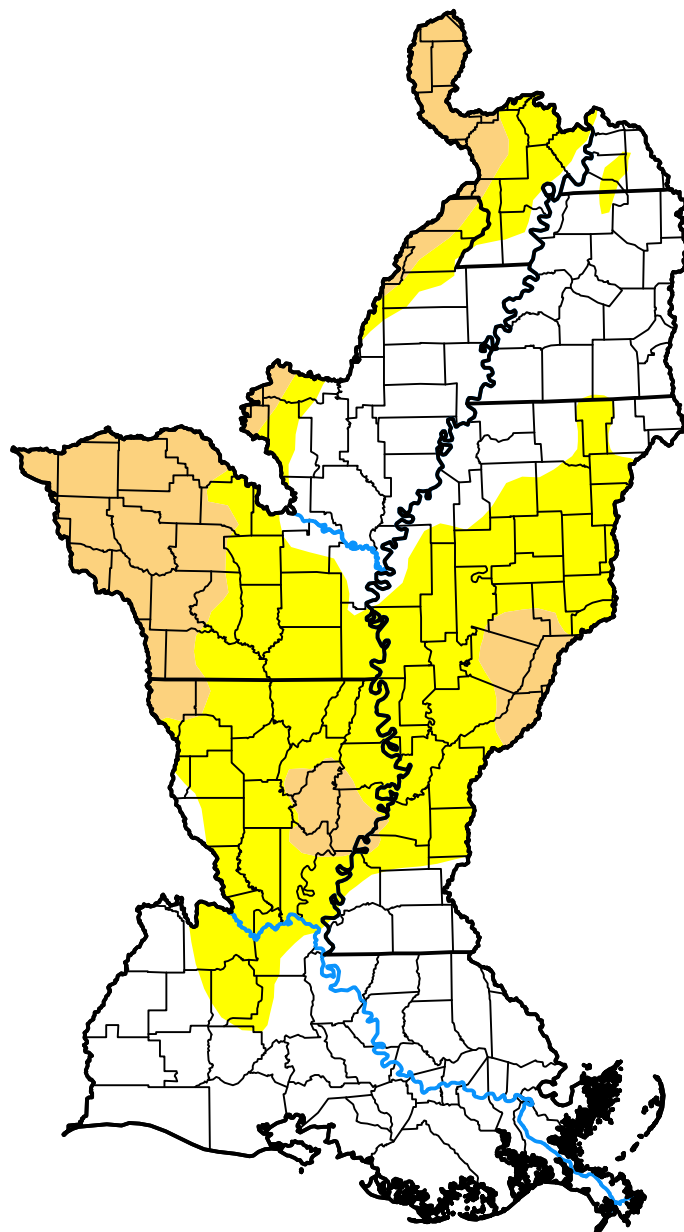
Intensity:

 None	 D2 Severe Drought
 D0 Abnormally Dry	 D3 Extreme Drought
 D1 Moderate Drought	 D4 Exceptional Drought

The Drought Monitor focuses on broad-scale conditions. Local conditions may vary. For more information on the Drought Monitor, go to <https://droughtmonitor.unl.edu/About.aspx>

Author:

Eric Luebehusen
U.S. Department of Agriculture



droughtmonitor.unl.edu