

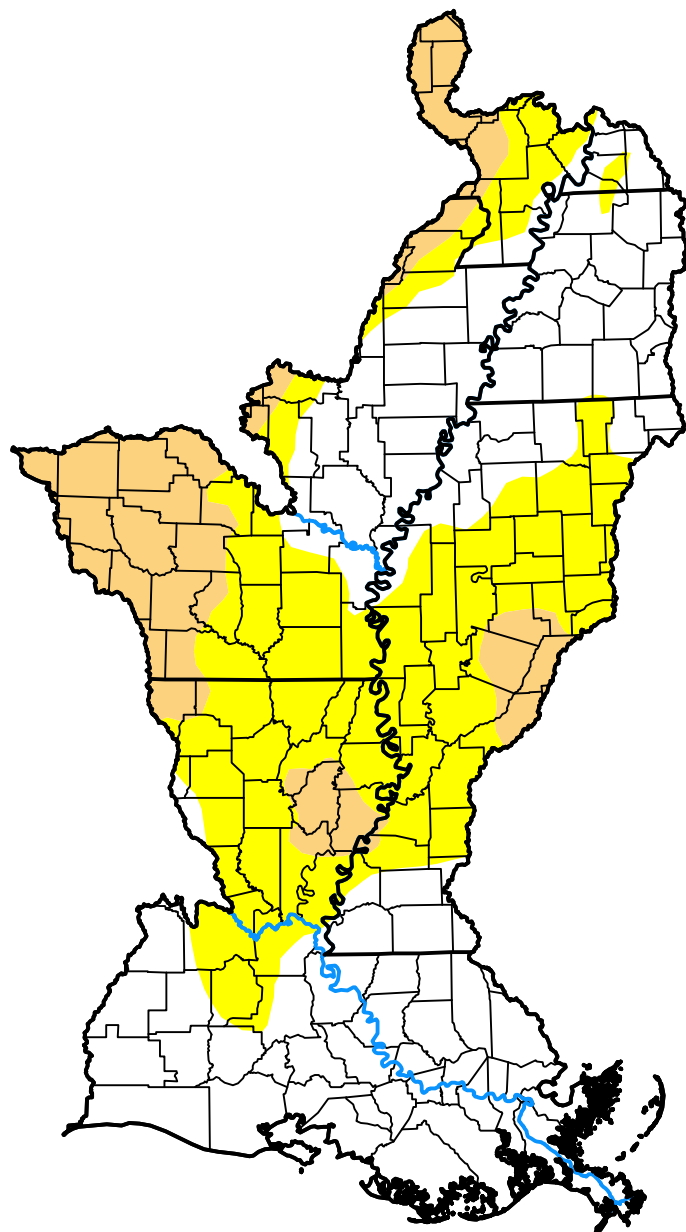
U.S. Drought Monitor

Lower Mississippi Watershed

October 24, 2017

(Released Thursday, Oct. 26, 2017)

Valid 8 a.m. EDT



Drought Conditions (Percent Area)

	None	D0-D4	D1-D4	D2-D4	D3-D4	D4
Current	50.53	49.47	15.12	0.00	0.00	0.00
Last Week <i>10-19-2017</i>	56.51	43.49	8.00	0.00	0.00	0.00
3 Months Ago <i>07-27-2017</i>	98.82	1.18	0.00	0.00	0.00	0.00
Start of Calendar Year <i>01-05-2017</i>	46.67	53.33	26.84	0.00	0.00	0.00
Start of Water Year <i>09-28-2017</i>	88.20	11.80	0.00	0.00	0.00	0.00
One Year Ago <i>10-27-2016</i>	6.57	93.43	62.34	14.59	0.81	0.00

Intensity:

None	D2 Severe Drought
D0 Abnormally Dry	D3 Extreme Drought
D1 Moderate Drought	D4 Exceptional Drought

The Drought Monitor focuses on broad-scale conditions. Local conditions may vary. For more information on the Drought Monitor, go to <https://droughtmonitor.unl.edu/About.aspx>

Author:

Eric Luebehusen
U.S. Department of Agriculture



droughtmonitor.unl.edu