

# U.S. Drought Monitor

## Pacific Northwest Watershed

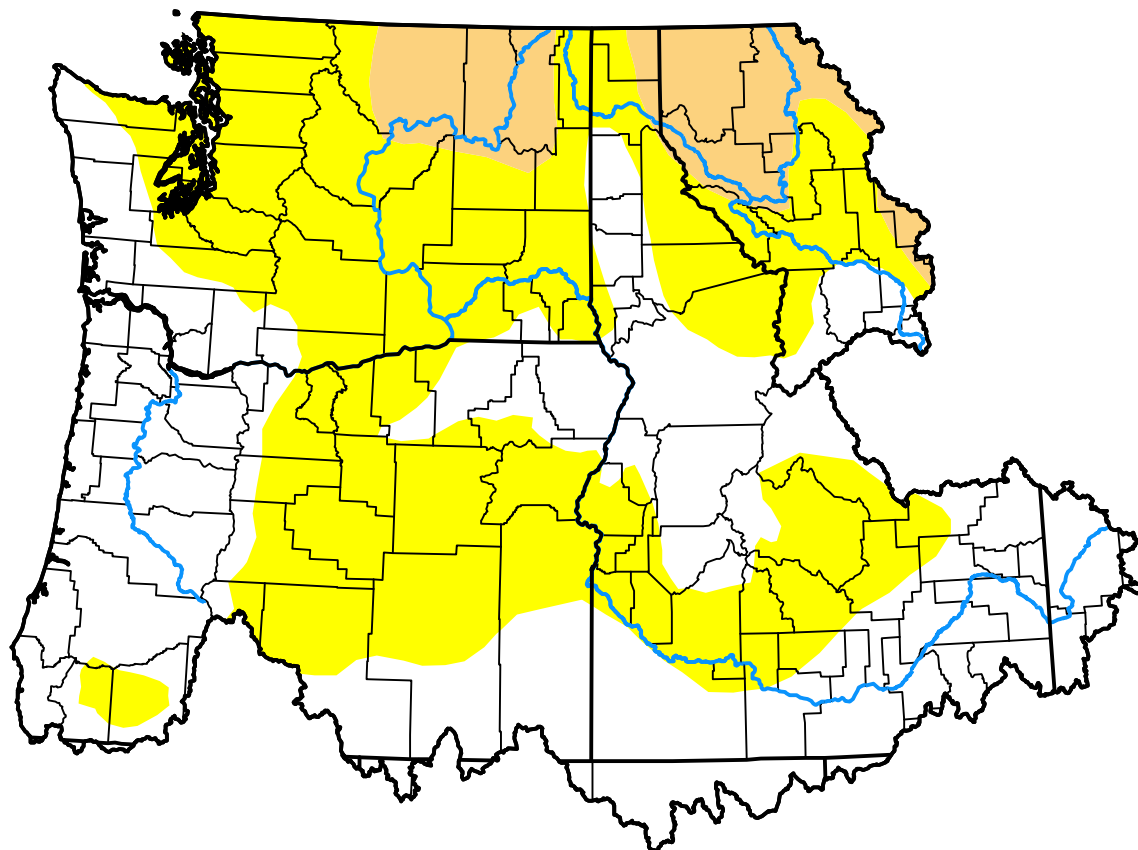
**October 24, 2017**

(Released Thursday, Oct. 26, 2017)

Valid 8 a.m. EDT

### Drought Conditions (Percent Area)

	None	D0	D1	D2	D3	D4
<b>Current</b>	46.22	45.45	8.32	0.00	0.00	0.00
<b>Last Week</b> 10-19-2017	27.24	48.94	20.19	3.63	0.00	0.00
<b>3 Months Ago</b> 07-27-2017	70.11	28.28	1.61	0.00	0.00	0.00
<b>Start of Calendar Year</b> 01-05-2017	81.42	15.28	3.29	0.00	0.00	0.00
<b>Start of Water Year</b> 09-28-2017	26.97	33.00	33.93	6.10	0.00	0.00
<b>One Year Ago</b> 10-27-2016	75.42	12.68	10.97	0.93	0.00	0.00



### Intensity:

None	D2 Severe Drought
D0 Abnormally Dry	D3 Extreme Drought
D1 Moderate Drought	D4 Exceptional Drought

The Drought Monitor focuses on broad-scale conditions. Local conditions may vary. For more information on the Drought Monitor, go to <https://droughtmonitor.unl.edu/About.aspx>

### Author:

Eric Luebehusen  
U.S. Department of Agriculture



[droughtmonitor.unl.edu](https://droughtmonitor.unl.edu)