

U.S. Drought Monitor

Pacific Northwest Watershed

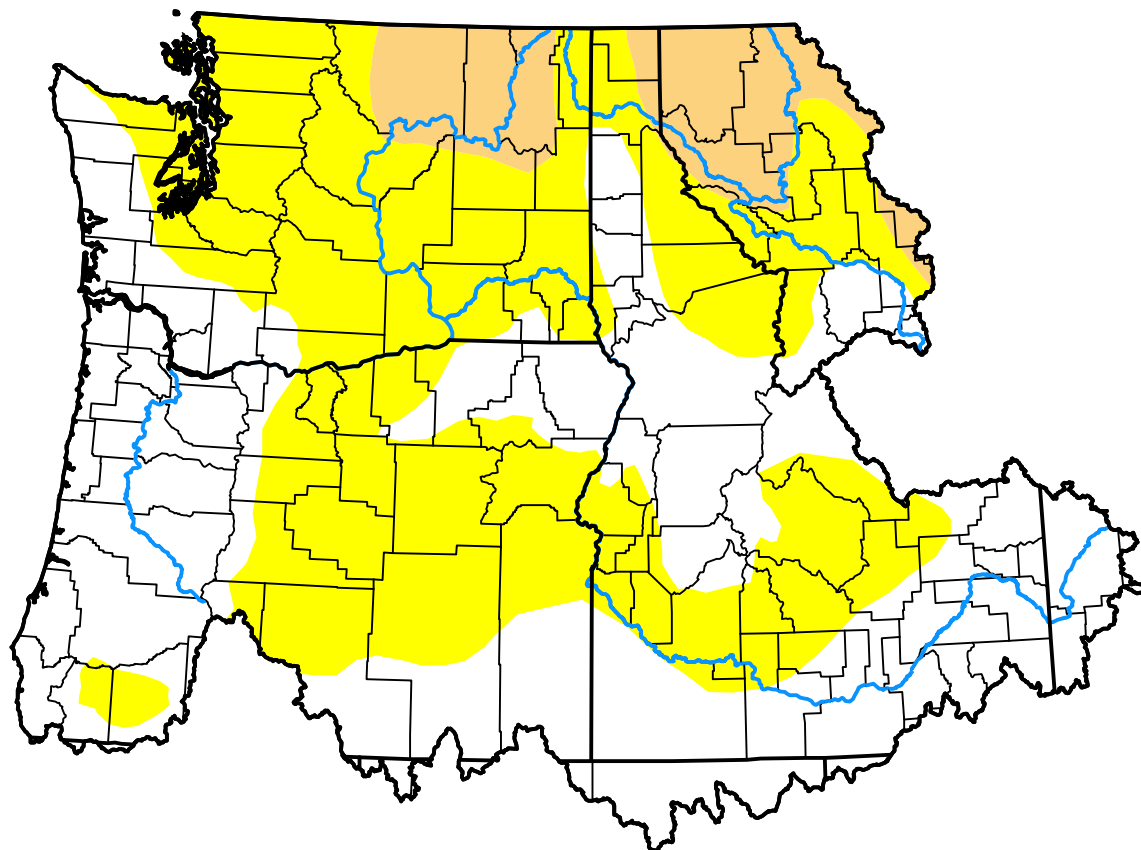
October 24, 2017

(Released Thursday, Oct. 26, 2017)

Valid 8 a.m. EDT

Drought Conditions (Percent Area)

	None	D0-D4	D1-D4	D2-D4	D3-D4	D4
Current	46.22	53.78	8.32	0.00	0.00	0.00
Last Week 10-19-2017	27.24	72.76	23.82	3.63	0.00	0.00
3 Months Ago 07-27-2017	70.11	29.89	1.61	0.00	0.00	0.00
Start of Calendar Year 01-05-2017	81.42	18.58	3.29	0.00	0.00	0.00
Start of Water Year 09-28-2017	26.97	73.03	40.02	6.10	0.00	0.00
One Year Ago 10-27-2016	75.42	24.58	11.90	0.93	0.00	0.00



Intensity:

None	D2 Severe Drought
D0 Abnormally Dry	D3 Extreme Drought
D1 Moderate Drought	D4 Exceptional Drought

The Drought Monitor focuses on broad-scale conditions. Local conditions may vary. For more information on the Drought Monitor, go to <https://droughtmonitor.unl.edu/About.aspx>

Author:

Eric Luebehusen
U.S. Department of Agriculture



droughtmonitor.unl.edu