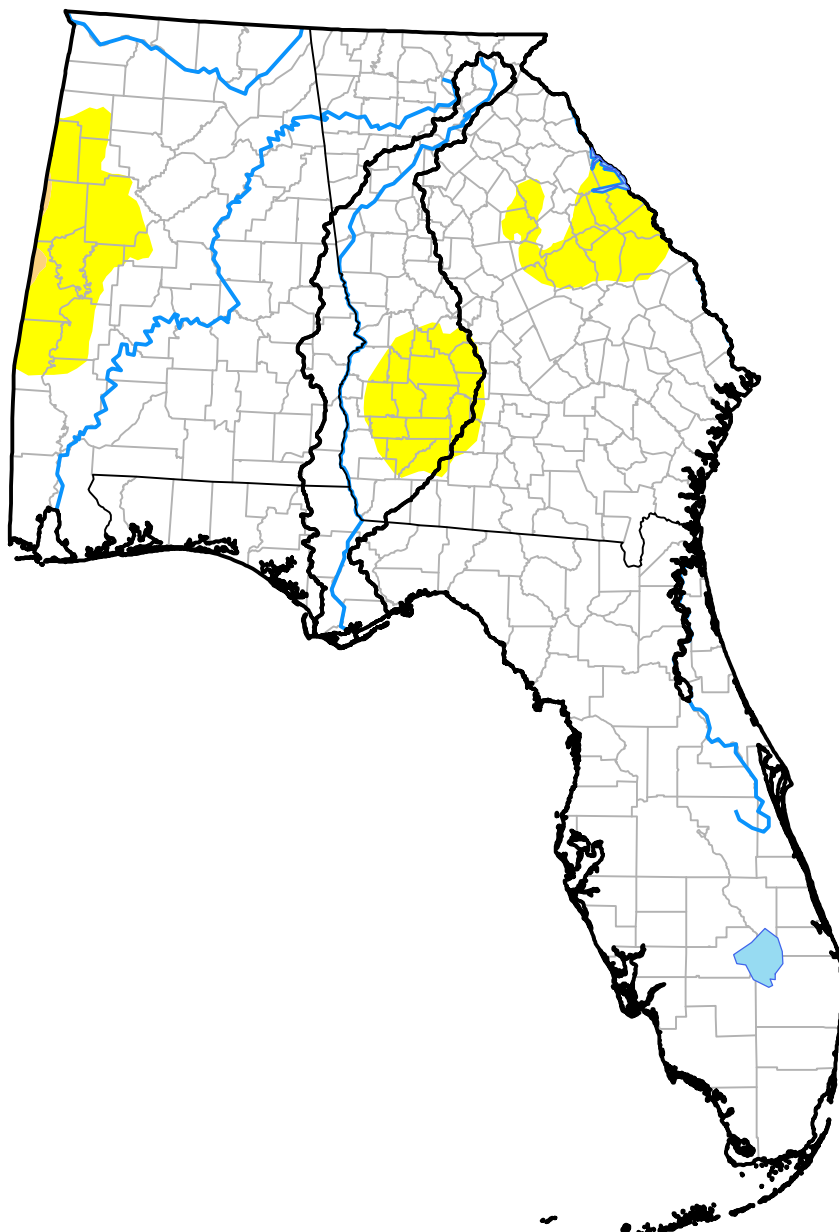


# er Basin RDEWS and Surrounding Areas

(Released Thursday, Oct. 26, 2017)

10:08 a.m. EDT



Drought Conditions (Percent Area)

	None	D0	D1	D2	D3	D4
<b>Current</b>	89.76	10.11	0.13	0.00	0.00	0.00
<b>Last Week</b> 10-19-2017	86.77	13.23	0.00	0.00	0.00	0.00
<b>3 Months Ago</b> 07-27-2017	99.98	0.02	0.00	0.00	0.00	0.00
<b>Start of Calendar Year</b> 01-05-2017	15.88	35.08	20.14	14.89	14.01	0.00
<b>Start of Water Year</b> 09-28-2017	100.00	0.00	0.00	0.00	0.00	0.00
<b>One Year Ago</b> 10-27-2016	40.02	3.67	16.02	18.19	14.74	7.35

Intensity:

None	D2 Severe Drought
D0 Abnormally Dry	D3 Extreme Drought
D1 Moderate Drought	D4 Exceptional Drought

The Drought Monitor focuses on broad-scale conditions. Local conditions may vary. For more information on the Drought Monitor, go to <https://droughtmonitor.unl.edu/About.aspx>

Author:

Eric Luebehusen  
U.S. Department of Agriculture

