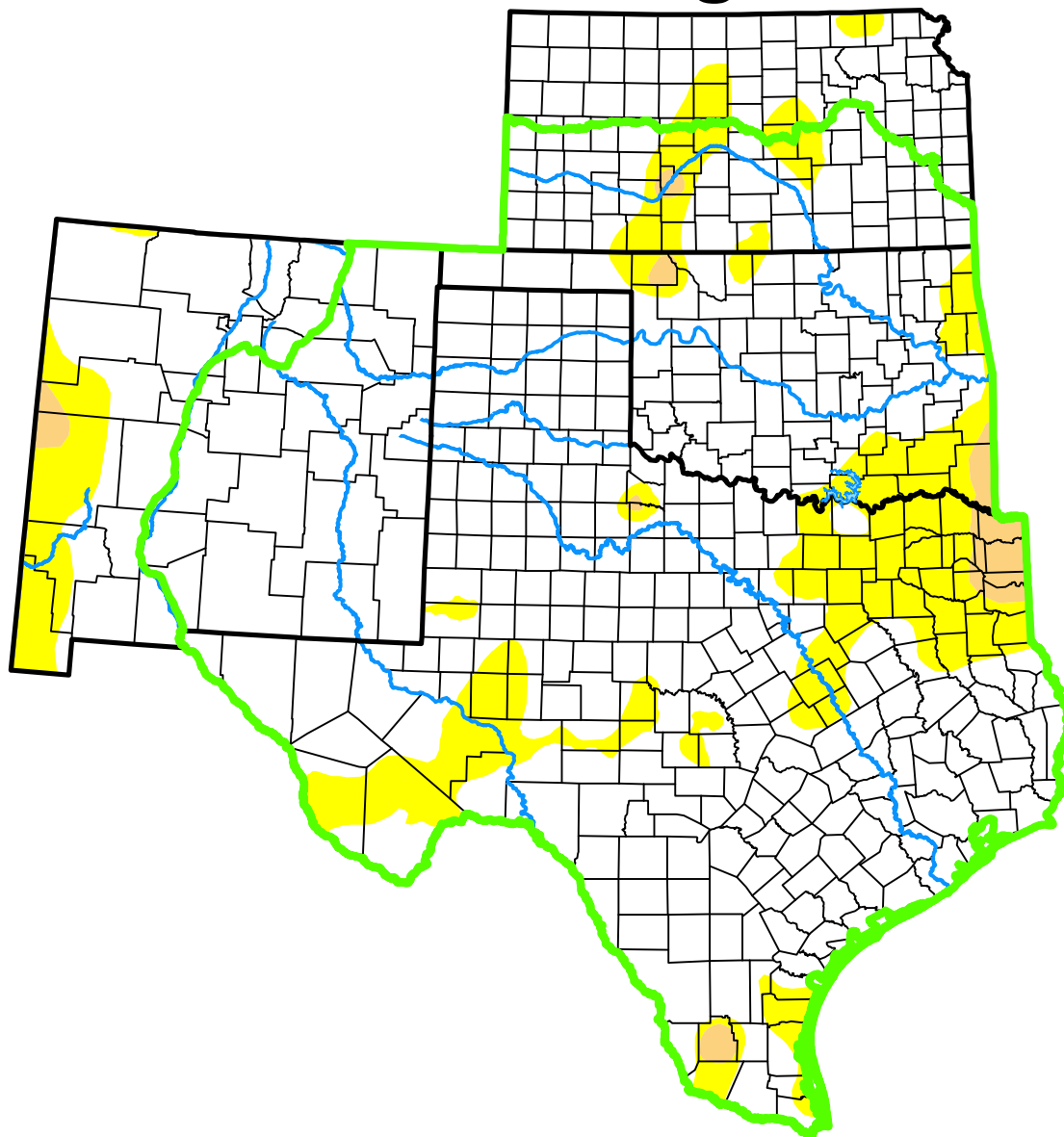


U.S. Drought Monitor

Southern Plains DEWS

and Surrounding Areas



October 24, 2017

(Released Thursday, Oct. 26, 2017)

Valid 8 a.m. EDT

Drought Conditions (Percent Area)

	None	D0	D1	D2	D3	D4
Current	83.49	14.91	1.60	0.00	0.00	0.00
Last Week <i>10-17-2017</i>	81.49	13.96	4.56	0.00	0.00	0.00
3 Months Ago <i>07-25-2017</i>	66.61	25.40	6.59	1.40	0.00	0.00
Start of Calendar Year <i>01-03-2017</i>	58.87	19.45	9.10	11.67	0.91	0.00
Start of Water Year <i>09-26-2017</i>	72.38	24.10	3.37	0.15	0.00	0.00
One Year Ago <i>10-25-2016</i>	60.26	27.99	10.41	1.34	0.00	0.00

(Statistics for area highlighted in green)

Intensity:

None	D2 Severe Drought
D0 Abnormally Dry	D3 Extreme Drought
D1 Moderate Drought	D4 Exceptional Drought

The Drought Monitor focuses on broad-scale conditions. Local conditions may vary. For more information on the Drought Monitor, go to <https://droughtmonitor.unl.edu/About.aspx>

Author:

Eric Luebehusen
U.S. Department of Agriculture



droughtmonitor.unl.edu