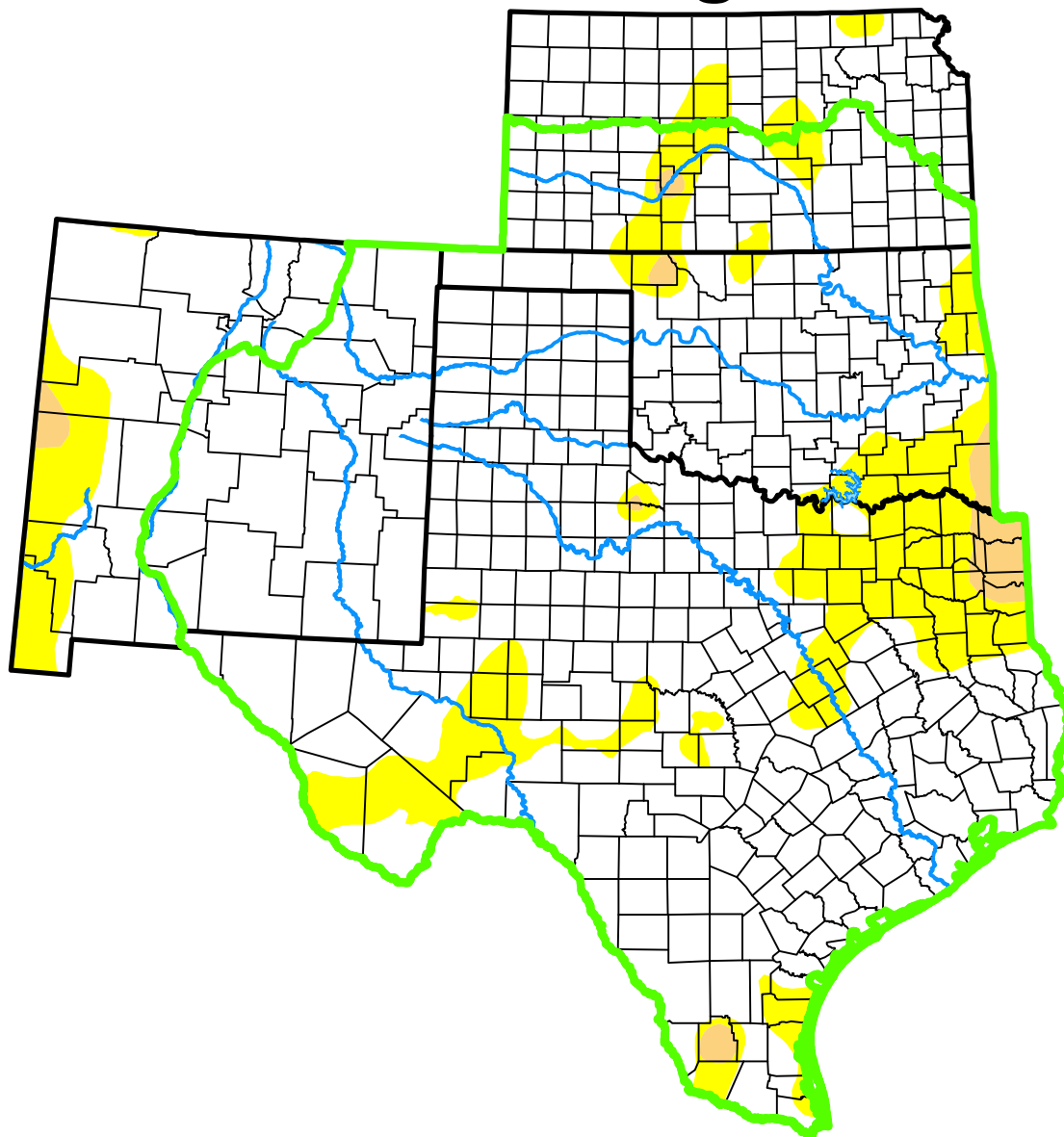


U.S. Drought Monitor

Southern Plains DEWS

and Surrounding Areas



October 24, 2017

(Released Thursday, Oct. 26, 2017)

Valid 8 a.m. EDT

Drought Conditions (Percent Area)

	None	D0-D4	D1-D4	D2-D4	D3-D4	D4
Current	83.49	16.51	1.60	0.00	0.00	0.00
Last Week <i>10-17-2017</i>	81.49	18.51	4.56	0.00	0.00	0.00
3 Months Ago <i>07-25-2017</i>	66.61	33.39	7.98	1.40	0.00	0.00
Start of Calendar Year <i>01-03-2017</i>	58.87	41.13	21.68	12.58	0.91	0.00
Start of Water Year <i>09-26-2017</i>	72.38	27.62	3.52	0.15	0.00	0.00
One Year Ago <i>10-25-2016</i>	60.26	39.74	11.75	1.34	0.00	0.00

(Statistics for area highlighted in green)

Intensity:

None	D2 Severe Drought
D0 Abnormally Dry	D3 Extreme Drought
D1 Moderate Drought	D4 Exceptional Drought

The Drought Monitor focuses on broad-scale conditions. Local conditions may vary. For more information on the Drought Monitor, go to <https://droughtmonitor.unl.edu/About.aspx>

Author:

Eric Luebehusen
U.S. Department of Agriculture



droughtmonitor.unl.edu