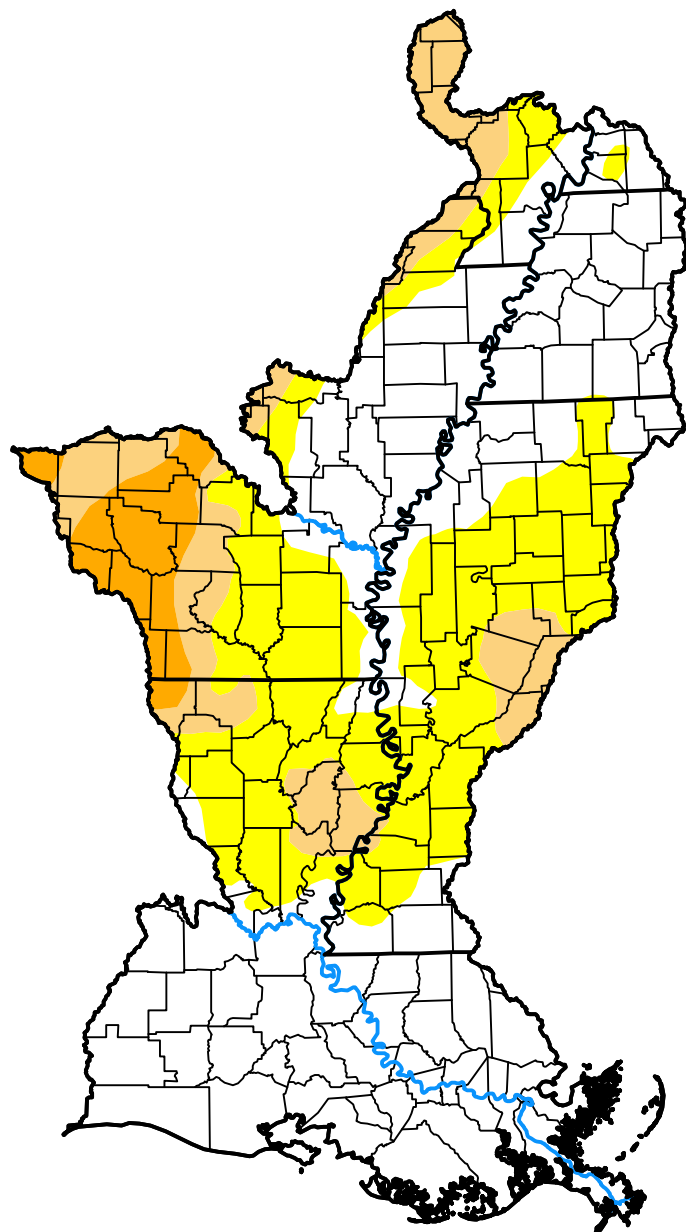


U.S. Drought Monitor

Lower Mississippi Watershed

November 7, 2017
 (Released Thursday, Nov. 9, 2017)
 Valid 7 a.m. EST



Drought Conditions (Percent Area)

	None	D0	D1	D2	D3	D4
Current	55.15	28.69	11.29	4.87	0.00	0.00
Last Week <i>11-02-2017</i>	49.21	34.65	16.14	0.00	0.00	0.00
3 Months Ago <i>08-10-2017</i>	98.20	1.80	0.00	0.00	0.00	0.00
Start of Calendar Year <i>01-05-2017</i>	46.67	26.49	26.84	0.00	0.00	0.00
Start of Water Year <i>09-28-2017</i>	88.20	11.80	0.00	0.00	0.00	0.00
One Year Ago <i>11-10-2016</i>	1.23	12.39	61.48	20.85	4.05	0.00

Intensity:



The Drought Monitor focuses on broad-scale conditions. Local conditions may vary. For more information on the Drought Monitor, go to <https://droughtmonitor.unl.edu/About.aspx>

Author:

David Miskus
 NOAA/NWS/NCEP/CPC

