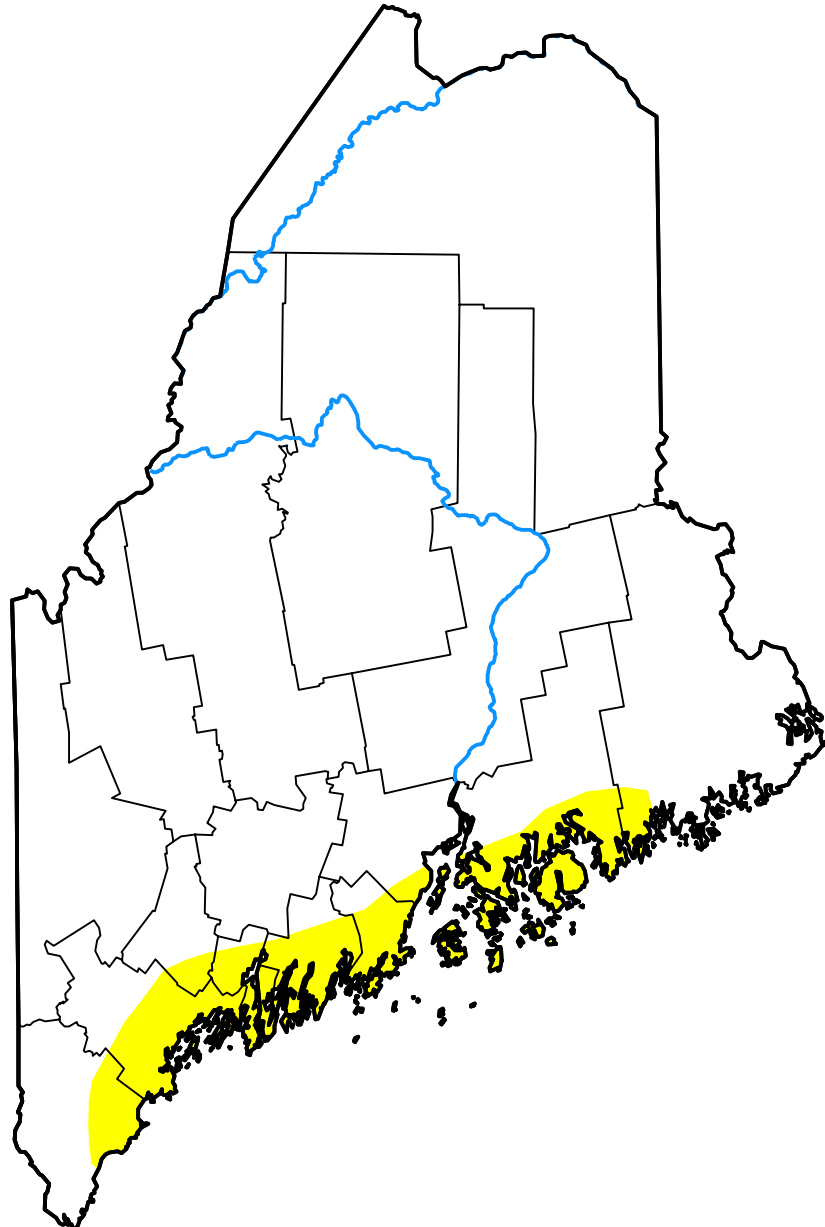


U.S. Drought Monitor

Maine

December 5, 2017
 (Released Thursday, Dec. 7, 2017)
 Valid 7 a.m. EST



Drought Conditions (Percent Area)

	None	D0	D1	D2	D3	D4
Current	92.38	7.62	0.00	0.00	0.00	0.00
Last Week <i>11-30-2017</i>	92.38	7.62	0.00	0.00	0.00	0.00
3 Months Ago <i>09-07-2017</i>	35.65	35.47	28.88	0.00	0.00	0.00
Start of Calendar Year <i>01-05-2017</i>	23.74	13.35	62.34	0.57	0.00	0.00
Start of Water Year <i>09-28-2017</i>	57.81	17.57	24.62	0.00	0.00	0.00
One Year Ago <i>12-08-2016</i>	21.21	11.13	31.15	36.51	0.00	0.00

Intensity:



The Drought Monitor focuses on broad-scale conditions. Local conditions may vary. For more information on the Drought Monitor, go to <https://droughtmonitor.unl.edu/About.aspx>

Author:

David Simeral
 Western Regional Climate Center

