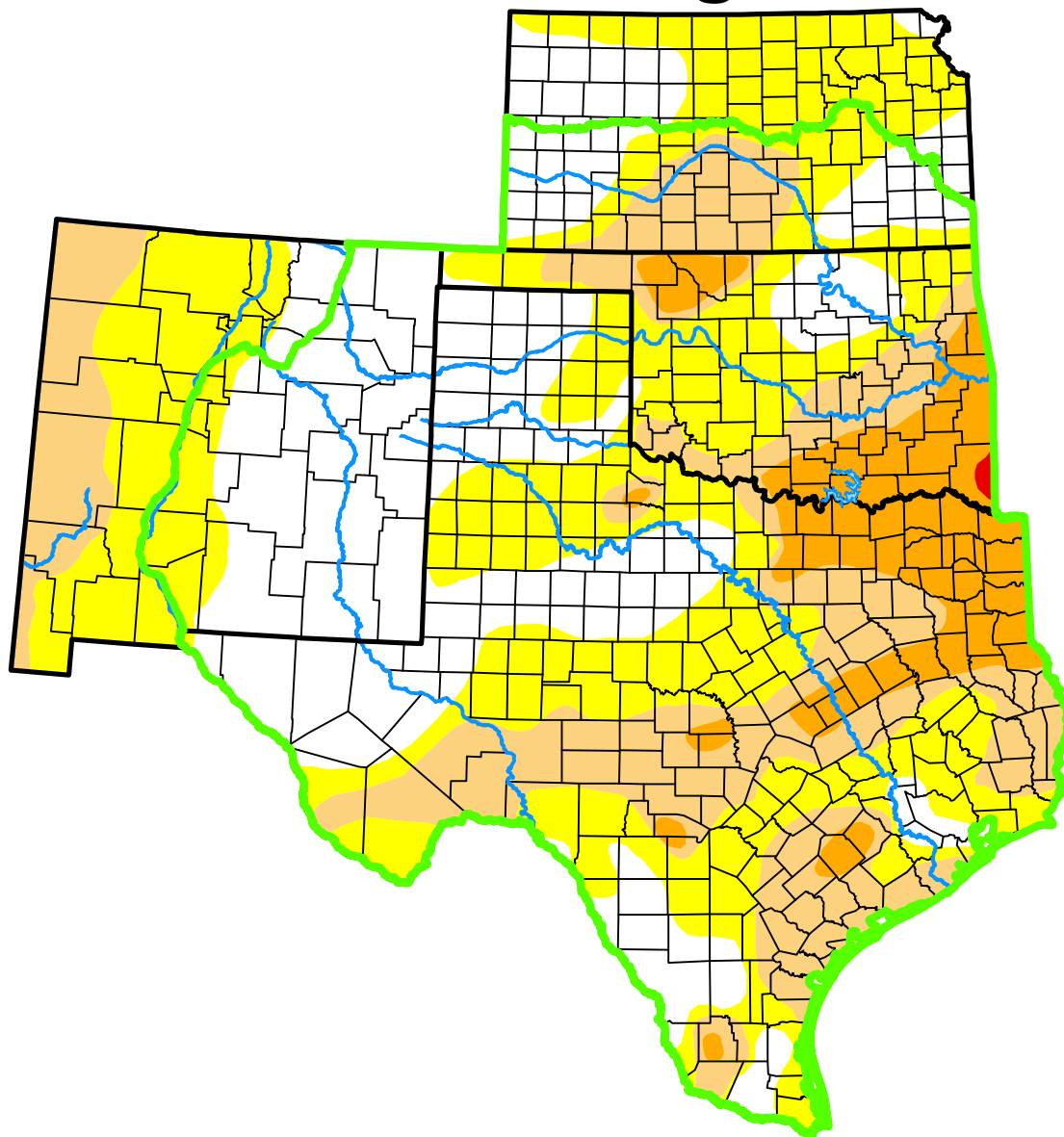


U.S. Drought Monitor

Southern Plains DEWS and Surrounding Areas



December 5, 2017

(Released Thursday, Dec. 7, 2017)

Valid 7 a.m. EST

Drought Conditions (Percent Area)

	None	D0-D4	D1-D4	D2-D4	D3-D4	D4
Current	33.96	66.04	33.30	10.84	0.12	0.00
Last Week <i>11-28-2017</i>	38.27	61.73	30.35	6.62	0.12	0.00
3 Months Ago <i>09-05-2017</i>	94.06	5.94	1.90	0.02	0.00	0.00
Start of Calendar Year <i>01-03-2017</i>	58.87	41.13	21.68	12.58	0.91	0.00
Start of Water Year <i>09-26-2017</i>	72.38	27.62	3.52	0.15	0.00	0.00
One Year Ago <i>12-06-2016</i>	62.83	37.17	16.69	5.19	0.44	0.00

(Statistics for area highlighted in green)

Intensity:

None	D2 Severe Drought
D0 Abnormally Dry	D3 Extreme Drought
D1 Moderate Drought	D4 Exceptional Drought

The Drought Monitor focuses on broad-scale conditions. Local conditions may vary. For more information on the Drought Monitor, go to <https://droughtmonitor.unl.edu/About.aspx>

Author:

David Simeral
Western Regional Climate Center



droughtmonitor.unl.edu