

# U.S. Drought Monitor

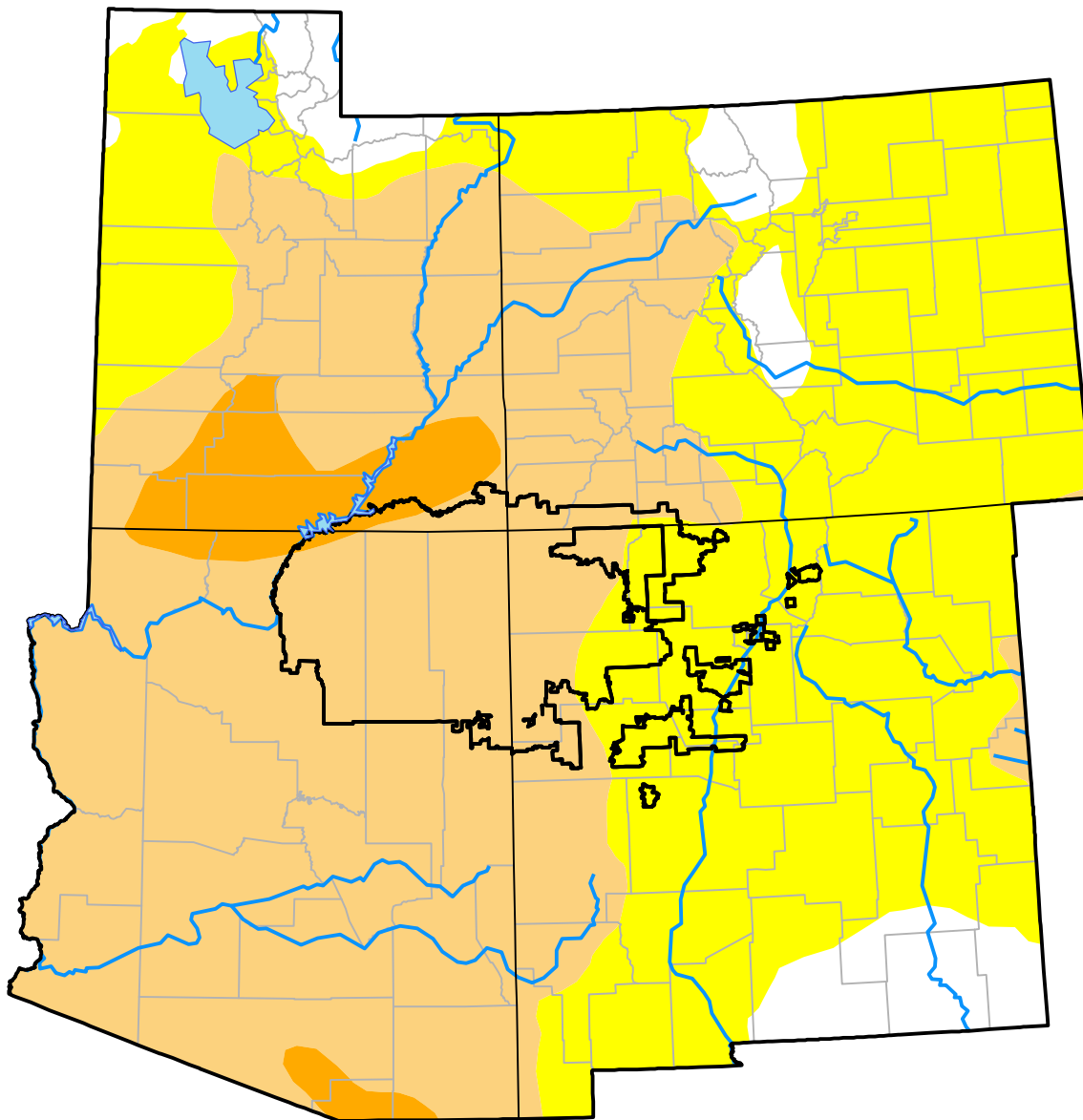
## Four Corners RDEWS

**December 19, 2017**  
 (Released Thursday, Dec. 21, 2017)

Valid 7 a.m. EST

*Drought Conditions (Percent Area)*

	None	D0	D1	D2	D3	D4
<b>Current</b>	0.00	19.39	78.11	2.50	0.00	0.00
<b>Last Week</b> <i>12-14-2017</i>	0.00	19.92	80.08	0.00	0.00	0.00
<b>3 Months Ago</b> <i>09-21-2017</i>	99.67	0.33	0.00	0.00	0.00	0.00
<b>Start of Calendar Year</b> <i>01-05-2017</i>	46.06	33.34	20.60	0.00	0.00	0.00
<b>Start of Water Year</b> <i>09-28-2017</i>	55.63	44.37	0.00	0.00	0.00	0.00
<b>One Year Ago</b> <i>12-22-2016</i>	5.29	66.00	28.71	0.00	0.00	0.00



**Intensity:**

- None
- D0 Abnormally Dry
- D1 Moderate Drought
- D2 Severe Drought
- D3 Extreme Drought
- D4 Exceptional Drought

*The Drought Monitor focuses on broad-scale conditions. Local conditions may vary. For more information on the Drought Monitor, go to <https://droughtmonitor.unl.edu/About.aspx>*

**Author:**

Jessica Blunden  
 NCEI/NOAA



**droughtmonitor.unl.edu**