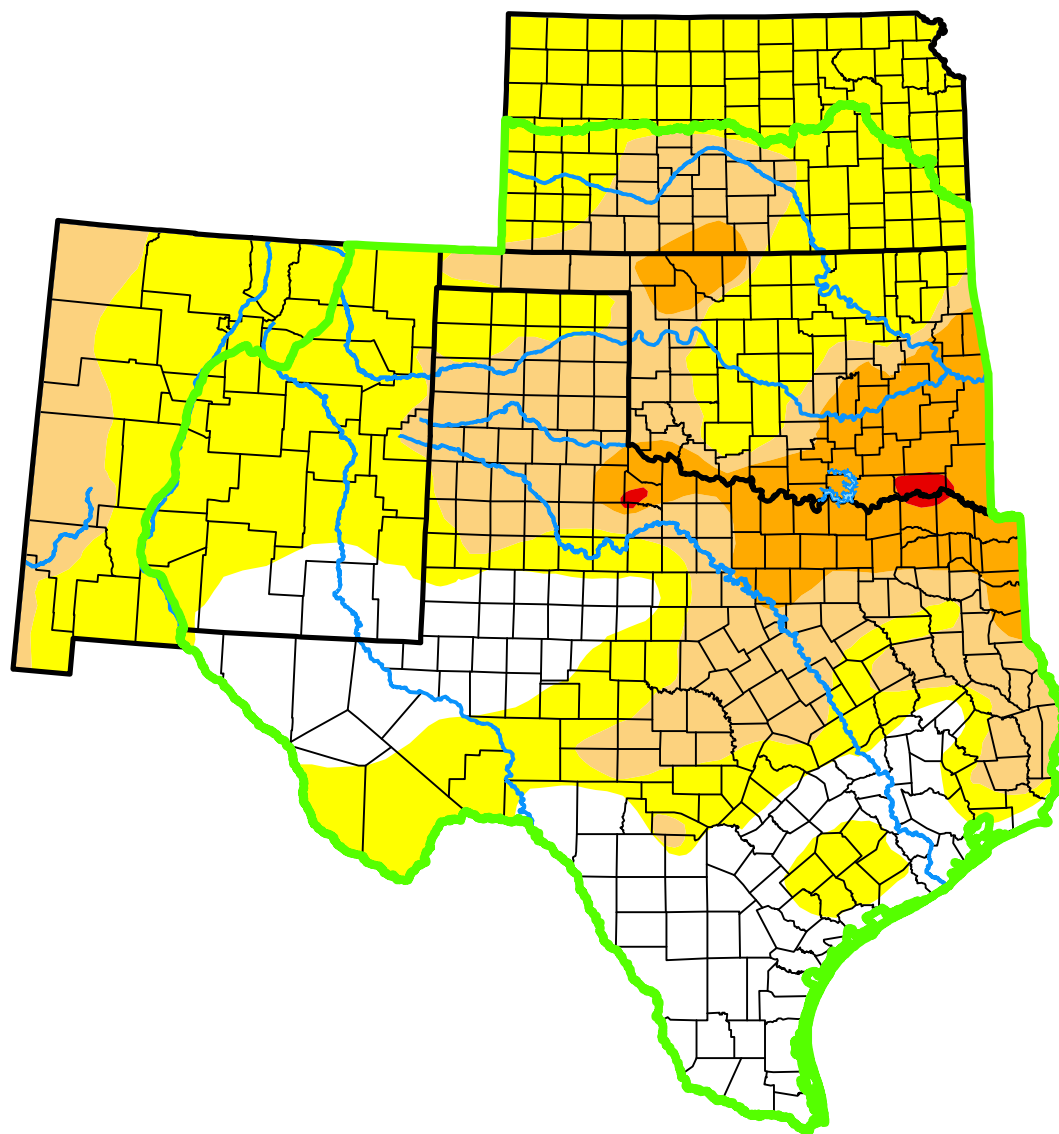


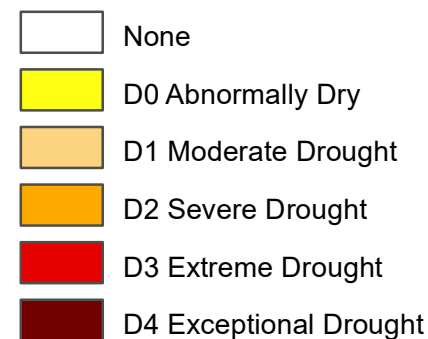
U.S. Drought Monitor

Southern Plains DEWS and Surrounding Areas

December 19, 2017
(Released Thursday, Dec. 21, 2017)
Valid 7 a.m. EST



Intensity:



The Drought Monitor focuses on broad-scale conditions. Local conditions may vary. For more information on the Drought Monitor, go to <https://droughtmonitor.unl.edu/About.aspx>

Author:

Jessica Blunden
NCEI/NOAA



droughtmonitor.unl.edu