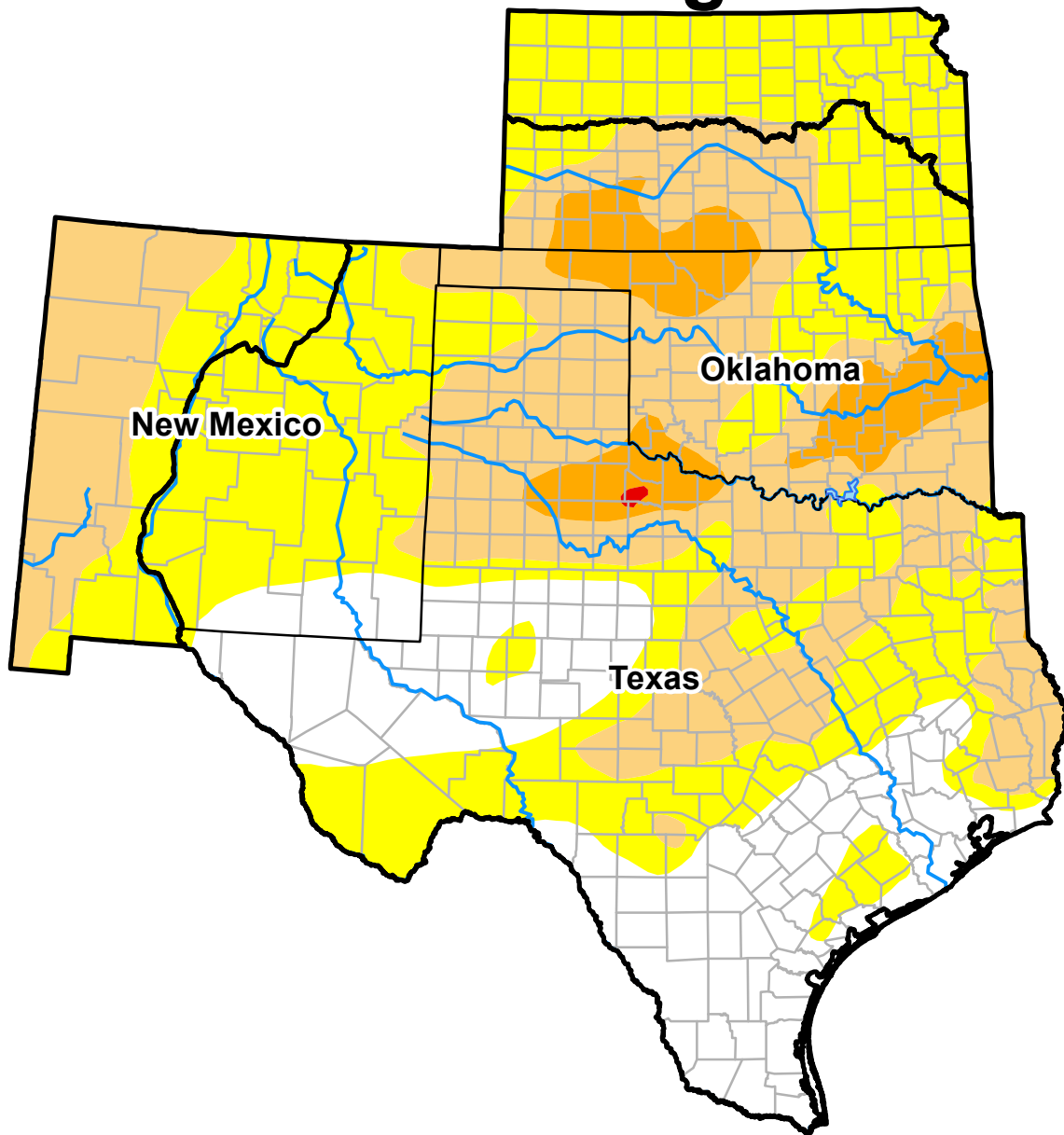


U.S. Drought Monitor

Southern Plains RDEWS and Surrounding Areas

December 26, 2017
 (Released Thursday, Dec. 28, 2017)

Valid 7 a.m. EST



Drought Conditions (Percent Area)

	None	D0	D1	D2	D3	D4
Current	19.89	42.25	31.45	6.35	0.05	0.00
Last Week <i>12-19-2017</i>	20.13	46.13	24.27	9.18	0.28	0.00
3 Months Ago <i>09-26-2017</i>	71.42	24.89	3.47	0.23	0.00	0.00
Start of Calendar Year <i>01-03-2017</i>	58.40	22.05	9.27	9.53	0.74	0.00
Start of Water Year <i>09-26-2017</i>	71.42	24.89	3.47	0.23	0.00	0.00
One Year Ago <i>12-27-2016</i>	55.48	26.06	9.58	8.45	0.43	0.00

Intensity:

- D0 Abnormally Dry
- D1 Moderate Drought
- D2 Severe Drought
- D3 Extreme Drought
- D4 Exceptional Drought

The Drought Monitor focuses on broad-scale conditions. Local conditions may vary. See accompanying text summary for forecast statements.

Author:
 David Miskus
 NOAA/NWS/NCEP/CPC

