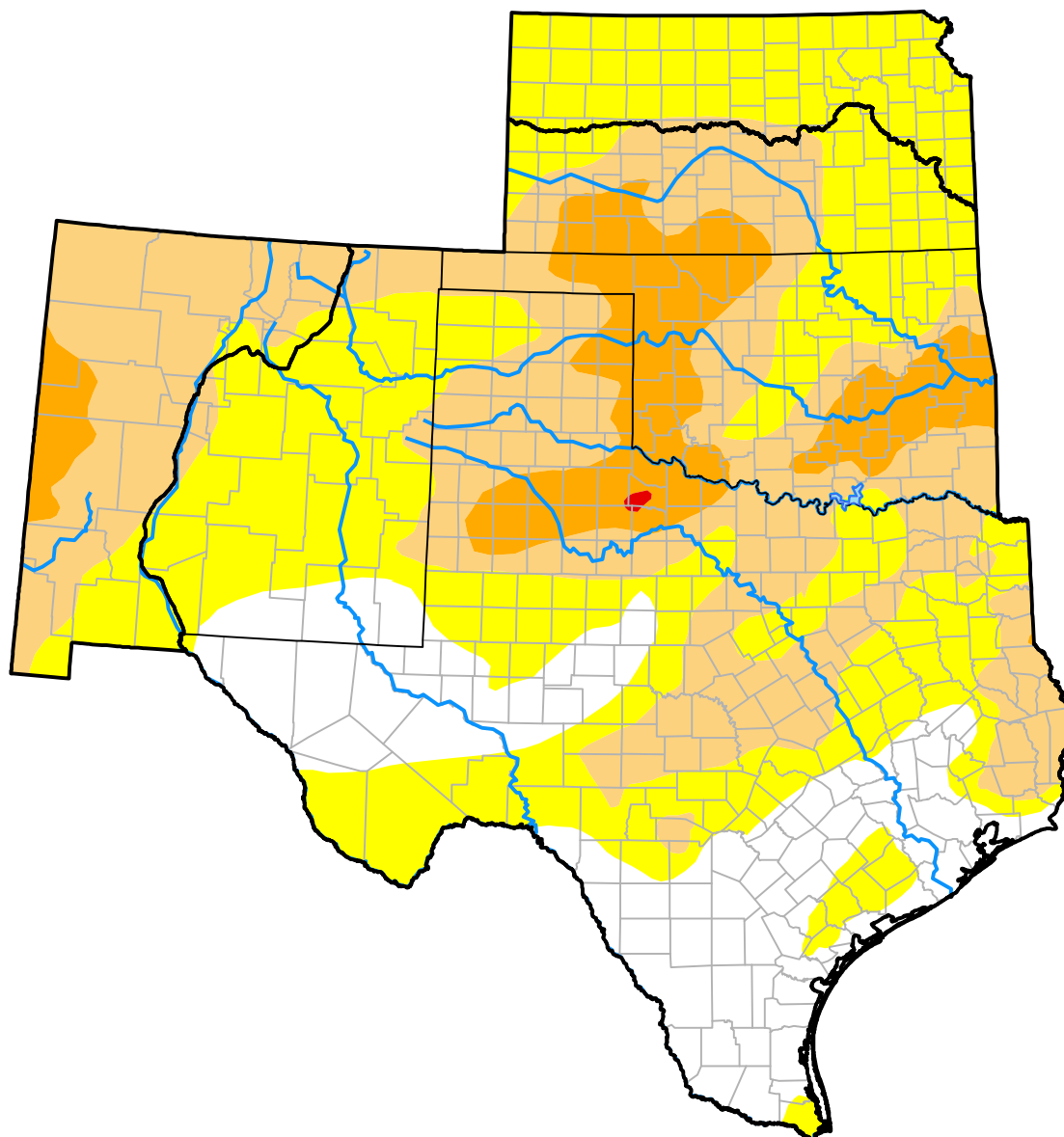


U.S. Drought Monitor

Southern Plains RDEWS

January 2, 2018
(Released Thursday, Jan. 4, 2018)
Valid 7 a.m. EST



Intensity:

-  None
-  D0 Abnormally Dry
-  D1 Moderate Drought
-  D2 Severe Drought
-  D3 Extreme Drought
-  D4 Exceptional Drought

The Drought Monitor focuses on broad-scale conditions. Local conditions may vary. For more information on the Drought Monitor, go to <https://droughtmonitor.unl.edu/About.aspx>

Author:

Eric Luebehusen
U.S. Department of Agriculture



droughtmonitor.unl.edu