

U.S. Drought Monitor

Lower Mississippi Watershed

January 9, 2018

(Released Thursday, Jan. 11, 2018)

Valid 7 a.m. EST

Drought Conditions (Percent Area)

| | None | D0-D4 | D1-D4 | D2-D4 | D3-D4 | D4 |
|--|-------|-------|-------|-------|-------|------|
| Current | 36.95 | 63.05 | 41.14 | 17.19 | 0.00 | 0.00 |
| Last Week <i>01-04-2018</i> | 38.15 | 61.85 | 40.02 | 16.52 | 0.00 | 0.00 |
| 3 Months Ago <i>10-12-2017</i> | 71.29 | 28.71 | 0.65 | 0.00 | 0.00 | 0.00 |
| Start of Calendar Year <i>01-04-2018</i> | 38.15 | 61.85 | 40.02 | 16.52 | 0.00 | 0.00 |
| Start of Water Year <i>09-28-2017</i> | 88.20 | 11.80 | 0.00 | 0.00 | 0.00 | 0.00 |
| One Year Ago <i>01-12-2017</i> | 48.10 | 51.90 | 26.84 | 0.00 | 0.00 | 0.00 |

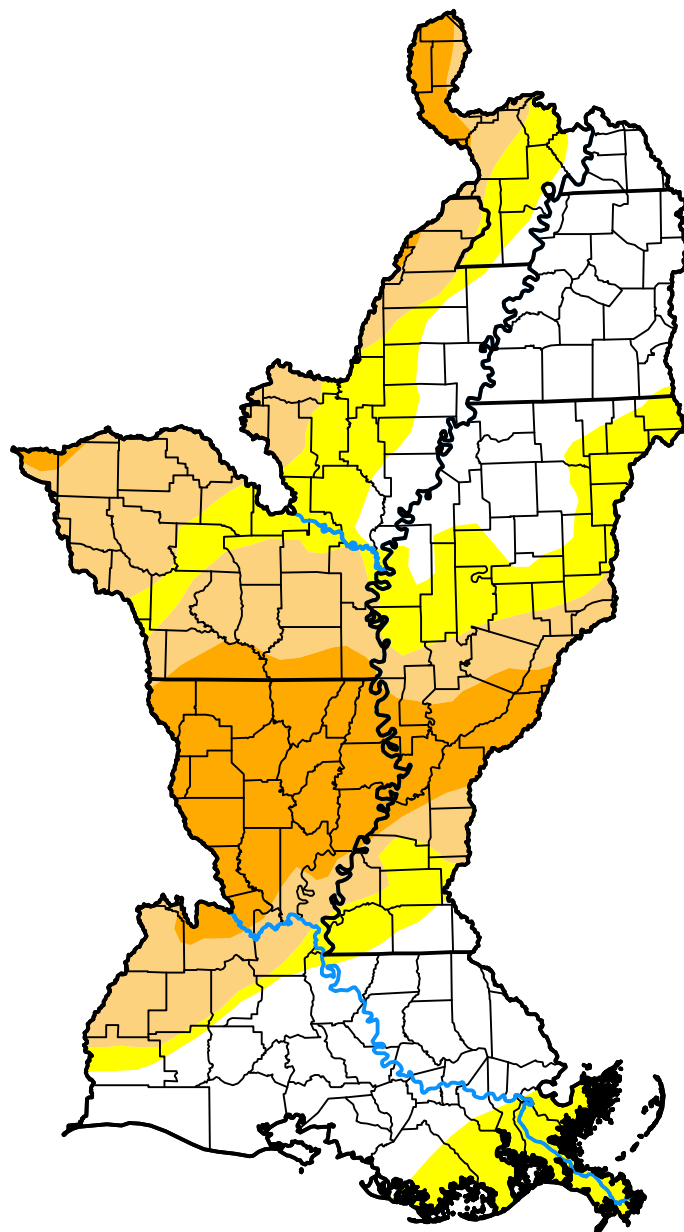
Intensity:

| | |
|---|--|
|  None |  D2 Severe Drought |
|  D0 Abnormally Dry |  D3 Extreme Drought |
|  D1 Moderate Drought |  D4 Exceptional Drought |

The Drought Monitor focuses on broad-scale conditions. Local conditions may vary. For more information on the Drought Monitor, go to <https://droughtmonitor.unl.edu/About.aspx>

Author:

Brian Fuchs
National Drought Mitigation Center



droughtmonitor.unl.edu