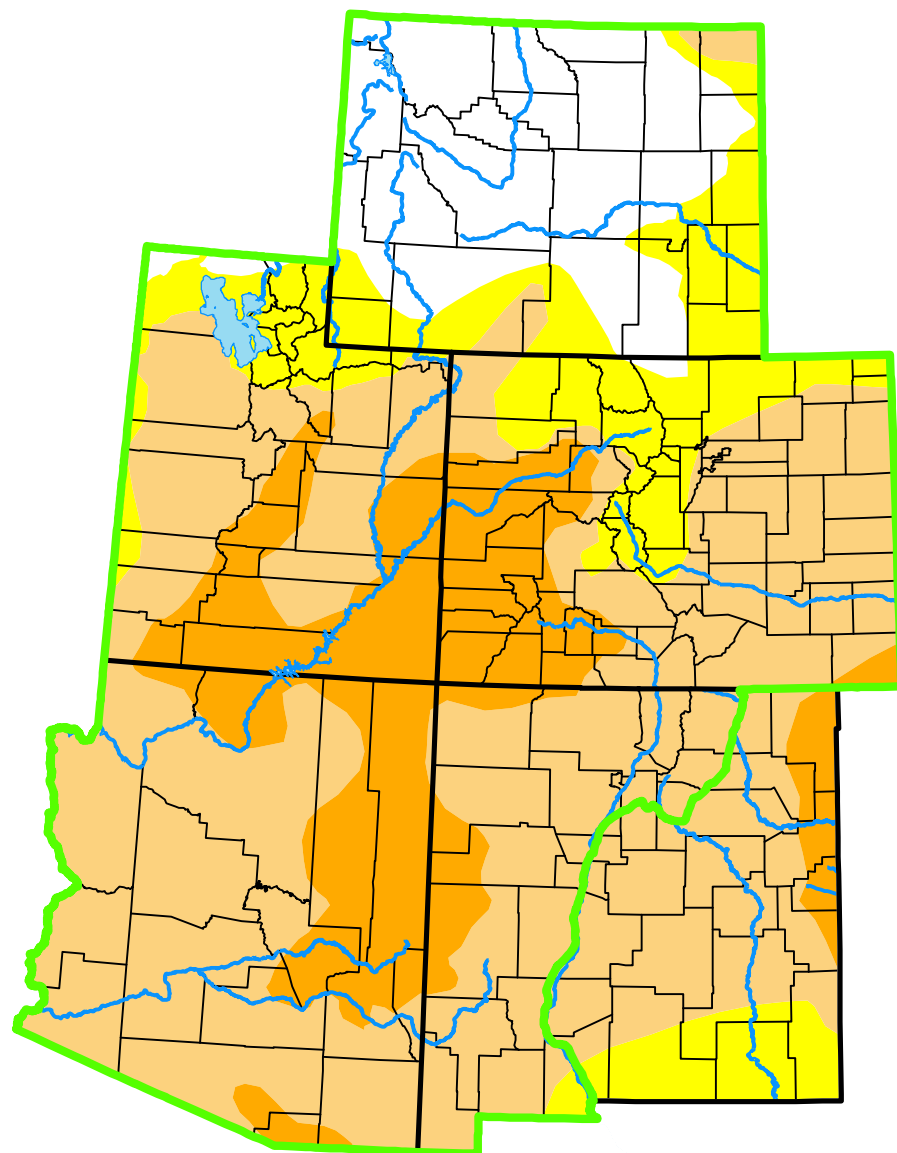


# U.S. Drought Monitor

## Intermountain West DEWS and Surrounding Areas



**January 16, 2018**

*(Released Thursday, Jan. 18, 2018)*

Valid 7 a.m. EST

*Drought Conditions (Percent Area)*

	None	D0	D1	D2	D3	D4
<b>Current</b>	15.64	14.28	50.18	19.90	0.00	0.00
<b>Last Week</b> <i>01-09-2018</i>	17.89	12.50	50.97	18.64	0.00	0.00
<b>3 Months Ago</b> <i>10-17-2017</i>	63.53	31.82	4.65	0.00	0.00	0.00
<b>Start of Calendar Year</b> <i>01-02-2018</i>	19.30	25.94	41.10	13.66	0.00	0.00
<b>Start of Water Year</b> <i>09-26-2017</i>	61.94	32.66	5.39	0.00	0.00	0.00
<b>One Year Ago</b> <i>01-17-2017</i>	54.92	28.45	15.39	1.23	0.00	0.00

(Statistics for area highlighted in green)

### Intensity:

None	D2 Severe Drought
D0 Abnormally Dry	D3 Extreme Drought
D1 Moderate Drought	D4 Exceptional Drought

*The Drought Monitor focuses on broad-scale conditions. Local conditions may vary. For more information on the Drought Monitor, go to <https://droughtmonitor.unl.edu/About.aspx>*

### Author:

Brian Fuchs  
National Drought Mitigation Center



**droughtmonitor.unl.edu**