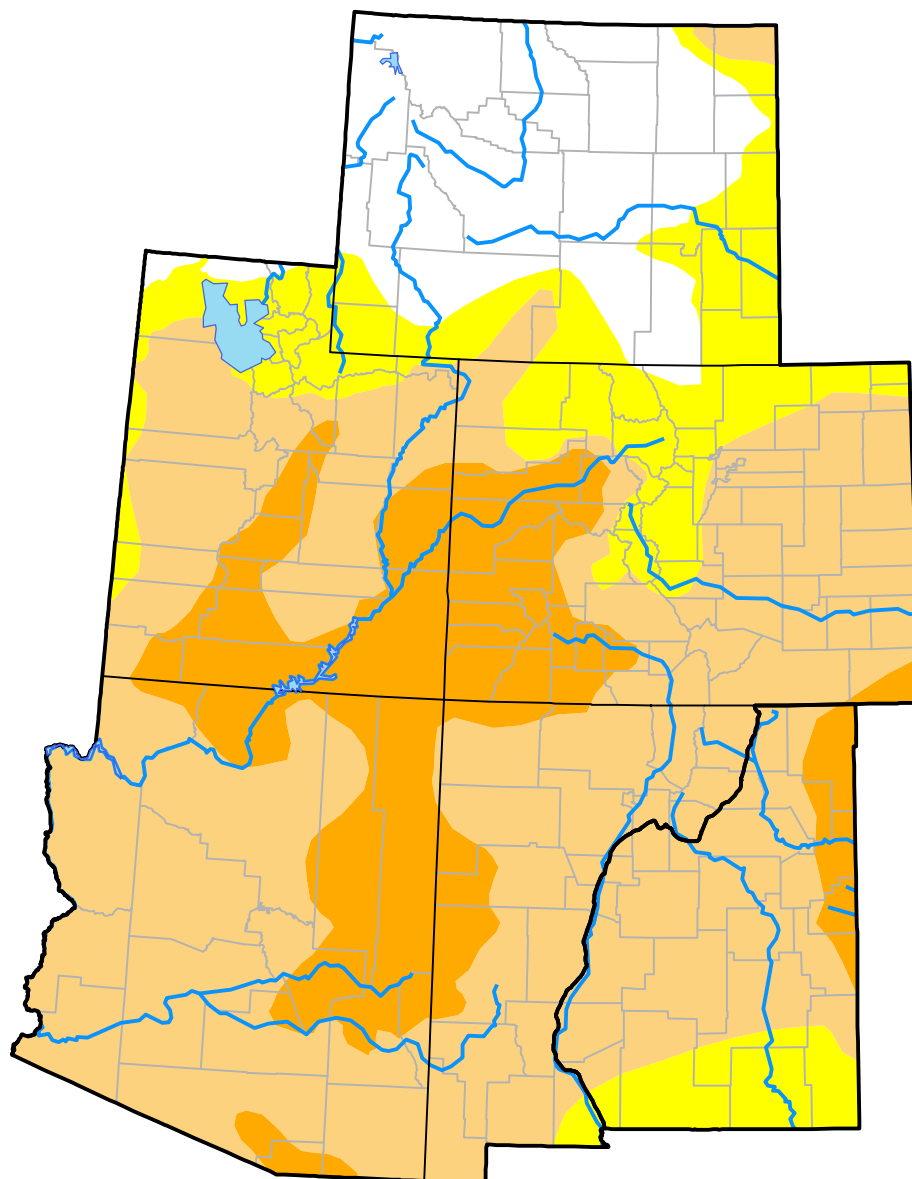


U.S. Drought Monitor

Intermountain West RDEWS

January 16, 2018
(Released Thursday, Jan. 18, 2018)
Valid 7 a.m. EST



Intensity:



The Drought Monitor focuses on broad-scale conditions. Local conditions may vary. For more information on the Drought Monitor, go to <https://droughtmonitor.unl.edu/About.aspx>

Author:

Brian Fuchs
National Drought Mitigation Center



droughtmonitor.unl.edu