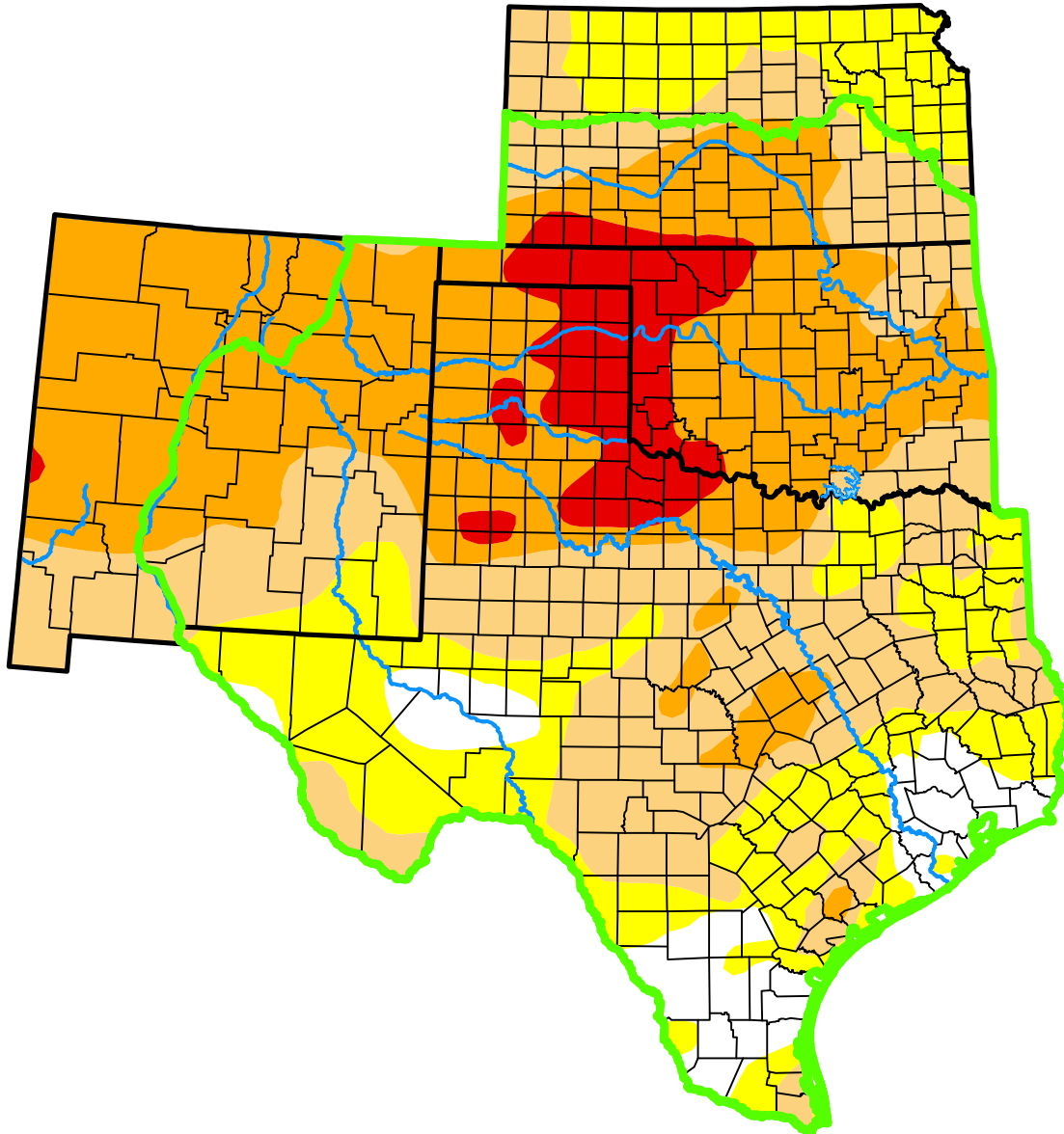


U.S. Drought Monitor

Southern Plains DEWS and Surrounding Areas

January 30, 2018
 (Released Thursday, Feb. 1, 2018)
 Valid 7 a.m. EST



Drought Conditions (Percent Area)

	None	D0	D1	D2	D3	D4
Current	8.00	20.21	32.20	31.05	8.56	0.00
Last Week <i>01-23-2018</i>	8.73	25.59	37.53	22.51	5.64	0.00
3 Months Ago <i>10-31-2017</i>	77.35	20.58	2.01	0.07	0.00	0.00
Start of Calendar Year <i>01-02-2018</i>	22.04	38.04	28.55	11.30	0.07	0.00
Start of Water Year <i>09-26-2017</i>	72.38	24.10	3.37	0.15	0.00	0.00
One Year Ago <i>01-31-2017</i>	71.25	10.26	11.67	6.19	0.62	0.00

(Statistics for area highlighted in green)

Intensity:

- None
- D0 Abnormally Dry
- D1 Moderate Drought
- D2 Severe Drought
- D3 Extreme Drought
- D4 Exceptional Drought

The Drought Monitor focuses on broad-scale conditions. Local conditions may vary. For more information on the Drought Monitor, go to <https://droughtmonitor.unl.edu/About.aspx>

Author:

Richard Heim
 NCEI/NOAA

