

U.S. Drought Monitor

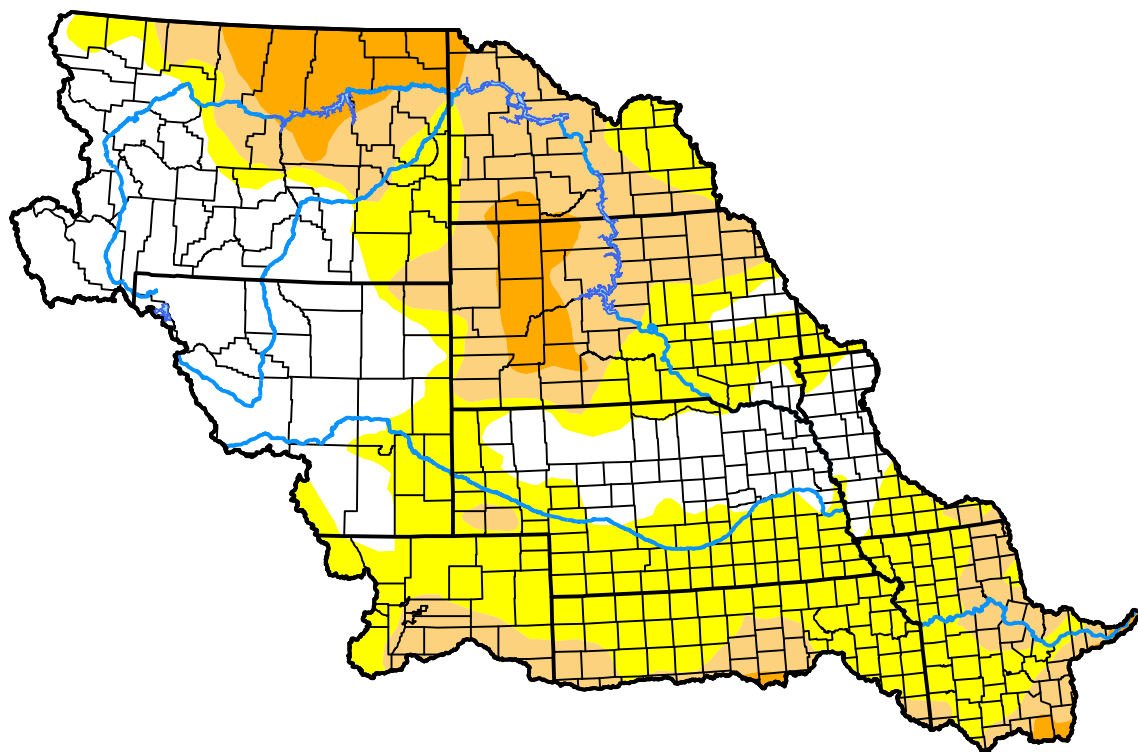
Missouri Watershed

February 6, 2018
 (Released Thursday, Feb. 8, 2018)

Valid 7 a.m. EST

Drought Conditions (Percent Area)

	None	D0-D4	D1-D4	D2-D4	D3-D4	D4
Current	31.41	68.59	31.28	7.59	0.00	0.00
Last Week <i>02-01-2018</i>	31.33	68.67	32.30	7.59	0.00	0.00
3 Months Ago <i>11-09-2017</i>	56.24	43.76	28.25	12.12	4.43	0.00
Start of Calendar Year <i>01-04-2018</i>	22.90	77.10	29.23	11.42	4.42	0.00
Start of Water Year <i>09-28-2017</i>	45.50	54.50	38.62	25.11	13.60	5.11
One Year Ago <i>02-09-2017</i>	64.45	35.55	12.46	0.03	0.00	0.00



Intensity:

- None
- D0 Abnormally Dry
- D1 Moderate Drought
- D2 Severe Drought
- D3 Extreme Drought
- D4 Exceptional Drought

The Drought Monitor focuses on broad-scale conditions. Local conditions may vary. For more information on the Drought Monitor, go to <https://droughtmonitor.unl.edu/About.aspx>

Author:

Eric Luebehusen
 U.S. Department of Agriculture



droughtmonitor.unl.edu