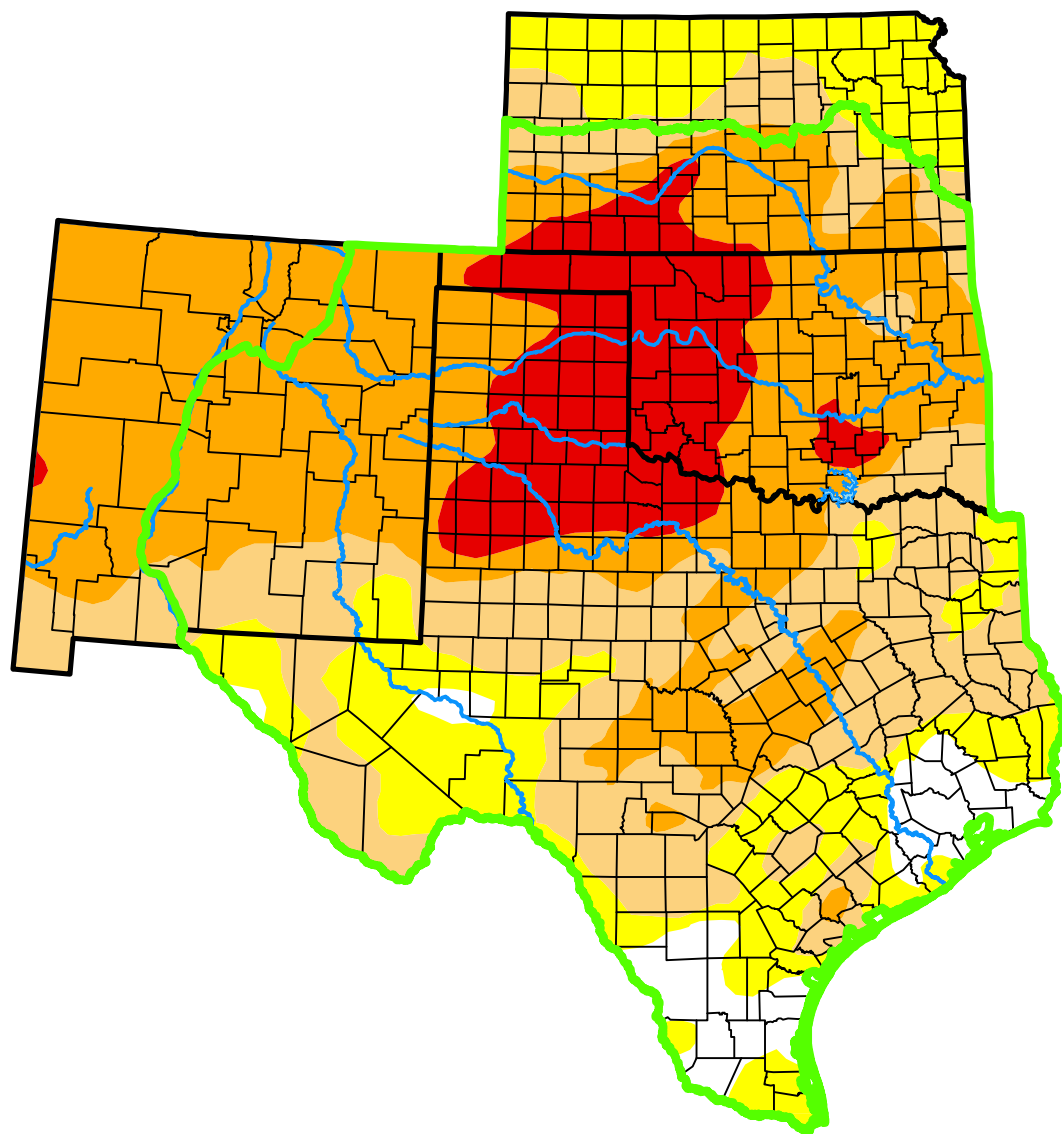


*U.S. Drought Monitor*

# Southern Plains DEWS and Surrounding Areas

**February 6, 2018**  
(Released Thursday, Feb. 8, 2018)  
Valid 7 a.m. EST



*Intensity:*



*The Drought Monitor focuses on broad-scale conditions. Local conditions may vary. For more information on the Drought Monitor, go to <https://droughtmonitor.unl.edu/About.aspx>*

*Author:*

Eric Luebehusen  
U.S. Department of Agriculture



[droughtmonitor.unl.edu](https://droughtmonitor.unl.edu)