

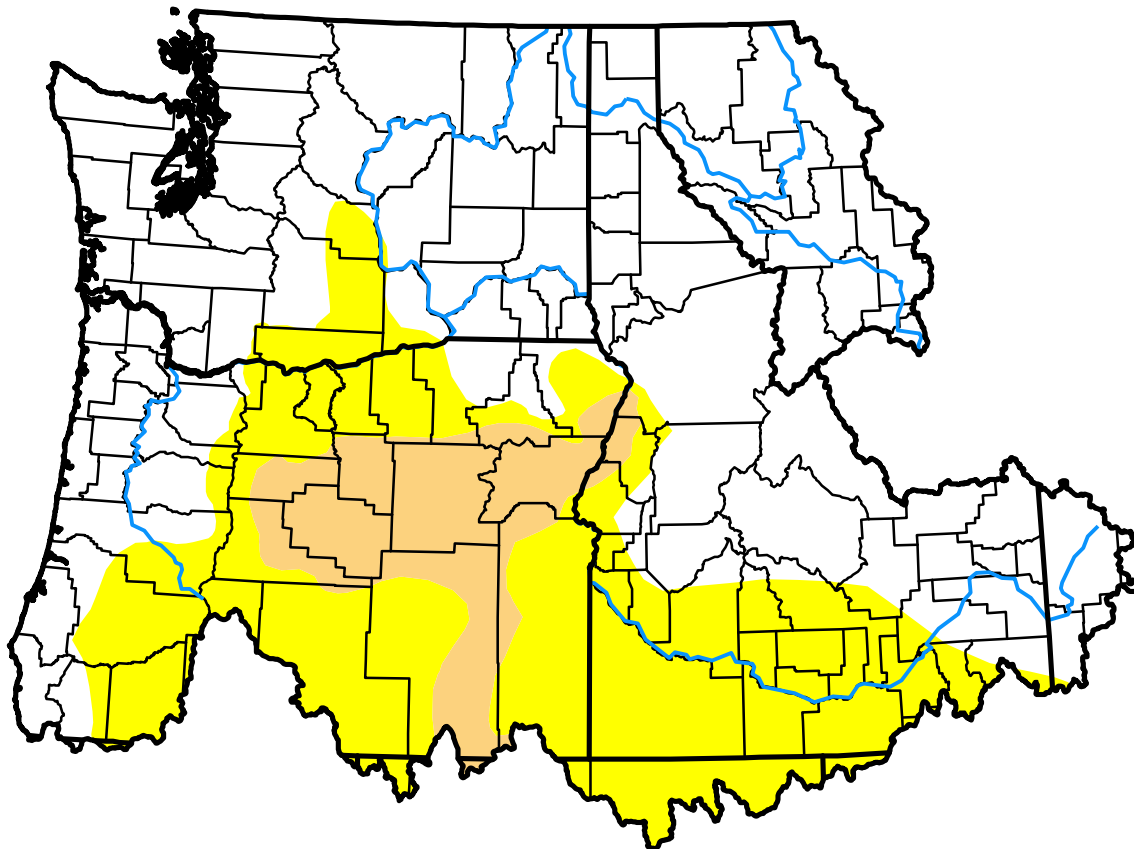
# U.S. Drought Monitor Northwest RFC

**February 13, 2018**  
(Released Thursday, Feb. 15, 2018)

Valid 7 a.m. EST

## Drought Conditions (Percent Area)

	None	D0	D1	D2	D3	D4
<b>Current</b>	60.29	30.86	8.86	0.00	0.00	0.00
<b>Last Week</b> <i>02-06-2018</i>	61.84	30.60	7.56	0.00	0.00	0.00
<b>3 Months Ago</b> <i>11-14-2017</i>	78.73	18.84	2.43	0.00	0.00	0.00
<b>Start of Calendar Year</b> <i>01-02-2018</i>	100.00	0.00	0.00	0.00	0.00	0.00
<b>Start of Water Year</b> <i>09-26-2017</i>	26.97	33.00	33.96	6.08	0.00	0.00
<b>One Year Ago</b> <i>02-14-2017</i>	91.04	7.02	1.94	0.00	0.00	0.00



### Intensity:

- D0 Abnormally Dry
- D1 Moderate Drought
- D2 Severe Drought
- D3 Extreme Drought
- D4 Exceptional Drought

*The Drought Monitor focuses on broad-scale conditions. Local conditions may vary. See accompanying text summary for forecast statements.*

### Author:

Eric Luebehusen  
U.S. Department of Agriculture



<http://droughtmonitor.unl.edu/>