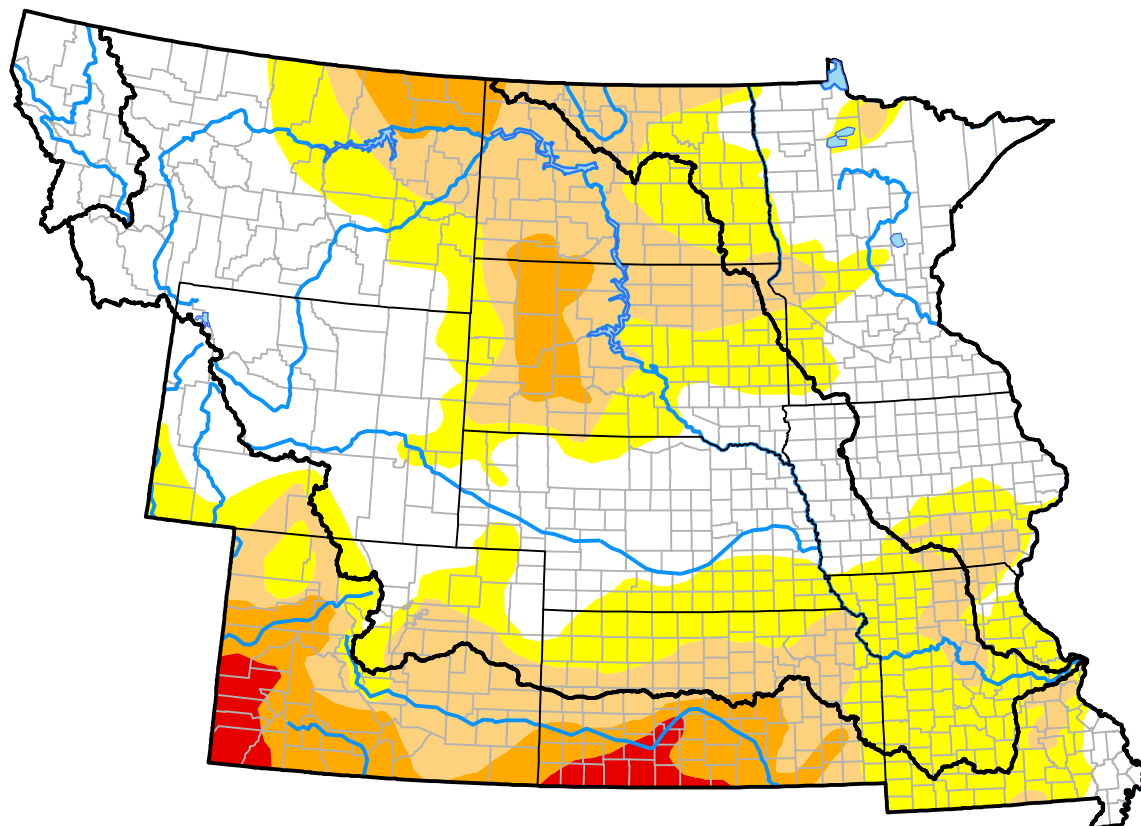


U.S. Drought Monitor

Missouri River Basin RDEWS

February 27, 2018
 (Released Thursday, Mar. 1, 2018)
 Valid 7 a.m. EST



Drought Conditions (Percent Area)

	None	D0	D1	D2	D3	D4
Current	44.84	29.36	20.97	4.84	0.00	0.00
Last Week <i>02-22-2018</i>	39.60	30.29	24.97	5.13	0.01	0.00
3 Months Ago <i>11-30-2017</i>	52.68	17.29	17.67	7.93	4.42	0.00
Start of Calendar Year <i>01-04-2018</i>	22.97	47.85	17.77	6.99	4.41	0.00
Start of Water Year <i>09-28-2017</i>	45.44	15.87	13.50	11.62	8.48	5.09
One Year Ago <i>03-02-2017</i>	65.12	17.22	17.62	0.04	0.00	0.00

Intensity:



The Drought Monitor focuses on broad-scale conditions. Local conditions may vary. For more information on the Drought Monitor, go to <https://droughtmonitor.unl.edu/About.aspx>

Author:

Deborah Bathke
 National Drought Mitigation Center

