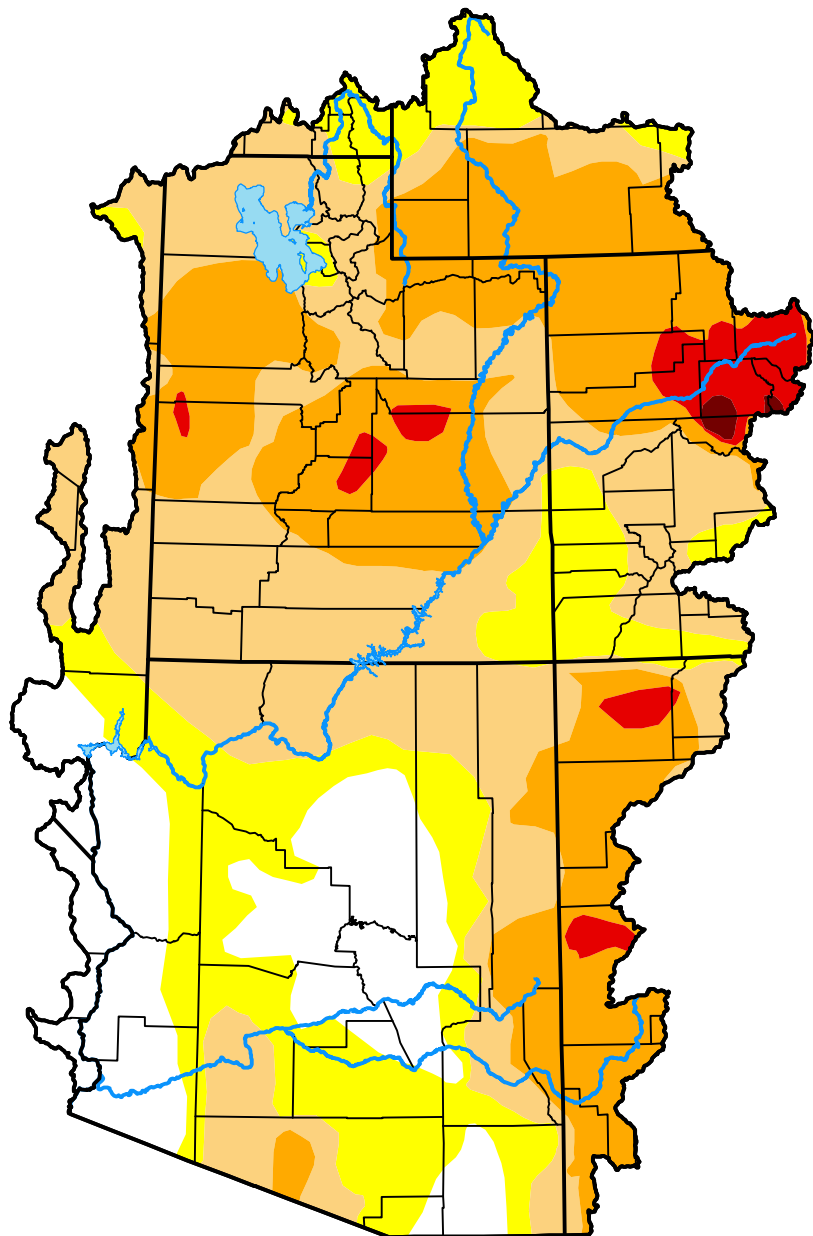


U.S. Drought Monitor

Colorado Basin RFC

February 3, 2026
 (Released Thursday, Feb. 5, 2026)
 Valid 7 a.m. EST



Drought Conditions (Percent Area)

	None	D0	D1	D2	D3	D4
Current	14.41	20.67	34.05	27.51	3.13	0.22
Last Week <i>01-27-2026</i>	14.41	20.69	34.24	27.80	2.64	0.22
3 Months Ago <i>11-04-2025</i>	1.48	6.54	34.94	46.40	10.64	0.00
Start of Calendar Year <i>01-06-2026</i>	12.87	18.66	36.50	28.58	3.17	0.22
Start of Water Year <i>09-30-2025</i>	0.00	0.22	17.76	54.92	25.76	1.33
One Year Ago <i>02-04-2025</i>	3.11	23.35	34.46	17.55	20.53	1.01

Intensity:



The Drought Monitor focuses on broad-scale conditions. Local conditions may vary. For more information on the Drought Monitor, go to <https://droughtmonitor.unl.edu/About.aspx>

Author:

Lindsay Johnson
 National Drought Mitigation Center

