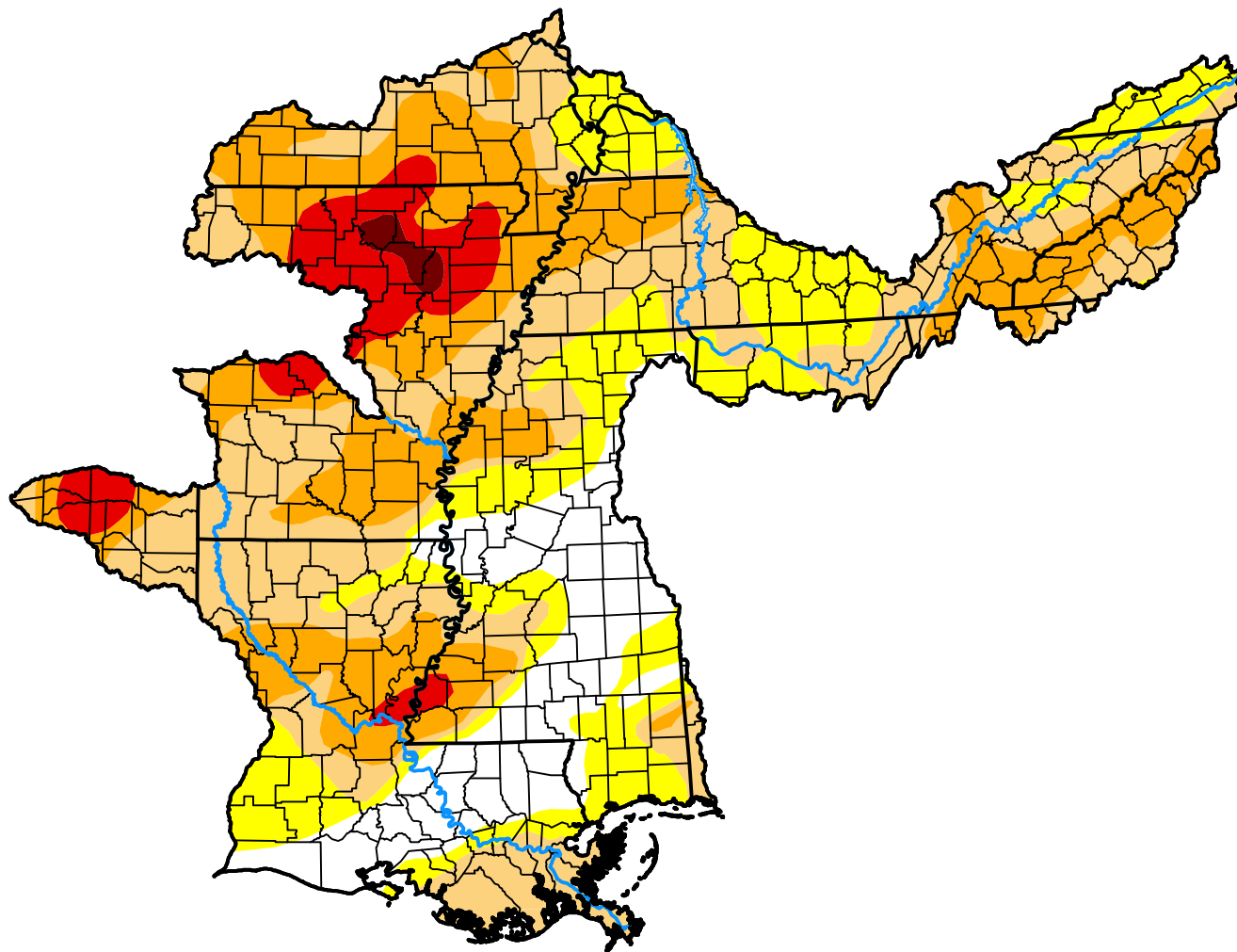


U.S. Drought Monitor

Lower Mississippi RFC

February 3, 2026
(Released Thursday, Feb. 5, 2026)
Valid 7 a.m. EST



Intensity:



The Drought Monitor focuses on broad-scale conditions. Local conditions may vary. For more information on the Drought Monitor, go to <https://droughtmonitor.unl.edu/About.aspx>

Author:

Lindsay Johnson
National Drought Mitigation Center



droughtmonitor.unl.edu