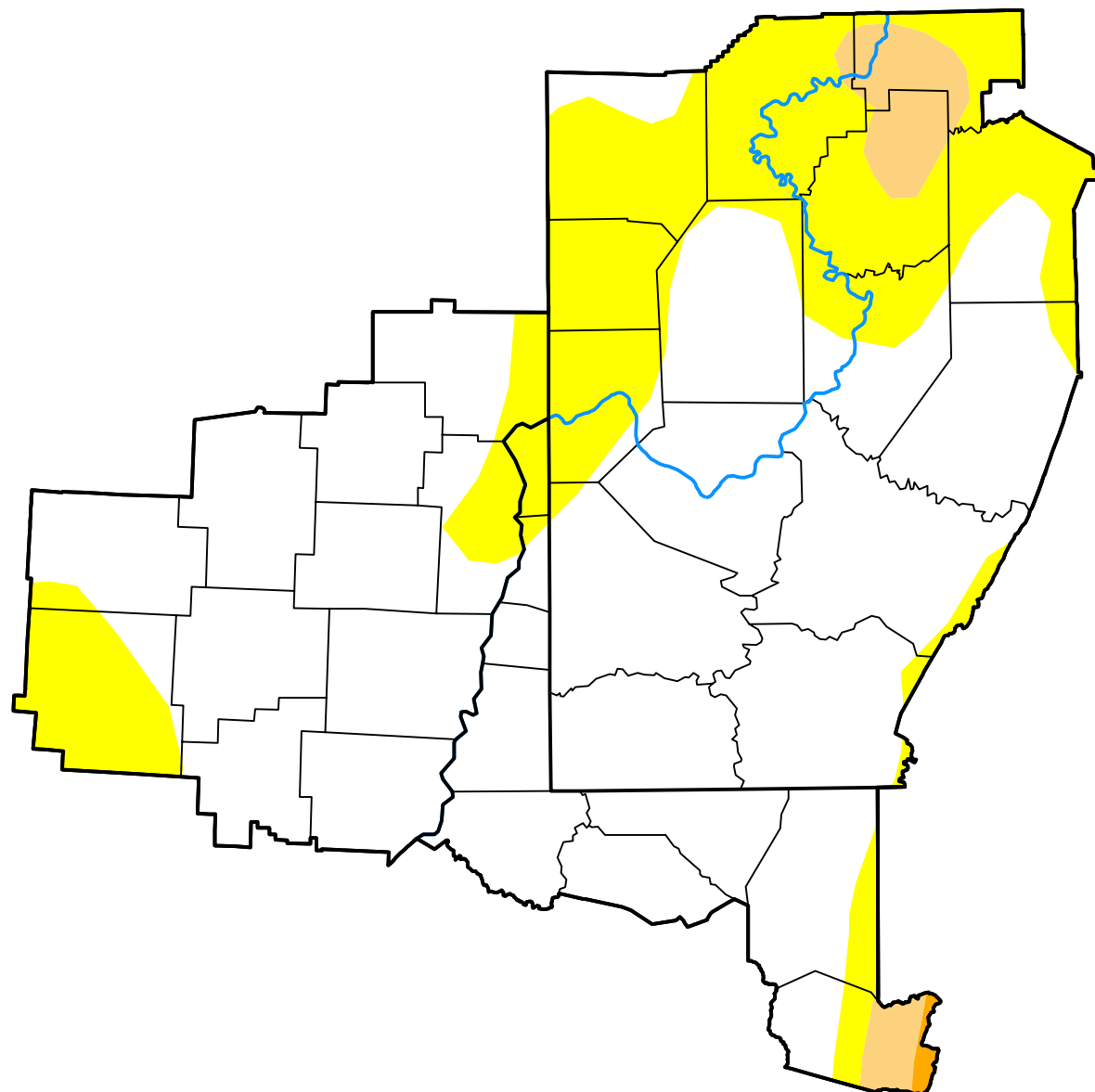








U.S. Drought Monitor
Pittsburgh, PA WFO

February 3, 2026
(Released Thursday, Feb. 5, 2026)
Valid 7 a.m. EST



Intensity:

- | | |
|---|------------------------|
|  | None |
|  | D0 Abnormally Dry |
|  | D1 Moderate Drought |
|  | D2 Severe Drought |
|  | D3 Extreme Drought |
|  | D4 Exceptional Drought |

The Drought Monitor focuses on broad-scale conditions. Local conditions may vary. For more information on the Drought Monitor, go to <https://droughtmonitor.unl.edu/About.aspx>

Author:

Lindsay Johnson
National Drought Mitigation Center



droughtmonitor.unl.edu