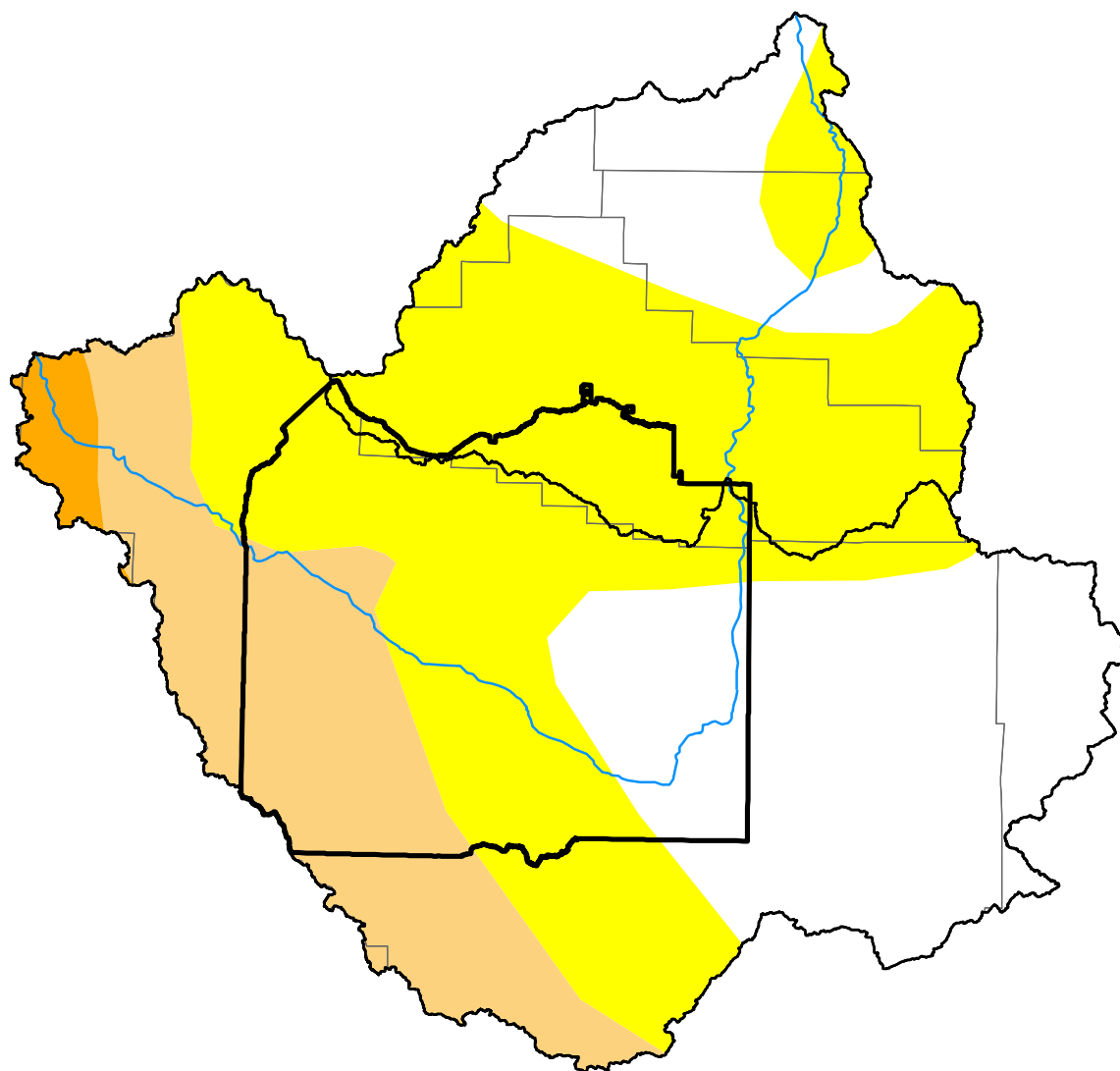


# U.S. Drought Monitor

## Wind River and Surrounding Area

**December 9, 2025**  
 (Released Thursday, Dec. 11, 2025)  
 Valid 7 a.m. EST



*Drought Conditions (Percent Area)*

	None	D0	D1	D2	D3	D4
<b>Current</b>	33.49	46.49	18.35	1.67	0.00	0.00
<b>Last Week</b> 12-02-2025	33.49	46.49	18.35	1.67	0.00	0.00
<b>3 Months Ago</b> 09-09-2025	5.56	63.34	25.31	4.41	1.37	0.00
<b>Start of Calendar Year</b> 01-07-2025	0.00	0.00	5.68	89.94	4.38	0.00
<b>Start of Water Year</b> 09-30-2025	6.67	59.79	27.89	4.27	1.37	0.00
<b>One Year Ago</b> 12-10-2024	0.00	0.00	10.82	85.36	3.82	0.00

*Note: Statistics are for the surrounding area including the reservation.*

### Intensity:

None	D2 Severe Drought
D0 Abnormally Dry	D3 Extreme Drought
D1 Moderate Drought	D4 Exceptional Drought

*The Drought Monitor focuses on broad-scale conditions. Local conditions may vary. For more information on the Drought Monitor, go to <https://droughtmonitor.unl.edu/About.aspx>*

### Author:

Lindsay Johnson  
 National Drought Mitigation Center



<http://droughtmonitor.unl.edu/>