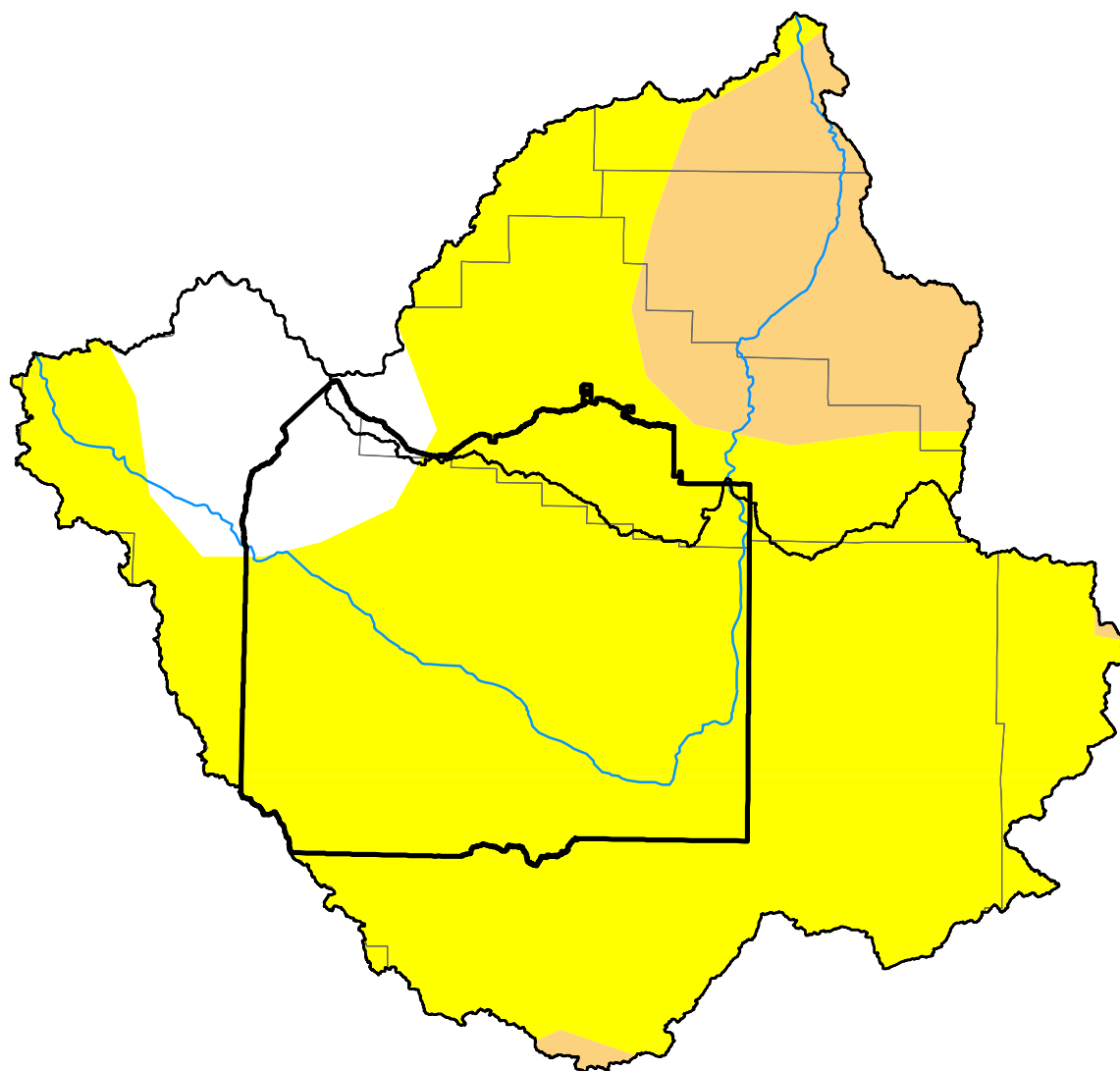


# U.S. Drought Monitor

## Wind River and Surrounding Area

**February 3, 2026**  
 (Released Thursday, Feb. 5, 2026)  
 Valid 7 a.m. EST



*Drought Conditions (Percent Area)*

	None	D0-D4	D1-D4	D2-D4	D3-D4	D4
<b>Current</b>	8.74	91.26	13.76	0.00	0.00	0.00
<b>Last Week</b> <i>01-27-2026</i>	14.42	85.58	7.77	0.00	0.00	0.00
<b>3 Months Ago</b> <i>11-04-2025</i>	18.83	81.17	20.33	1.67	0.00	0.00
<b>Start of Calendar Year</b> <i>01-06-2026</i>	48.24	51.76	0.32	0.00	0.00	0.00
<b>Start of Water Year</b> <i>09-30-2025</i>	6.67	93.33	33.54	5.65	1.37	0.00
<b>One Year Ago</b> <i>02-04-2025</i>	0.00	100.00	100.00	75.46	4.62	0.00

*Note: Statistics are for the surrounding area including the reservation.*

### Intensity:

None	D2 Severe Drought
D0 Abnormally Dry	D3 Extreme Drought
D1 Moderate Drought	D4 Exceptional Drought

*The Drought Monitor focuses on broad-scale conditions. Local conditions may vary. For more information on the Drought Monitor, go to <https://droughtmonitor.unl.edu/About.aspx>*

### Author:

Lindsay Johnson  
 National Drought Mitigation Center



<http://droughtmonitor.unl.edu/>