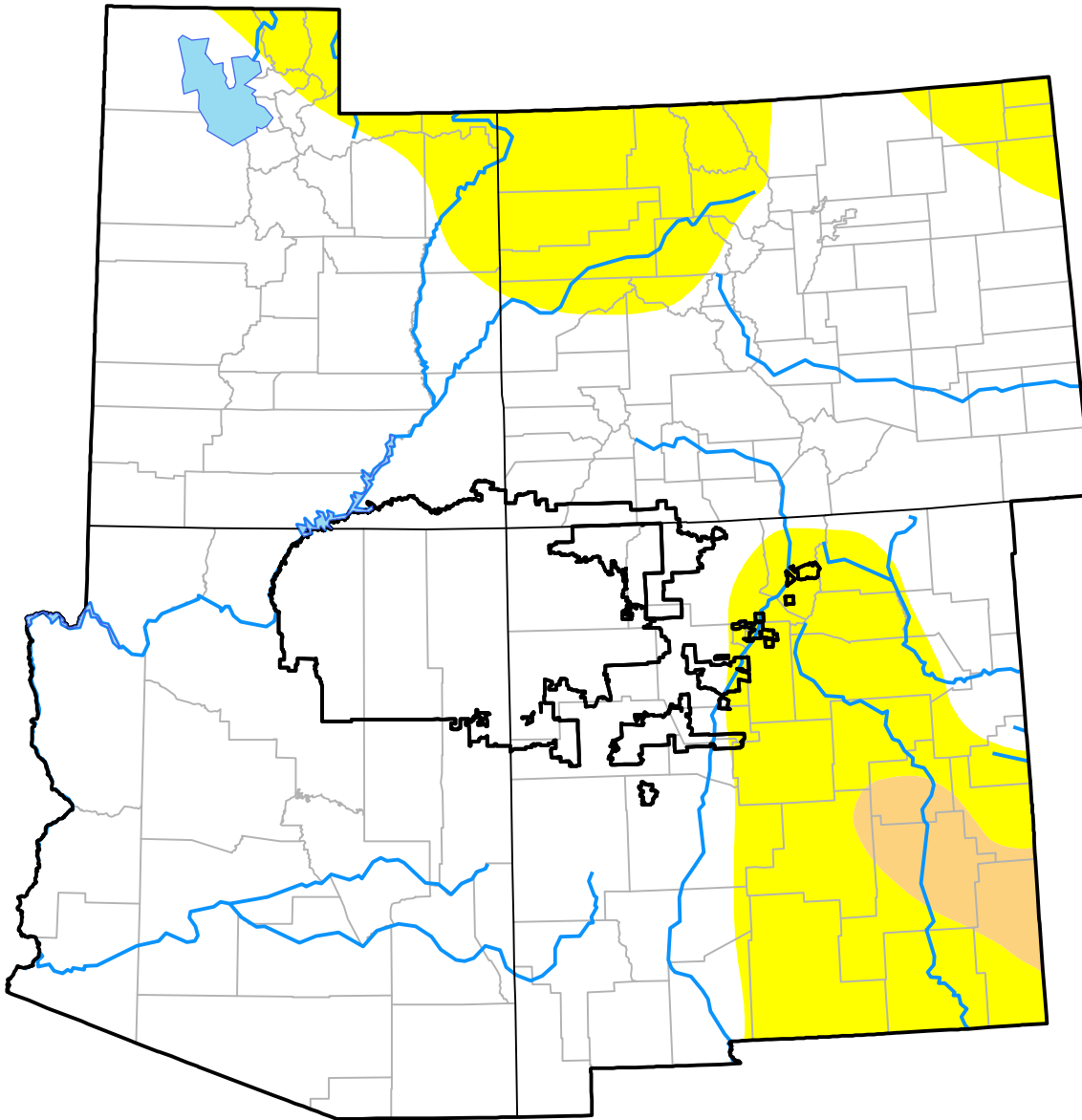


Corners RDEWS and Surrounding Areas (Released Thursday, Nov. 16, 2000) Valid 7 a.m. EST

Drought Conditions (Percent Area)

	None	D0-D4	D1-D4	D2-D4	D3-D4	D4
Current	78.56	21.44	2.01	0.00	0.00	0.00
Last Week <i>11-09-2000</i>	68.93	31.07	2.01	0.00	0.00	0.00
3 Months Ago <i>08-17-2000</i>	22.21	77.79	35.14	4.38	0.01	0.00
Start of Calendar Year <i>01-06-2000</i>	69.87	30.13	0.49	0.03	0.00	0.00
Start of Water Year <i>09-28-2000</i>	16.80	83.20	35.92	9.98	0.00	0.00
One Year Ago	-	-	-	-	-	-



Intensity:

- None
- D0 Abnormally Dry
- D1 Moderate Drought
- D2 Severe Drought
- D3 Extreme Drought
- D4 Exceptional Drought

The Drought Monitor focuses on broad-scale conditions. Local conditions may vary. For more information on the Drought Monitor, go to <https://droughtmonitor.unl.edu/About.aspx>

Author:

Staff None
National Drought Mitigation Center

