

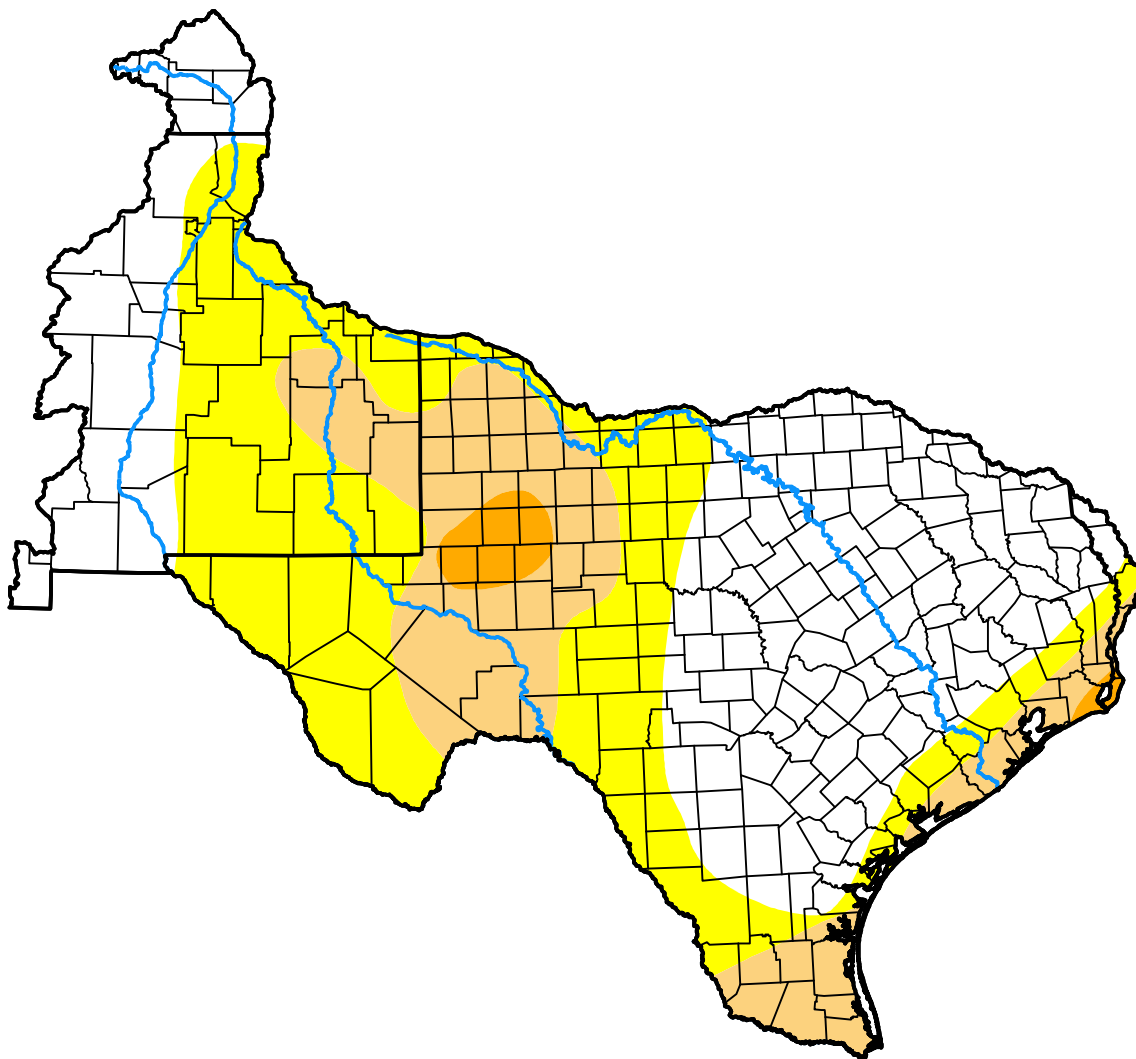
U.S. Drought Monitor West Gulf RFC

November 14, 2000
(Released Thursday, Nov. 16, 2000)

Valid 7 a.m. EST

Drought Conditions (Percent Area)

	None	D0-D4	D1-D4	D2-D4	D3-D4	D4
Current	44.68	55.32	20.90	2.03	0.00	0.00
Last Week <i>11-09-2000</i>	45.96	54.04	19.76	1.99	0.00	0.00
3 Months Ago <i>08-17-2000</i>	17.35	82.65	45.90	19.52	0.00	0.00
Start of Calendar Year <i>01-06-2000</i>	14.18	85.82	62.82	44.60	0.00	0.00
Start of Water Year <i>09-28-2000</i>	7.40	92.60	83.86	68.12	13.66	0.00
One Year Ago	-	-	-	-	-	-



Intensity:

- None
- D0 Abnormally Dry
- D1 Moderate Drought
- D2 Severe Drought
- D3 Extreme Drought
- D4 Exceptional Drought

The Drought Monitor focuses on broad-scale conditions. Local conditions may vary. For more information on the Drought Monitor, go to <https://droughtmonitor.unl.edu/About.aspx>

Author:

Staff None
National Drought Mitigation Center



droughtmonitor.unl.edu