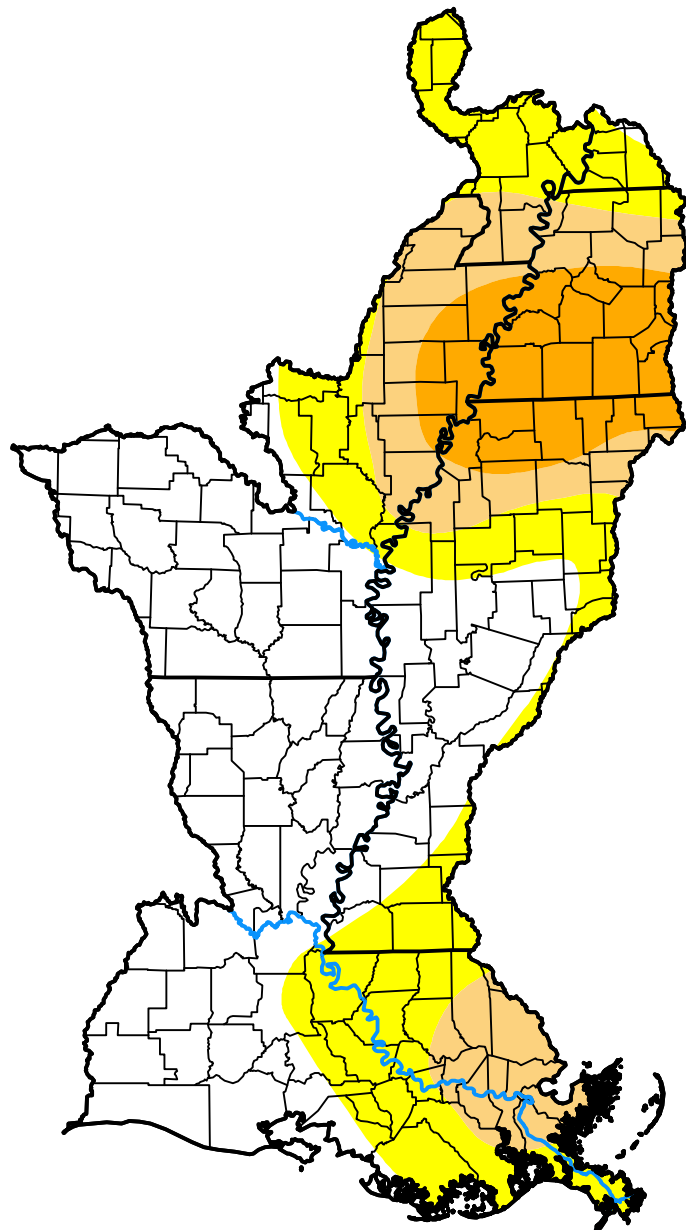


U.S. Drought Monitor

Lower Mississippi Watershed

January 9, 2001
 (Released Thursday, Jan. 11, 2001)
 Valid 7 a.m. EST



Drought Conditions (Percent Area)

	None	D0-D4	D1-D4	D2-D4	D3-D4	D4
Current	49.53	50.47	26.21	11.07	0.00	0.00
Last Week <i>01-04-2001</i>	51.29	48.71	25.64	10.44	0.00	0.00
3 Months Ago <i>10-12-2000</i>	0.16	99.84	97.61	85.54	36.14	0.00
Start of Calendar Year <i>01-04-2001</i>	51.29	48.71	25.64	10.44	0.00	0.00
Start of Water Year <i>09-28-2000</i>	0.10	99.90	97.61	90.67	66.24	0.18
One Year Ago <i>01-13-2000</i>	1.48	98.52	77.18	30.91	0.00	0.00

Intensity:



The Drought Monitor focuses on broad-scale conditions. Local conditions may vary. For more information on the Drought Monitor, go to <https://droughtmonitor.unl.edu/About.aspx>

Author:

Mark Svoboda
 National Drought Mitigation Center

