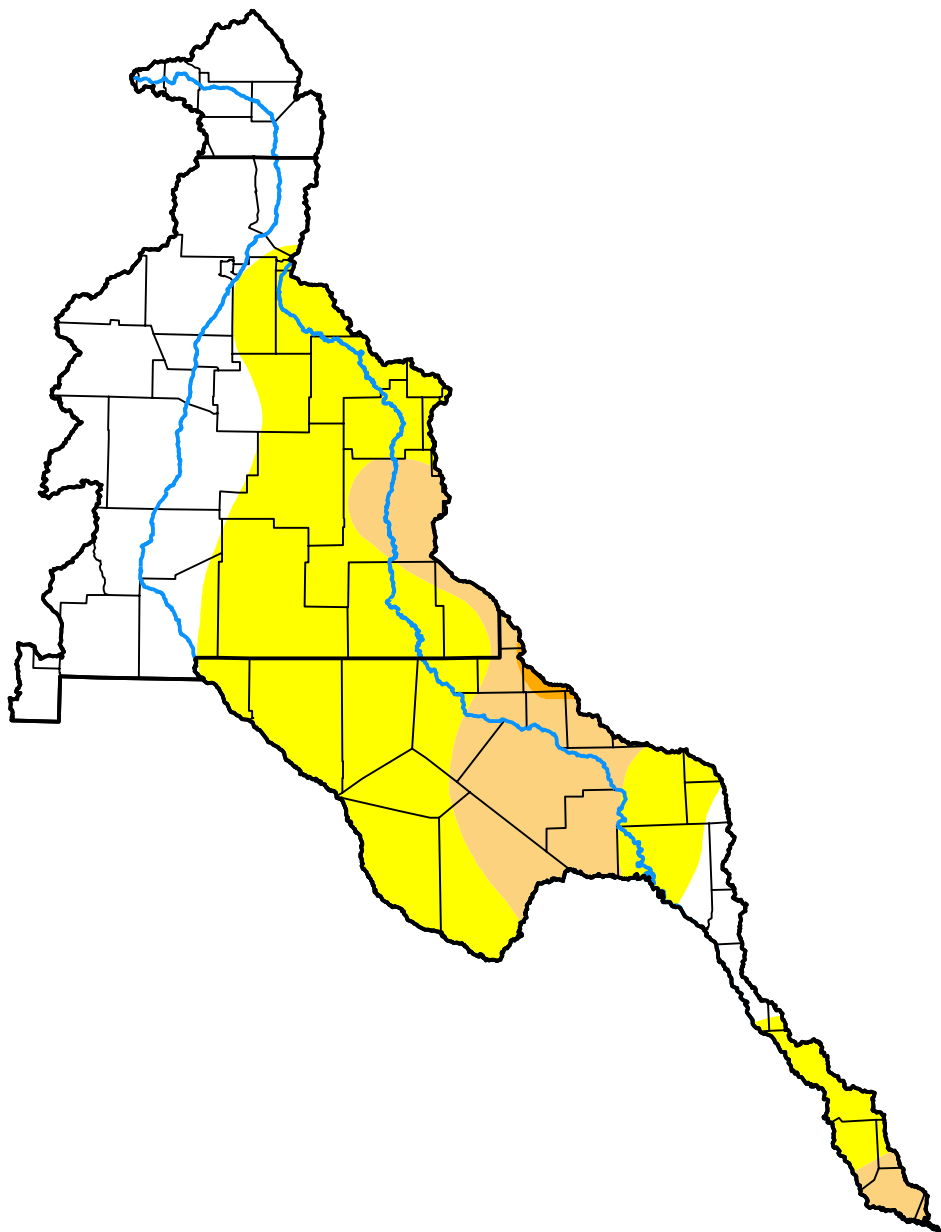


U.S. Drought Monitor

Rio Grande Watershed

January 9, 2001
 (Released Thursday, Jan. 11, 2001)

Valid 7 a.m. EST



Drought Conditions (Percent Area)

	None	D0	D1	D2	D3	D4
Current	37.71	45.86	16.07	0.36	0.00	0.00
Last Week <i>01-04-2001</i>	37.71	45.86	16.07	0.36	0.00	0.00
3 Months Ago <i>10-12-2000</i>	4.60	29.57	23.88	32.50	9.45	0.00
Start of Calendar Year <i>01-04-2001</i>	37.71	45.86	16.07	0.36	0.00	0.00
Start of Water Year <i>09-28-2000</i>	17.42	20.57	22.58	22.73	16.70	0.00
One Year Ago <i>01-13-2000</i>	0.03	68.20	4.59	27.19	0.00	0.00

Intensity:

- None
- D0 Abnormally Dry
- D1 Moderate Drought
- D2 Severe Drought
- D3 Extreme Drought
- D4 Exceptional Drought

The Drought Monitor focuses on broad-scale conditions. Local conditions may vary. For more information on the Drought Monitor, go to <https://droughtmonitor.unl.edu/About.aspx>

Author:

Mark Svoboda
 National Drought Mitigation Center



droughtmonitor.unl.edu