

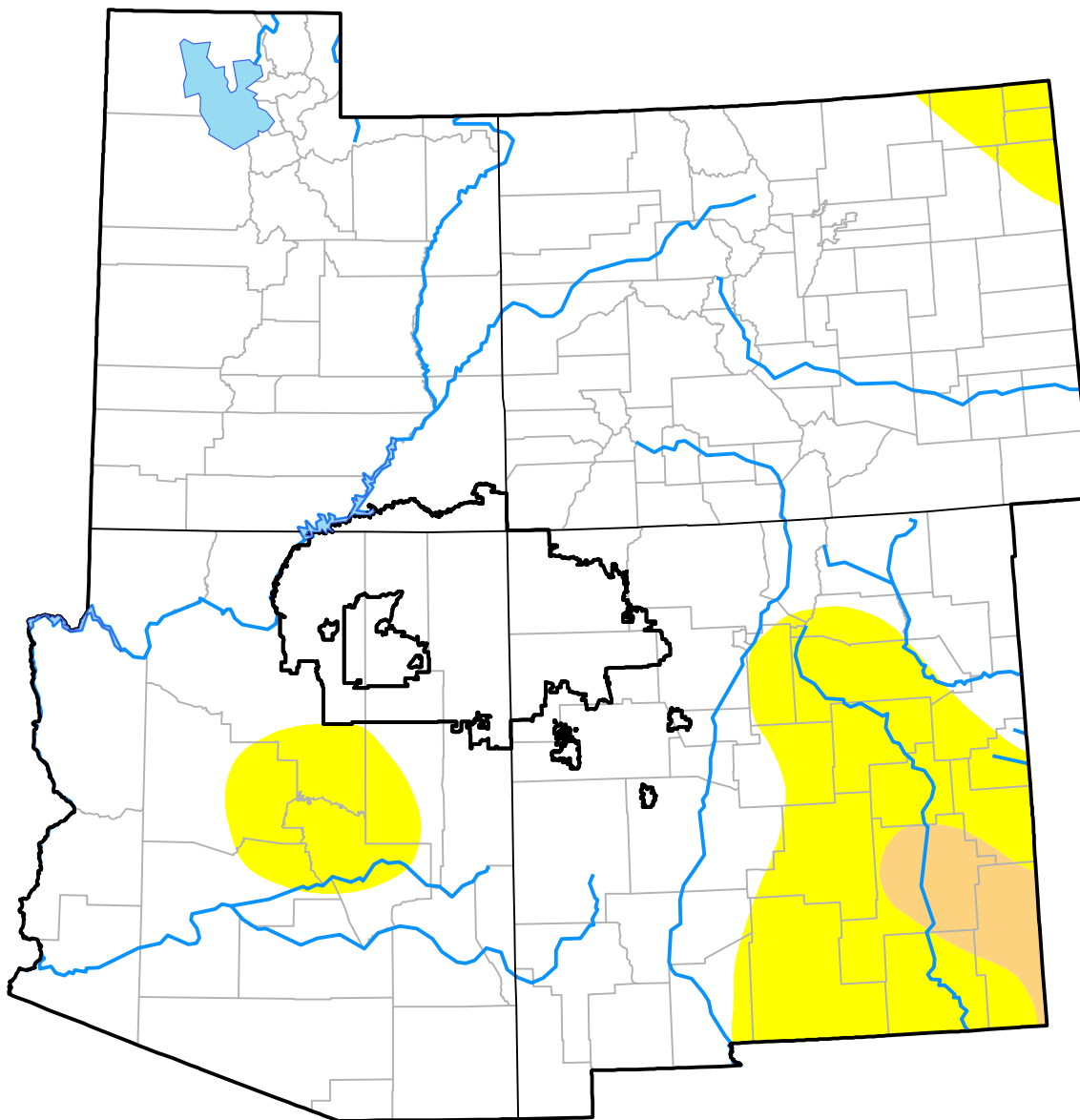
Nebraska RDEWS and Surrounding Areas

(Released Thursday, Jan. 11, 2001)

Valid 7 a.m. EST

Drought Conditions (Percent Area)

	None	D0-D4	D1-D4	D2-D4	D3-D4	D4
Current	85.37	14.63	1.76	0.00	0.00	0.00
Last Week <i>01-04-2001</i>	88.15	11.85	1.76	0.00	0.00	0.00
3 Months Ago <i>10-12-2000</i>	8.50	91.50	45.36	12.71	0.20	0.00
Start of Calendar Year <i>01-04-2001</i>	88.15	11.85	1.76	0.00	0.00	0.00
Start of Water Year <i>09-28-2000</i>	16.80	83.20	35.92	9.98	0.00	0.00
One Year Ago <i>01-13-2000</i>	27.61	72.39	0.48	0.03	0.00	0.00



Intensity:

- None
- D0 Abnormally Dry
- D1 Moderate Drought
- D2 Severe Drought
- D3 Extreme Drought
- D4 Exceptional Drought

The Drought Monitor focuses on broad-scale conditions. Local conditions may vary. For more information on the Drought Monitor, go to <https://droughtmonitor.unl.edu/About.aspx>

Author:

Mark Svoboda
National Drought Mitigation Center

