

U.S. Drought Monitor

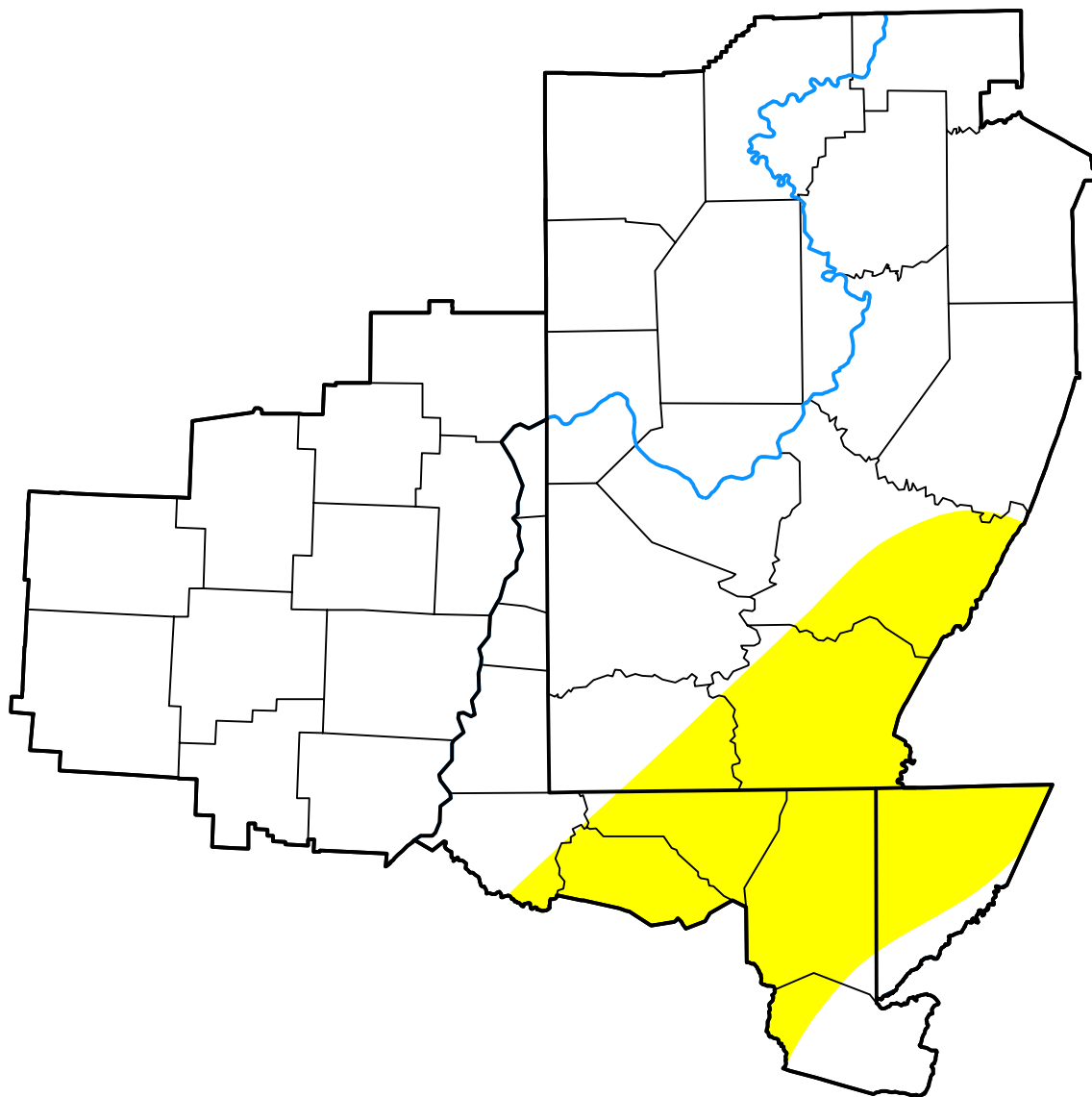
Pittsburgh, PA WFO

January 9, 2001
 (Released Thursday, Jan. 11, 2001)

Valid 7 a.m. EST

Drought Conditions (Percent Area)

	None	D0-D4	D1-D4	D2-D4	D3-D4	D4
Current	82.18	17.82	0.00	0.00	0.00	0.00
Last Week <i>01-04-2001</i>	82.18	17.82	0.00	0.00	0.00	0.00
3 Months Ago <i>10-12-2000</i>	100.00	0.00	0.00	0.00	0.00	0.00
Start of Calendar Year <i>01-04-2001</i>	82.18	17.82	0.00	0.00	0.00	0.00
Start of Water Year <i>09-28-2000</i>	100.00	0.00	0.00	0.00	0.00	0.00
One Year Ago <i>01-13-2000</i>	39.62	60.38	0.00	0.00	0.00	0.00



Intensity:

- None
- D2 Severe Drought
- D0 Abnormally Dry
- D3 Extreme Drought
- D1 Moderate Drought
- D4 Exceptional Drought

The Drought Monitor focuses on broad-scale conditions. Local conditions may vary. For more information on the Drought Monitor, go to <https://droughtmonitor.unl.edu/About.aspx>

Author:

Mark Svoboda
 National Drought Mitigation Center

