

# U.S. Drought Monitor

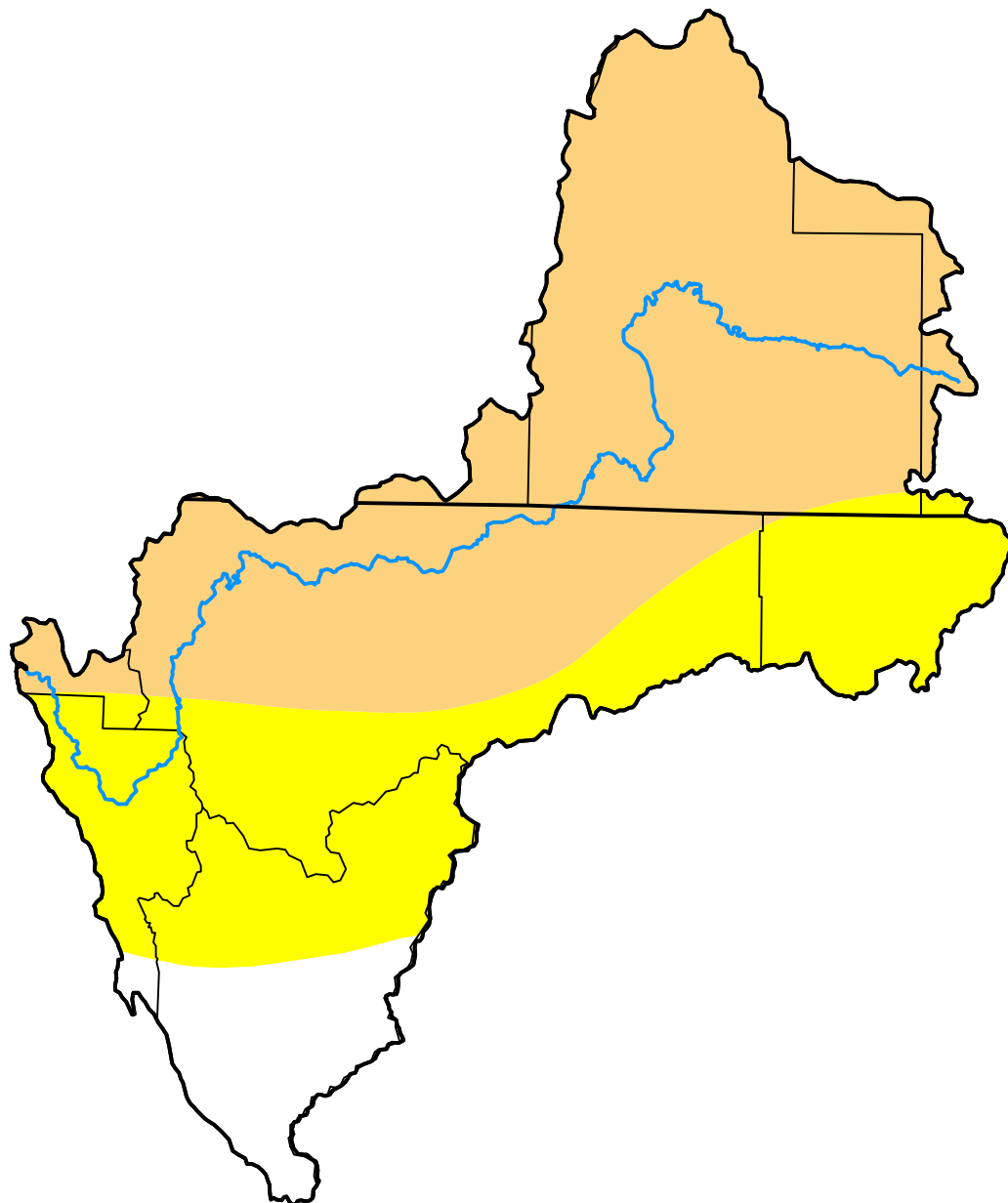
## Klamath River Basin

**February 27, 2001**  
*(Released Thursday, Mar. 1, 2001)*

Valid 7 a.m. EST

*Drought Conditions (Percent Area)*

	None	D0	D1	D2	D3	D4
<b>Current</b>	8.50	33.68	57.82	0.00	0.00	0.00
<b>Last Week</b> <i>02-20-2001</i>	0.10	48.09	51.81	0.00	0.00	0.00
<b>3 Months Ago</b> <i>11-28-2000</i>	100.00	0.00	0.00	0.00	0.00	0.00
<b>Start of Calendar Year</b> <i>01-02-2001</i>	100.00	0.00	0.00	0.00	0.00	0.00
<b>Start of Water Year</b> <i>09-26-2000</i>	100.00	0.00	0.00	0.00	0.00	0.00
<b>One Year Ago</b> <i>02-29-2000</i>	100.00	0.00	0.00	0.00	0.00	0.00



***Intensity:***

- None
- D0 Abnormally Dry
- D1 Moderate Drought
- D2 Severe Drought
- D3 Extreme Drought
- D4 Exceptional Drought

*The Drought Monitor focuses on broad-scale conditions. Local conditions may vary. For more information on the Drought Monitor, go to <https://droughtmonitor.unl.edu/About.aspx>*

***Author:***

Brad Rippey  
 U.S. Department of Agriculture



**droughtmonitor.unl.edu**