

U.S. Drought Monitor

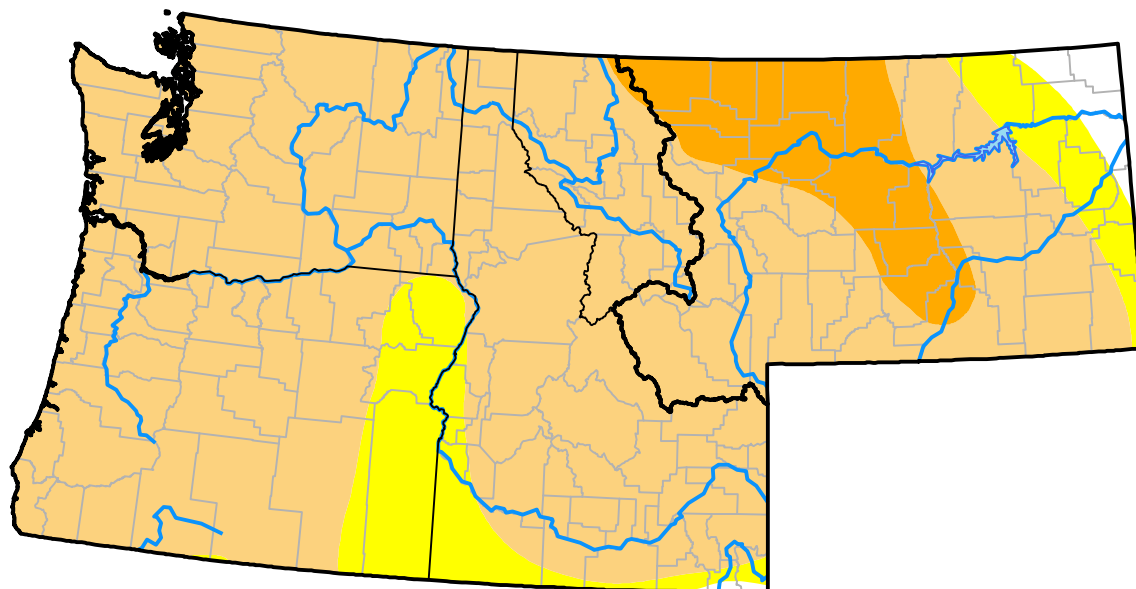
Pacific Northwest RDEWS

February 27, 2001
(Released Thursday, Mar. 1, 2001)

Valid 7 a.m. EST

Drought Conditions (Percent Area)

	None	D0	D1	D2	D3	D4
Current	0.18	11.18	88.46	0.18	0.00	0.00
Last Week <i>02-22-2001</i>	11.38	0.55	87.90	0.18	0.00	0.00
3 Months Ago <i>11-30-2000</i>	89.67	9.14	1.19	0.00	0.00	0.00
Start of Calendar Year <i>01-04-2001</i>	95.74	2.06	1.78	0.42	0.00	0.00
Start of Water Year <i>09-28-2000</i>	63.88	13.04	16.09	6.22	0.76	0.00
One Year Ago <i>03-02-2000</i>	100.00	0.00	0.00	0.00	0.00	0.00



Intensity:

- None
- D0 Abnormally Dry
- D1 Moderate Drought
- D2 Severe Drought
- D3 Extreme Drought
- D4 Exceptional Drought

The Drought Monitor focuses on broad-scale conditions. Local conditions may vary. For more information on the Drought Monitor, go to <https://droughtmonitor.unl.edu/About.aspx>

Author:

Brad Rippey
 U.S. Department of Agriculture



droughtmonitor.unl.edu