

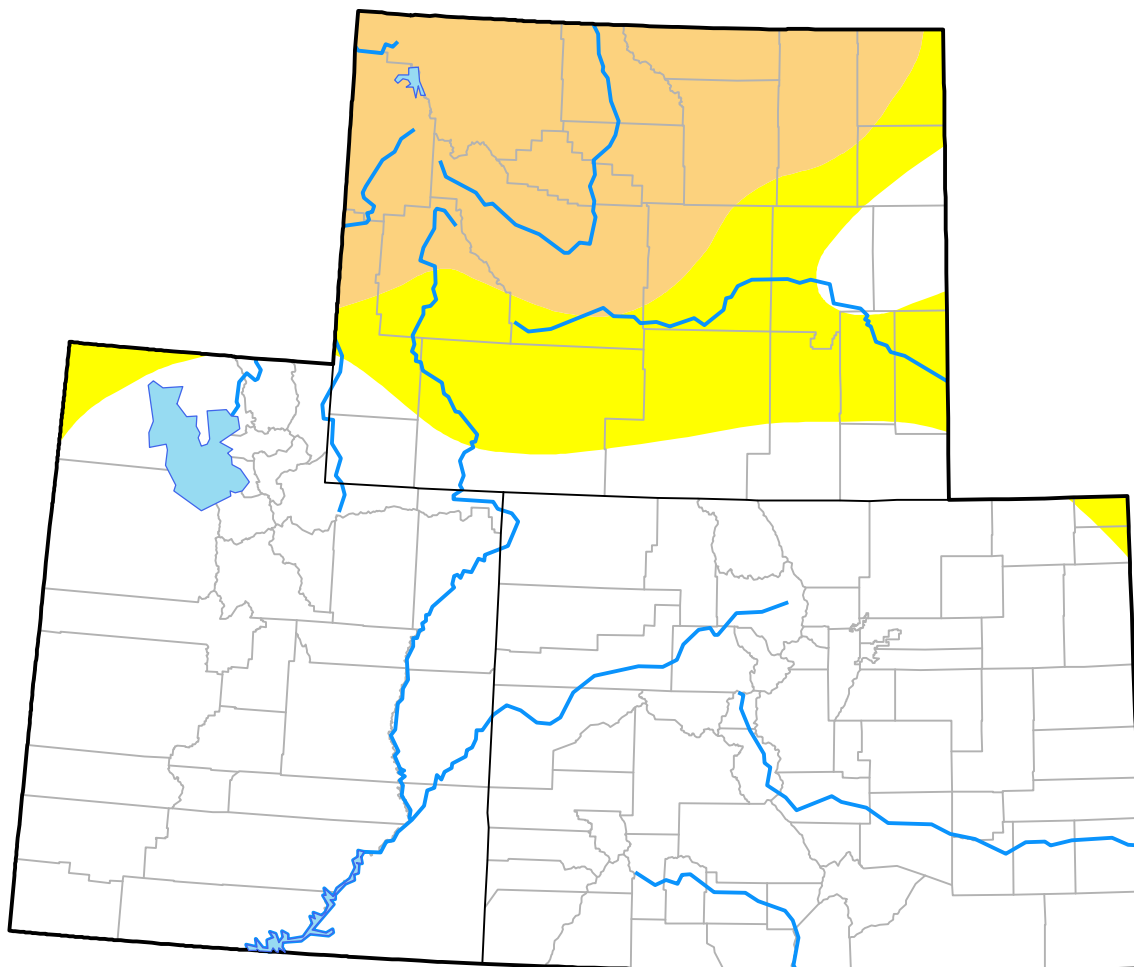
Upper Colorado River Basin RDEWS

(Released Thursday, Mar. 1, 2001)

Valid 7 a.m. EST

Drought Conditions (Percent Area)

	None	D0-D4	D1-D4	D2-D4	D3-D4	D4
Current	71.78	28.22	15.04	0.00	0.00	0.00
Last Week <i>02-22-2001</i>	72.56	27.44	14.35	0.00	0.00	0.00
3 Months Ago <i>11-30-2000</i>	55.89	44.11	0.91	0.00	0.00	0.00
Start of Calendar Year <i>01-04-2001</i>	78.54	21.46	0.00	0.00	0.00	0.00
Start of Water Year <i>09-28-2000</i>	10.69	89.31	40.37	2.20	0.00	0.00
One Year Ago <i>03-02-2000</i>	92.43	7.57	0.44	0.00	0.00	0.00



Intensity:

- None
- D0 Abnormally Dry
- D1 Moderate Drought
- D2 Severe Drought
- D3 Extreme Drought
- D4 Exceptional Drought

The Drought Monitor focuses on broad-scale conditions. Local conditions may vary. For more information on the Drought Monitor, go to <https://droughtmonitor.unl.edu/About.aspx>

Author:

Brad Rippey
U.S. Department of Agriculture

