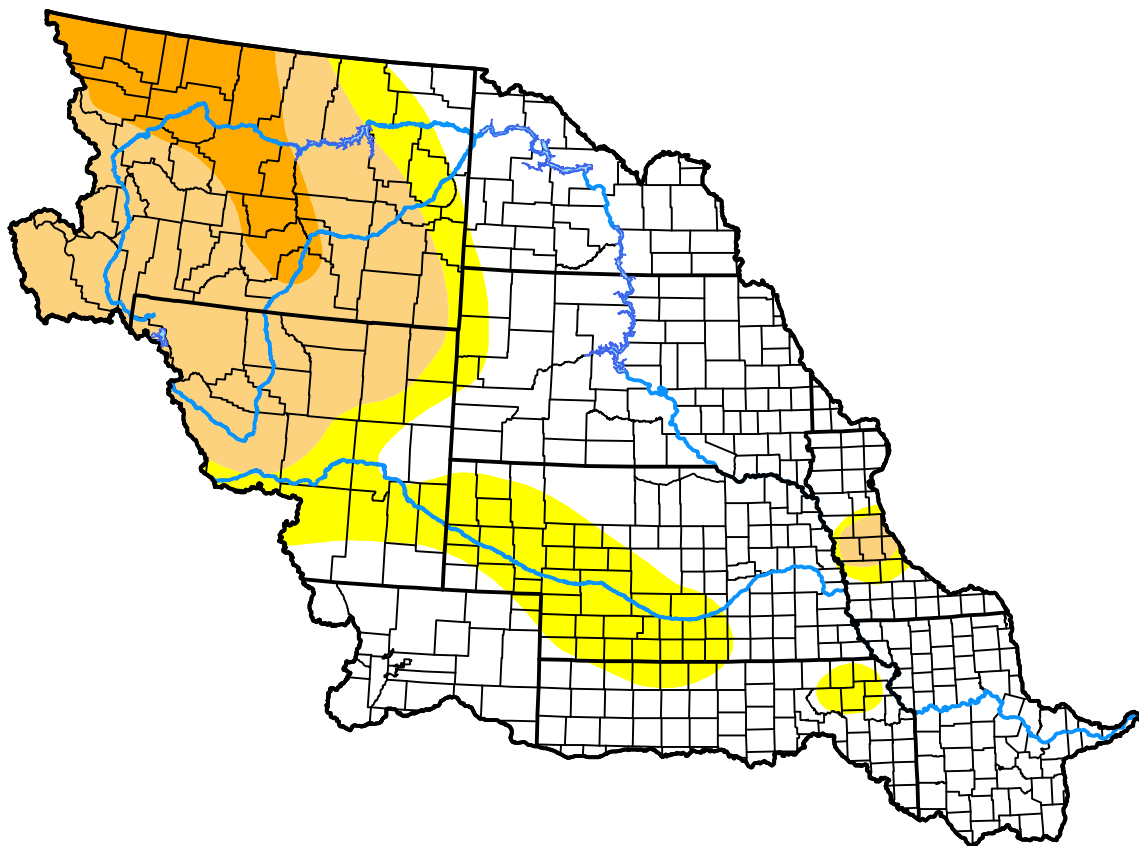


U.S. Drought Monitor

Missouri Basin RFC

February 27, 2001
 (Released Thursday, Mar. 1, 2001)
 Valid 7 a.m. EST



Drought Conditions (Percent Area)

	None	D0-D4	D1-D4	D2-D4	D3-D4	D4
Current	56.44	43.56	27.72	6.80	0.00	0.00
Last Week <i>02-22-2001</i>	52.30	47.70	28.13	6.80	0.00	0.00
3 Months Ago <i>11-30-2000</i>	39.20	60.80	23.76	8.80	0.47	0.00
Start of Calendar Year <i>01-04-2001</i>	48.37	51.63	21.38	9.55	0.45	0.00
Start of Water Year <i>09-28-2000</i>	22.94	77.06	42.06	28.36	2.95	0.00
One Year Ago <i>03-02-2000</i>	43.58	56.42	24.50	12.50	0.00	0.00

Intensity:

- None
- D0 Abnormally Dry
- D1 Moderate Drought
- D2 Severe Drought
- D3 Extreme Drought
- D4 Exceptional Drought

The Drought Monitor focuses on broad-scale conditions. Local conditions may vary. For more information on the Drought Monitor, go to <https://droughtmonitor.unl.edu/About.aspx>

Author:

Brad Rippey
 U.S. Department of Agriculture

