

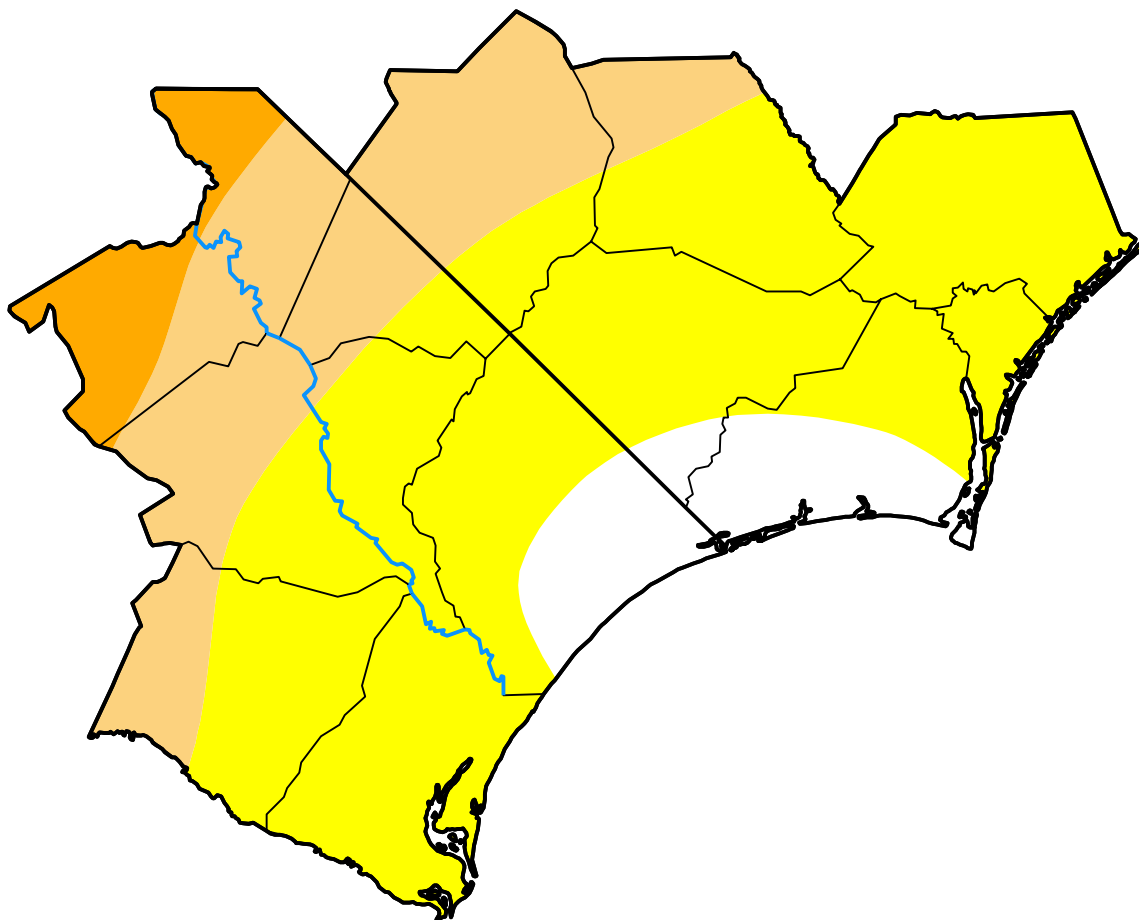
U.S. Drought Monitor Wilmington, NC WFO

February 27, 2001
(Released Thursday, Mar. 1, 2001)

Valid 7 a.m. EST

Drought Conditions (Percent Area)

	None	D0-D4	D1-D4	D2-D4	D3-D4	D4
Current	9.74	90.26	30.19	5.27	0.00	0.00
Last Week <i>02-22-2001</i>	2.38	97.62	30.19	0.39	0.00	0.00
3 Months Ago <i>11-30-2000</i>	53.39	46.61	0.95	0.00	0.00	0.00
Start of Calendar Year <i>01-04-2001</i>	89.15	10.85	0.00	0.00	0.00	0.00
Start of Water Year <i>09-28-2000</i>	100.00	0.00	0.00	0.00	0.00	0.00
One Year Ago <i>03-02-2000</i>	100.00	0.00	0.00	0.00	0.00	0.00



Intensity:

- None
- D0 Abnormally Dry
- D1 Moderate Drought
- D2 Severe Drought
- D3 Extreme Drought
- D4 Exceptional Drought

The Drought Monitor focuses on broad-scale conditions. Local conditions may vary. For more information on the Drought Monitor, go to <https://droughtmonitor.unl.edu/About.aspx>

Author:

Brad Rippey
U.S. Department of Agriculture

